

# Mercedes-Benz

## MODEL, CHASSIS ENGINE GUIDE 1946-2018

SEDAN COUPÉ CONVERTIBLE ROADSTER LIMOUSINE SUV 4WD

|                                      |  |                            |
|--------------------------------------|--|----------------------------|
| INTRODUCTION                         |  | 3                          |
| GENERAL INFORMATION                  |  | 4                          |
| CHASSIS AND ENGINE NUMBERING SYSTEMS |  | 5                          |
| CHASSIS CODES                        |  | 7                          |
| ENGINE CODES                         |  | 9                          |
| MODEL REFERENCE 1946-96              |  | 12                         |
| DETAILS                              |  |                            |
| Limousines                           | W100, W186, W188, W189   | 15                         |
| SL Roadsters                         | R/C107, W113, W121, R129, R170, W198, R/C190,<br>R/C197, C199, R230, R231  | 17                         |
| SLK Roadsters                        | R170, R171, R172   | 21                         |
| 1946-1955                            | W136, W187, W191   | 24                         |
| Ponton/Roundy                        | W105, W120, W121, W128, W180   | 25                         |
| Heckflosse/Finny                     | W110, W111, W112   | 27                         |
| S-Class                              | W108, W109, W116, W126, W140, W220, W221,<br>W222, C215, C216, C/A217      | 29                         |
| E-Class                              | W114, W115, W123, W124, W210, W21, W212, W213                              | 36                         |
| CLK/E Coupe                          | C/A207, C/A208, C/A209, C/A238   | 44                         |
| CLS                                  | C/X218, W219   | 46                         |
| C-Class                              | W201, W202, W203, W204, W205<br>Coupe/Cabriolet CL203, C204, C205          | 48                         |
| A-Class                              | W168, W169, W176, W177, CLA177   | 56                         |
| MPV                                  | B-Class W245, W246<br>R-Class W251   | 59<br>60                   |
| SUV                                  | GLA X156<br>GLK X204<br>GLC X/C253<br>ML W163, W164, W166<br>GL X164, X166 | 61<br>61<br>62<br>63<br>64 |
| G-Class                              | W460, W463, W461   | 66                         |

## INTRODUCTION

This guide is intended to cover all Mercedes-Benz passenger models whose production commenced in the period since the recommencement of passenger vehicle production in 1946. Data for vehicles produced since 1996 may not be complete, see note below.

### Conventions

Daimler publications have been used as the major reference in compiling this data for the period 1946 to 1996. The conventions used in those publications have been adopted here. Terminology etc. may therefore vary from other publications. The most recent publication has been accepted as the correct source.

**Errors** – If you find any please let me know.

### Chassis Codes 1946-96:

- The first three digits of the chassis code specify the general body style (i.e.W123). The next digit usually indicates engine fuel type, petrol (0) or Diesel (1). The next two digits indicate the specific version of the body style.
- Chassis codes quoted are for passenger vehicles only. Special bodies like ambulances, vans, long wheelbase etc. may have separate codes.

### Engine Code and power output 1946-96:

- The first digit of the engine code indicates engine fuel type, gasoline (1) or Diesel (6). The next two digits indicate the type. The last three digits indicate a specific version.
- Engine details provided are those quoted by Mercedes-Benz as the standard engine for the specified vehicle. Due to different fuel standards and exhaust emission requirements, power outputs of engines may vary between markets and may not be consistent within the same engine type and size.
- To convert horsepower into kilowatts multiply by 0.7457

### Production Dates

Frequently, Mercedes-Benz produced a limited number of pre volume production vehicles several months prior to commencing volume production. For some models this may have occurred in the previous year. Production dates and numbers quoted include pre volume production.

### Production Numbers:

- Production numbers quoted for some models may also include chassis only, special bodies (eg. ambulances) and special protection versions.

## UPDATE – VEHICLES FROM 1996

Photographs and data have been included for models produced since 1996. This data is shown in blue in the body of this document and has been sourced from internet sources like Wikipedia, parts catalogs etc. Where possible this has been verified to Daimler sources. However, this data may be incomplete or contain errors.

### Chassis Codes

The first three digits of the chassis code specify the general body style (i.e.W210). The information provided by the following digits changed over time. Some tables contain information as to the significance of the 4<sup>th</sup> digit

## GENERAL INFORMATION

### SOME LETTERS USED IN MODEL, CHASSIS AND ENGINE DESCRIPTIONS:

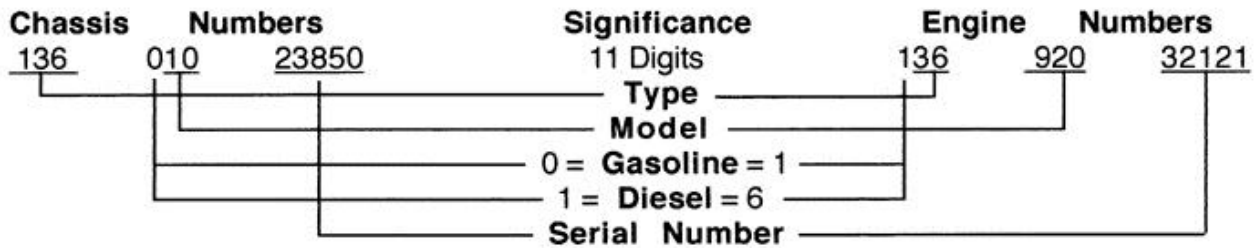
- A - (Cabriolet A) Designates a two door, two passenger cabriolet.
- A - Chassis code prefix for a cabriolet (eg. A124)
- A – Model name prefix for A-Class (eg. A200)
- AMG – High performance or racing version modified by AMG
- B – Model name prefix for B-Class (eg. B200)
- B – (Cabriolet B) Two doors with casual rear seat and separate rear quarter windows
- C - Chassis code prefix for a coupé (eg. C126)
- C – Model name prefix for C-Class (eg. C280)
- C – (Cabriolet C) Two doors with casual rear seat but no separate rear quarter windows
- CL– Model name prefix for CL-Class
- CLA– Model name prefix for CLA-Class
- CLC– Model name prefix for CLC-Class
- CLK– Model name prefix for CLK-Class
- CLS– Model name prefix for CLS-Class
- D - Indicates diesel powered (eg. 240D)
- D – (Cabriolet D) Four doors with full rear seat but no separate rear quarter windows
- E - *Einspritzer* indicates fuel injected engine
- E – Model name prefix for E-Class (eg. E280)
- F – (Cabriolet F) Four doors with full rear seat and separate rear quarter windows
- G - *Gelandewagen* four wheel drive off road vehicle
- GL- Model name prefix for GL-Class
- GLS– Model name prefix for GLS Class
- GLA- Model name prefix for GLA-Class
- GLK- Model name prefix for GLK CL-Class
- K - *Kurz* indicates short wheelbase (eg. SSK)
- K - *Kompressor* indicates supercharged engine
- L - *Licht* indicates light weight (eg.190SL)
- L - *Lang* indicates long wheelbase (eg. 560SEL)
- M – Engine code prefix for a petrol/gasoline engine
- ML – Model name prefix for ML-Class (eg. ML280)
- OM – Engine code prefix for diesel engine (ie. oil motor)
- R - Chassis code prefix for a roadster (eg. R107)
- R- Model name prefix for R-Class
- S – Model name prefix for S class (eg. S600)
- S - Chassis code prefix for a station wagon (eg. S124)
- S – Sport (eg. 300SL)
- S - Super (usually higher output version) (eg. 220S)
- S – Special (eg. 380SEC)
- SS - Super sport
- SL- Model name prefix for SL-Class
- SLK- Model name prefix for SLK-Class
- SLS- Model name prefix for SLS-Class
- T Touring and transport - model descriptor for a station wagon
- V - *Vorn* (front) used to indicate engine location on model name 170 (eg. 170V)
- W - *Wagen* Chassis code prefix for a four door passenger car or any other body style where a specific prefix is not used (eg. W198)
- X - Chassis code prefix for a sports utility vehicle (eg. X253)
- X - Model name prefix for X-Class pickup truck

Lower case (a, b, c, d) indicates different versions of the same general chassis (eg. 180a, 180b, 180c, versions of chassis W120)

4Matic - Chassis includes additional drive to the front wheels

# CHASSIS AND ENGINE NUMBERING SYSTEMS

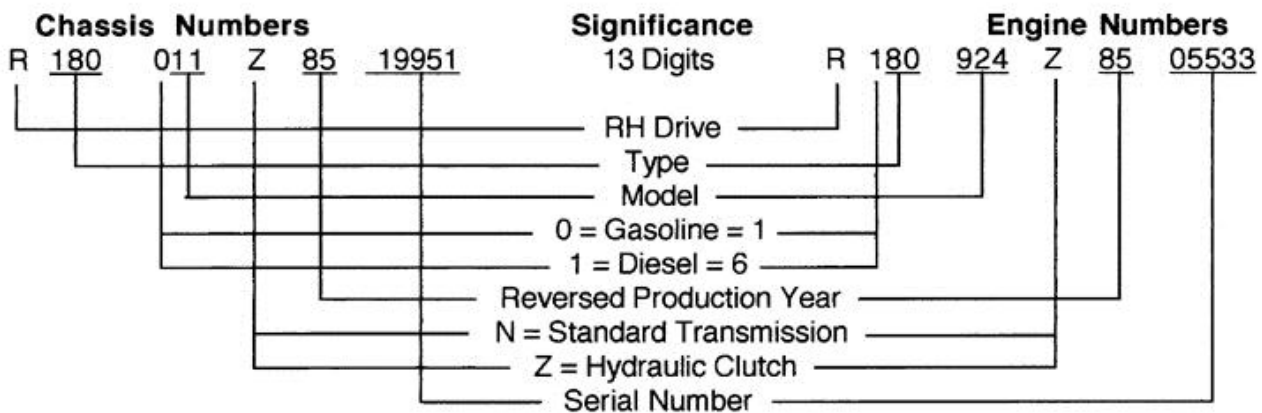
## 1946-1950



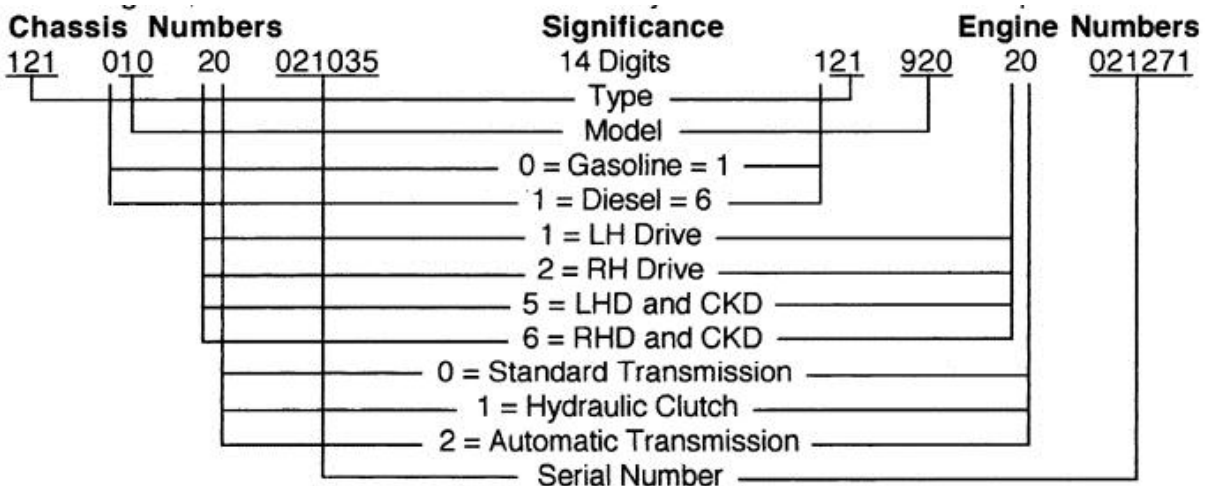
## 1951-1952



## 1953-1959



## 1960 THROUGH EARLY 1980S



## FROM THE EARLY 1980S

The National Highway Traffic Safety Administration in the United States established the fixed VIN system for vehicles with 17 digits.

Mercedes-Benz uses the American VIN numbering system for cars sold in the North American market and a modified form of the previous 14 digit system in other markets. This 14 digit system may also be called the FIN for "Fahrzeug Identifizierungsnummer"

## EXAMPLE OF THE TWO SYSTEMS:

A 2018 E400 4Matic coupe (body code 238.366) may have a VIN of WDD1J6GB7JF01235 if sold in North America and a VIN (FIN) of WDD2383661F012345 if sold elsewhere

### **WDD2383661F012345**

WDD is the World Manufacturer Identification code:

W is Germany

D is Daimler AG

D is Daimler, B is Daimler-Benz and C is DaimlerChrysler

238.366 = Model designator (C238 E-Class, E400 4matic)

1 = left side steering 2 = right side steering

F = Factory code A-E Sindelfingen, F-H Bremen etc

012345 = serial number

### **WDD1J6GB7JF01235**

WDD is the World Manufacturer Identification code as above

Character 4: Series Indicator

Character 5: Body Style, J = Coupe

Characters 6-7: Model

Character 8: Safety Restraint System

Character 9: Check Digit used to algorithmically validate the entire VIN

Character 10: Model Year

Character 11: Production Plant (F is Bremen)

012345 = serial number

---

## ENGINE MODEL DESCRIPTORS

Example: OM 668 DE 17 LA red.

OM = Oelmotor (diesel engine), M = (Gasoline engine)

668 = engine series

DE = Direkteinspritzung (common rail injection)

17 = approximate Displacement in decilitres

A = Abgasturbolader (turbocharger)

L = Ladeluftkühler (intercooler)

red. = reduced power

(Not confirmed to Daimler sources)

---

## PART NUMBERING

**Standard part numbers** are two groups of 6 digits. DIN standard parts start with a zero and M-B internal standard parts start with a 9.

**Specific part numbers** are four groups of digits AAA BBC DD EE

eg. 116 678 01 10

116 - chassis type, engine type (W116)

67 - group (windows).

8 - sub-group (rear)

01 - version or modification (tinted, heat absorbing)

10 - actual part identification (glass)

## CHASSIS CODES

| Code        | General Description   |
|-------------|---|
| W100        | 600 4-door limousine, 4 and 6-door pullman and Landauet 1963-81         |
| W105        | 219 sedan (Ponton/roundie) 1956-59                                      |
| R/C 107     | 280 to 560 SL roadster and SLC coupé, 1970-1989                         |
| W108        | S-Class sedan 250S to 300SEb 1965-1972                                  |
| W109        | S-Class sedan 300 SEL series 1965-1972                                  |
| W110        | 190,190D, 200, 200D, 230 sedan (Heckflosse/finny) 1961-1968             |
| W111        | 220 to 280SE 3.5 sedan, coupé, convertible (Heckflosse/finny) 1959-1971 |
| W112        | 300SE sedan, coupé and convertible (Heckflosse/finny) 1961-1967         |
| W113        | 230, 250, 280 SL roadster (Pagoda) 1963-1971                            |
| W114        | 230 to 280 sedan and coupé 6-cylinder (/8, Strichacht) 1968-1976        |
| W115        | 200 to 240D sedan 4- and 5-cylinder (/8, Strichacht) 1968-1976          |
| W116        | S-Class sedan 280S to 450SEL 6.9, 1972-1980                             |
| C/X 117     | CLA 4 door coupé and shooting brake 2013-                               |
| W120        | 180 series sedan (Ponton/roundie) 1953-1962                             |
| W121        | 190SL roadster, 1955-1963   |
| W121        | 190 series sedan (Ponton/roundie) 1956-1961                             |
| W/S/C 123   | E-Class sedan, station wagon, coupé 1975-1986                           |
| W/S/C/A 124 | E-Class sedan, coupé, station wagon and convertible 1984-1997           |
| W/C 126     | S-Class sedan and coupé 260SE to 560SEC 1979-1992                       |
| W128        | 220SE sedan, convertible and coupé (Ponton/roundie) 1958-1960           |
| R129        | 280 to 600 SL roadster 1988-2001  |
| W136        | 170V, 170S 170D and variations 1946-1955                                |
| W/C 140     | S-Class sedan and coupé S280 to CL600 1991-1998                         |
| X156        | GLA-Class SUV 2014-   |
| W163        | ML-Class SUV 1997-2005  |
| W164        | ML-Class SUV 2005-2011  |
| X164        | GL-Class SUV 2006-2012  |
| W166        | ML and GLE-Class SUV 2011-  |
| X166        | GL-Class SUV 2012-  |
| W168        | A-Class 1997-2005 updated in 2001                                       |
| W169        | A-Class 2004-2012 updated in 2008                                       |
| R170        | SLK roadster 1996-2005  |
| R171        | SLK roadster 2005-2011  |
| R172        | SLK roadster 2011-  |
| W176        | A-Class 2012-2018   |
| W177        | A-Class 2018-   |
| W180        | 220a and 220S sedan convertible and coupé (Ponton/roundie) 1954-1959    |
| W186        | 300, 300b, 300c (Adenauer) 1951-1957                                    |
| W187        | 220 sedan, convertible and coupé 1951-1955                              |
| W188        | 300S and Sc coupé convertible and roadster 1951-1958                    |
| W189        | 300d (Adenauer)1957-1962  |
| C/R 190     | AMG GT coupé and roadster 2014-   |
| W191        | 170Sb, 170D-S 1952-1953   |
| C/R 197     | SLS AMG coupé and roadster 2009-2014                                    |
| W198        | 300SL roadster and coupé; (Flügeltürer/Gullwing) 1954-1963              |
| C/R/Z 199   | SLR roadster, coupé and speedster 2003-2009                             |
| W201        | 190 series sedan (C-Class) 1982-1993                                    |
| W/S 202     | C-Class sedan and station wagon 1992-2001                               |
| W/S 203     | C-Class sedan and station wagon 2000-2007                               |
| CL203       | CLC coupé 2001-2011   |
| W/S/C 204   | C-Class sedan, station wagon and coupé 2007-2015                        |
| X204        | GLK-Class SUV 2009-   |
| W/S/C/A 205 | C-Class sedan, station wagon, coupé and convertible 2014-               |
| C/A 207     | E-Class coupé and convertible 2009-2017                                 |

|         |   |
|---------|---|
| C/A 208 | CLK coupé and convertible 1997-2003           |
| C/A 209 | CLK coupé and convertible 2002-2010           |
| W/S 210 | E-Class sedan and station wagon 1995-2002     |
| W/S 211 | E-Class sedan and station wagon 2002-2009     |
| W/S 212 | E-Class sedan and station wagon 2009-2016-    |
| W/S 213 | E-Class sedan and station wagon 2016-         |
| C215    | S-Class coupé 1999-2006                       |
| C216    | S-Class coupé 2006-2014                       |
| C/A 217 | S-Class coupé and convertible 2014-           |
| C/X 218 | CLS 4 door coupé and shooting break 2010-2018 |
| C219    | CLS 4 door coupé 2004-2010                    |
| W220    | S-Class sedan 1998-2005                       |
| W221    | S-Class sedan 2005-2013                       |
| W222    | S-Class sedan 2013-                           |
| R230    | SL roadster 2001 to 2011                      |
| R231    | SL roadster 2012-                             |
| C/A 238 | E-Class coupé and convertible 2017-           |
| W245    | B-Class SUV 2005-2011                         |
| W246    | B-Class SUV 2011-2018                         |
| W247    | B-Class SUV 2018-                             |
| W251    | R-Class SUV 2005-17                           |
| X/C 253 | GLC-Class SUV 2015-                           |
| C257    | CLS 4 door coupé 2018-                        |
| C292    | GLE coupé 2015-                               |
| W460    | G-Class Geländewagen 1979-1990                |
| W461    | G-Class Geländewagen 1990-                    |
| W463    | G-Class Geländewagen 1990-                    |

Note:

Date range covers commencement and cessation of production of all vehicles in the chassis code. Therefore:  
Sedans and station wagons may have ceased production before coupés and convertibles  
Sales may have continued after production ceased.



## ENGINE CODES

### GASOLINE - STRAIGHT 4 CYLINDER

| CODE            | DISPLACEMENT   | DESCRIPTION   | POWER      | PRODUCTION |
|-----------------|--|---|------------|------------|
| <b>M102</b>     | 1,797 cc, 1,997 cc,<br>2,299 cc, 2,463 cc,<br>2,498 cc | SOHC 2 valves and DOHC 4 valves. 175<br>CDT Carburetor, Multi-point fuel injection -<br>Bosch KE-Jetronic |            | 1979-96    |
| <b>M111</b>     | 1,799 cc, 1,998 cc,<br>2,199 cc, 2,295 cc              | DOHC 4 valves, Fuel Injection Siemens<br>PEC/PMS, Some supercharged                                       |            | 1992-03    |
| <b>M115</b>     | 1,988 cc, 2,277 cc,<br>2,307 cc                        | Carburettor   | 63–89 kW   | 1967-85    |
| <b>M121</b>     | 1,897 cc, 1,988 cc                                     | SOHC 2 valves Twin parallel Solex 38PDSJ<br>carburetors.  | 56–82 kW   | 1953-68    |
| <b>M133</b>     | 1991cc   | DOHC Direct injection, single twin scroll turbo   | 265–280 kW | 2013-      |
| <b>M136</b>     | 1,697 cc ,1,767 cc                                     | Side valve, Solex carburetor  |            | 1935-55    |
| <b>M166</b>     | 1,397 cc, 1,598 cc,<br>1,898 cc, 2,084 cc              | SOHC 2 Valves, Multipoint fuel injection  | 60-103kW   | 1997-05    |
| <b>M200</b>     | 1,192 cc   | DOHC 4 valves, Direct injection, single turbo   | 84kW       | 2012-      |
| <b>M260/264</b> | 1,497 cc, 1,991 cc                                     | DOHC 4 valves, Direct injection, single twin<br>scroll turbo  | 135–220 kW | 2017-      |
| <b>M266</b>     | 1498cc, 1699cc,<br>2034cc                              | SOHC 8 valve, M266.980 turbocharged   |            | 2004-      |
| <b>M270</b>     | 1,595 cc, 1,991 cc                                     | DOHC 4 valves, Direct injection, single turbo   | 75–180 kW  | 2011-      |
| <b>M271</b>     | 1,597 cc, 1,796 cc                                     | DOHC 4 valves, Injection, supercharger or<br>turbocharger   | 90–150 kW  | 2002-15    |
| <b>M270/274</b> | 1,595 cc, 1,991 cc                                     | DOHC 4 valves, Direct injection, single turbo   | 75–180 kW  | 2012-      |
| <b>M282</b>     | 1332cc   | DOHC, Direct injection, single turbo  | 80–120 kW  | 2018-      |

### GASOLINE - STRAIGHT 6 CYLINDER

| CODE        | DISPLACEMENT       | DESCRIPTION  | POWER       | PRODUCTION |
|-------------|--------------------|--|-------------|------------|
| <b>M103</b> | 2,597 cc, 2,960 cc | SOHC 2 Valves, Continuous injection                                    | 118–140 kW  | 1984-97    |
| <b>M104</b> | 2,799 cc, 2,960 cc | DOHC 4valves, Bosch KE-Jetronic and Bosch<br>Motronic EFI              | 142–206 kW; | 1993-99    |
| <b>M108</b> | 2497cc             | SOHC, Two 2-bbl Zenith 35/40   | 96kW        | 1965-69    |
| <b>M110</b> | 2746cc             | DOHC 2 valve Solex 4A1 carburetor and Bosch<br>Jetronic Fuel injection | 105-136kW   | 1972-86    |
| <b>M114</b> | 2497cc             | 2x Zenith 35/40 INAT carburetors                                       | 97kW        | 1967-72    |
| <b>M123</b> | 2,525 cc           | SOHC, Solex 4A1 carburetor   | 95-104kW    | 1976-84    |
| <b>M127</b> | 2196cc 2307cc      | SOHC 2 valves, Bosch mechanical fuel injection                         | 84-100 kW   | 1958-67    |
| <b>M129</b> | 2,496 cc           | SOHC 2 valve, Carburetor and mechanical fuel<br>injection              |             | 1965-68    |
| <b>M130</b> | 2788cc             | SOHC 2 valve, Carburetor and mechanical fuel<br>injection              |             |            |
| <b>M180</b> | 2196cc             | SOHC 2 valves, Solex carburetors                                       |             | 1951-80    |
| <b>M186</b> | 2996cc             | SOHC 2 valves, Solex carburetors                                       | 86kW        | 1951-67    |
| <b>M188</b> | 2996cc             | SOHC 2 valves, Solex carburetors                                       | 112kW       | 1952-55    |
| <b>M189</b> | 2996cc             | SOHC 2 valves, Solex carburetors and Bosch<br>direct fuel injection    | 127-132kW   | 1957-67    |
| <b>M198</b> | 2996cc             | SOHC 2 valves, Bosch mechanical fuel injection                         | 158kW       | 1954-63    |
| <b>M199</b> | 2996cc             | SOHC 2 valves, Bosch mechanical fuel injection                         | 130kW       | 1955-58    |
| <b>M256</b> | 2999cc             | DOHC 4 valves, Direct injection Turbo                                  | 270-320kW   | 2017-      |

### GASOLINE - V6 CYLINDER

| CODE        | DISPLACEMENT  | DESCRIPTION  | POWER      | PRODUCTION |
|-------------|---|--|------------|------------|
| <b>M112</b> | 2,398 cc, 2,597 cc,<br>2,799 cc, 3,199 cc, 3,724 cc | SOHC 3 valves, sequential fuel injection,<br>IHI Supercharger on C32 | 125–260 kW | 1997-2011  |
| <b>M272</b> | 2,496 cc, 2,996 cc, 3,498 cc                        | DOHC 4 valves with continuous VVT,<br>Direct injection               | 150–225 kW | 2004-      |
| <b>M276</b> | 2996cc, 3499cc                                      | DOHC 4 valves with continuous VVT,<br>Direct injection, some Biturbo | 188-245kW  | 2011-      |

**GASOLINE – V8 CYLINDER**

| CODE        | DISPLACEMENT                  | DESCRIPTION   | POWER      | PRODUCTION |
|-------------|-------------------------------|---|------------|------------|
| <b>M100</b> | 6,332 cc, 6,834 cc            | SOHC Daimler-Benz mechanical fuel injection and Bosch K-jetronic                    | 180-210 kW | 1963-81    |
| <b>M113</b> | 4,266 cc, 4,966 cc, 5,439 cc  | SOHC 3 valves, sequential fuel injection, AMG supercharger                          | 208-478 kW | 1998-2007  |
| <b>M116</b> | 3,499 cc, 3,818 cc, 4,196 cc  | SOHC 2 valves, Bosch Jetronic fuel injection  | 116-170kW  | 1969-91    |
| <b>M117</b> | 4520cc, 4973cc, 5547cc        | SOHC 2 valves, Bosch Jetronic fuel injection  |            | 1971-92    |
| <b>M119</b> | 4,196 cc, 4,973 cc, 5,956 cc, | DOHC 4 valves, VVT, Fuel injection, turbocharged in racing versions                 | 200–305 kW | 1989-99    |
| <b>M152</b> | 5461cc                        | DOHC 4 valves twin turbo fuel injection   | 310kW      | 2012-15    |
| <b>M155</b> | 5439cc                        | Version of the supercharged M113 for the SLR  | 460-478kW  | 2006-14    |
| <b>M156</b> | 6208cc                        | DOHC 4 valves fuel injection  | 336–386kW  | 2006-14    |
| <b>M157</b> | 5,461 cc                      | DOHC 4 valves   | 386-430kW  | 2010-      |
| <b>M159</b> | 6208cc                        | Version of M156 used in SLS-AMG   | 420-464kW  | 2010-15    |
| <b>M176</b> | 3982cc                        | DOHC 4 valves, fuel injection, twin BorgWarner turbochargers between cylinder heads | 310-345kW  | 2015-      |
| <b>M177</b> | 3982cc                        | AMG version of M176   | 350-450kW  | 2015-      |
| <b>M178</b> | 3982cc                        | AMG version of M176, 2 twin scroll turbochargers                                    | 340-478kW  | 2015-      |
| <b>M273</b> | 4,663 cc, 5,461 cc            | DOHC 4 valves, VVT, sequential fuel injection                                       | 250-285kW  | 2006-      |
| <b>M278</b> | 4,663 cc                      | DOHC 4 valves, VVT, twin turbo  | 320-335kW  | 2010-      |

**GASOLINE – V12 CYLINDER**

| CODE        | DISPLACEMENT       | DESCRIPTION                                    | POWER      | PRODUCTION |
|-------------|--------------------|--|------------|------------|
| <b>M120</b> | 5,987 cc, 7,291 cc | DOHC 4 valves, sequential fuel injection       | 290–588 kW | 1991-98    |
| <b>M137</b> | 5.8 litres         | SOHC 3 valve, fuel injection                   | 270kW      | 1998-2002  |
| <b>M158</b> | 5980cc             | M275 built by AMG for Pagani                   | 537-588kW  | 2012-      |
| <b>M275</b> | 5513cc, 5980cc     | SOHC 3 valve, Bosch fuel injection, twin turbo | 380-493kW  | 2004-15    |
| <b>M277</b> | 5980cc             | SOHC 3 valve, Bosch fuel injection, twin turbo | 390kW      | 2014-      |
| <b>M279</b> | 5980cc             | SOHC 3 valve, Bosch fuel injection, twin turbo | 463kW      | 2012-      |
| <b>M285</b> | 5513cc             | M275 built for Maybach                         | 410kW      | 2003-12    |
| <b>M297</b> | 6,898 cc, 7,291 cc | DOHC 4 valves, multi point fuel injection      | 386-559kW  | 1997-2016  |

**DIESEL - STRAIGHT 3 CYLINDER**

| CODE         | DISPLACEMENT | DESCRIPTION  | POWER   | PRODUCTION |
|--------------|--------------|--|---------|------------|
| <b>OM639</b> | 1493cc       | DOHC , turbo, common rail direct injection         | 50-70kW | 2004-09    |
| <b>OM660</b> | 799cc        | SOHC 2 valves, turbo, common rail direct injection | 30-40kW | 1998-2015  |

**DIESEL - STRAIGHT 4 CYLINDER**

| CODE         | DISPLACEMENT                 | DESCRIPTION  | POWER     | PRODUCTION |
|--------------|------------------------------|--|-----------|------------|
| <b>OM601</b> | 1,997 cc, 2,197 cc, 2,299 cc | SOHC indirect injection  | 54–72 kW  | 1983-2001  |
| <b>OM604</b> | 1997cc, 2155cc               | DOHC 4 valves, Lucas indirect injection                        | 55-70kW   | 1993-98    |
| <b>OM608</b> | 1461cc                       | SOHC Common rail injection, turbocharged                       | 85kW      | 2018-      |
| <b>OM611</b> | 2148cc, 2151cc               | DOHC 4 valves, common rail direct injection                    | 60-105kW  | 1998-2011  |
| <b>OM615</b> | 1,988 cc, 2,197 cc           | SOHC indirect injection  | 41-45kW   | 1968-85    |
| <b>OM616</b> | 2,399 cc, 2,404 cc           | SOHC indirect injection  | 48–63 kW  | 1973-85    |
| <b>OM621</b> | 1,897 cc, 1,988 cc, 2,197 cc | SOHC indirect injection  | 35-40kW   | 1956-68    |
| <b>OM636</b> | 1,697 cc, 1,767 cc           | OHV, Precombustion Chamber Injection                           | 28-32kW   | 1949-90    |
| <b>OM640</b> | 1991cc                       | DOHC, common rail injection, single turbocharger               |           | 2004-      |
| <b>OM646</b> | 2148cc                       | DOHC, common rail injection, single turbocharger               | 65-125kW  | 2002-10    |
| <b>OM651</b> | 2,143 cc                     | DOHC, common rail injection, single turbo or twin turbo        | 100-150kW | 2008-      |
| <b>OM654</b> | 1950cc                       | DOHC, common rail injection, single turbocharger               | 143-180kW | 2016-      |
| <b>OM668</b> | 1689cc                       | DOHC, common rail injection, single turbocharger               | 44-70kW   | 1997-      |
| <b>OM699</b> | 2298cc                       | DOHC, common rail direct injection, single turbo or twin turbo | 120-140kW | 2015-      |

**DIESEL - STRAIGHT 5 CYLINDER**

| CODE         | DISPLACEMENT       | DESCRIPTION   | POWER     | PRODUCTION |
|--------------|--------------------|---|-----------|------------|
| <b>OM602</b> | 2,497 cc, 2,874 cc | SOHC 2 valve, indirect or direct Bosch injection, some turbocharged | 66-95kW   | 1985-2002  |
| <b>OM605</b> | 2497cc             | DOHC 4 valve, Bosch direct injection, turbo                         | 83-110kW  | 1993-2001  |
| <b>OM612</b> | 2685cc             | DOHC 4 valve, common rail direct injection, turbo                   | 115-125kW | 1999-2006  |
| <b>OM617</b> | 2,998 cc, 3,005 cc | SOHC Bosch indirect injection, OM617A turbocharged                  | 59-169kW  | 1974-91    |
| <b>OM647</b> | 2687cc             | DOHC 4 valve, common rail direct injection, turbo                   |           | 2002-06    |

**DIESEL - STRAIGHT 6 CYLINDER**

| CODE         | DISPLACEMENT     | DESCRIPTION   | POWER     | PRODUCTION |
|--------------|------------------|---|-----------|------------|
| <b>OM603</b> | 2996 cc, 3449 cc | SOHC 2 valve, Bosch prechamber injected, some turbocharged            | 81-111kW  | 1986-97    |
| <b>OM606</b> | 2996cc           | DOHC 4 valves, indirect injection, some turbo                         | 100-130kW | 1993-2001  |
| <b>OM613</b> | 3222cc           | DOHC, common rail direct injection, turbocharged                      | 145kW     | 1999-2003  |
| <b>OM648</b> | 3222cc           | DOHC 4 valves, common rail direct injection, single turbocharged      | 150kW     | 2002-05    |
| <b>OM656</b> | 2925cc           | DOHC 4 valves, VVT, common rail direct injection, single turbocharged | 210-250kW | 2017-      |

**DIESEL - V6 CYLINDER**

| CODE         | DISPLACEMENT | DESCRIPTION  | POWER     | PRODUCTION |
|--------------|--------------|--|-----------|------------|
| <b>OM642</b> | 2987cc       | DOHC 4 valves, common rail direct injection, variable nozzle Garrett turbo | 140-195kW | 2005-      |

Note: Power outputs will vary between markets

## MODEL REFERENCE 1946-96

| Model name   | Chassis period |
|--|----------------|
| <b>170</b>   |                |
| 170V 170Va 170Vb 170S 170S-V 170D 170Da 170Db 170S-D     | W136 (46-55)   |
| 170Sb 170D-S   | W191 (52-53)   |
| <b>180</b>   |                |
| 180 180a 180b 180c 180D 180Db 180Dc                      | W120 (53-62)   |
| C180 C180T   | W202 (92-00)   |
| <b>190</b>   |                |
| 190SL  | W121 (55-63)   |
| 190 190b 190D 190Db                                      | W121 (56-61)   |
| 190c 190Dc   | W110 (61-68)   |
| 190 190E 190E2.3 190E2.3-16 190E2.5 190E2.5-16 190E2.6   |                |
| 190E1.8 190D 2.2 190D 2.5 190D 2.5 Turbo                 | W201 (82-93)   |
| <b>200</b>   |                |
| 200 200D   | W110 (61-68)   |
| 200 200D 200T  | W123 (75-86)   |
| 200 200D   | W115 (68-76)   |
| 200GE  | W460 (79-92)   |
| 200 200E E200 200D E200D 200CE 200T 200TE 200TD          | W124 (84-97)   |
| C200 C200 Compressor C200 Diesel C200T C200 T Compressor |                |
| 200GE/G200   | W463 (90-)     |
| C200T Diesel   | W202 (92-00)   |
| SLK 200 SLK 200 Compressor                               | R170 (96-)     |
| <b>219</b>   |                |
| 219  | W105 (56-59)   |
| <b>220</b>   |                |
| 220  | W187 (51-55)   |
| 220a 220S  | W180 (54-59)   |
| 220SE  | W128 (58-60)   |
| 220b 220Sb 220SEb  | W111 (59-71)   |
| 220 220D   | W115 (68-76)   |
| 220D   | W123 (75-86)   |
| 220E E220 220TE E220T 220CE E220 C                       | W124 (84-97)   |
| C220 C220T C220 Diesel C220 Diesel T                     | W202 (92-00)   |
| <b>230</b>   |                |
| 230S   | W111 (59-71)   |
| 230  | W110 (61-68)   |
| 230SL  | W113 (63-71)   |
| 230  | W114 (68-76)   |
| 230  | W115 (68-76)   |
| 230 230E 230C 230CE 230T 230TE                           | W123 (75-86)   |
| 230G 230GE   | W460 (79-92)   |
| 230E 230CE 230TE   | W124 (84-97)   |
| 230GE/G230   | W463 (90-)     |
| 230GE  | W461 (91-96)   |
| C230 C230 Compressor C230T C230T Compressor              | W202 (92-00)   |
| E230 E230T   | W210 (95-)     |
| SLK 230 Compressor                                       | R170 (96-)     |
| <b>240</b>   |                |
| 240D 240D3.0   | W115 (68-76)   |
| 240D 240TD   | W123 (75-86)   |
| 240GD  | W460 (79-92)   |
| C240 C240T   | W202 (92-00)   |

**Model name****Chassis period****250**

|  |              |
|--|--------------|
| 250SE  | W111 (59-71) |
| 250SL  | W113 (63-71) |
| 250S 250SE                                     | W108 (65-72) |
| 250 250E 2502.8 250C2.8                        | W114 (68-76) |
| 250 250T                                       | W123 (75-86) |
| 250D E250D E250 Turbodiesel 250TD E250 DieselT |              |
| 250GD  | W460 (79-92) |
| E250 Turbodiesel T                             | W124 (84-97) |
| 250GD  | W463 (90-)   |
| C250D  | W202 (92-00) |

**260**

|                  |              |
|------------------|--------------|
| 260SE            | W126 (79-91) |
| 260E 260E 4Matic | W124 (84-97) |

**280**

|  |              |
|--|--------------|
| 280SE 280SE 3.5  | W111 (59-71) |
| 280SL  | W113 (63-71) |
| 280S 280SE 280SE3.5 280SE 4.5 280SEL 280SEL 3.5 280SEL 4.5 | W108 (65-72) |
| 280 280C 280E 280CE  | W114 (68-76) |
| 280SL 280SLC   | R107 (70-89) |
| 280S 280SE 280SEL  | W116 (72-80) |
| 280 280C 280E 280CE 280TE                                  | W123 (75-86) |
| 280S 280SE 280SEL  | W126 (79-92) |
| 280GE  | W460 (79-92) |
| SL280  | R129 (88-01) |
| 280E E280 280TE E280T                                      | W124 (84-97) |
| 280SE/S280   | W140 (91-98) |
| C280 C280T   | W202 (92-00) |

**290**

|                         |              |
|-------------------------|--------------|
| 290GD 290GD Turbodiesel | W461 (91-96) |
|-------------------------|--------------|

**300**

|   |              |
|---|--------------|
| 300 300b 300c   | W186 (51-56) |
| 300S 300Sc  | W188 (51-58) |
| 300SL   | W198 (54-63) |
| 300d  | W189 (57-62) |
| 300SE 300SEL  | W112 (61-67) |
| 300SEb  | W108 (65-72) |
| 300SEL 300SEL 3.5 300SEL 4.5 300SEL 6.3               | W109 (65-72) |
| 300SL   | R107 (70-89) |
| 300SD   | W116 (72-80) |
| 300D 300CD 300TD 300D Turbo 300CD Turbo 300TD Turbo   | W123 (75-86) |
| 300E 300E2.6 300E2.8 300CE 300TE 300D 300D2.5 300SD   |              |
| 300SDL 300SE 300SEL                                   | W126 (79-92) |
| 300GD   | W460 (79-92) |
| 300E E300 4Matic 300E-24 300D E300 Diesel 300D 4Matic |              |
| E300 turbodiesel 300CE 300CE-24 300TE E300T 4Matic    |              |
| 300TE-24 300TD E300 Turbodiesel 4Matic                | W124 (84-97) |
| 300SL 300SL-24  | R129 (88-01) |
| 300GE/G300 300GD/G300 turbodiesel                     | W463 (90-)   |
| 300SE 300SD S300 Turbodiesel                          | W140 (91-98) |
| E300D E300 Turbo                                      | W210 (95-)   |

| <b>Model name</b>                          | <b>Chassis period</b> |
|--|-----------------------|
| <b>320</b>                                 |                       |
| 320E E320 320CE E320 Coupe 320TE E320T     | W124 (84-97)          |
| SL320                                      | R129 (88-01)          |
| G320                                       | W463 (90-)            |
| S320 S320L                                 | W140 (91-98)          |
| E320 E320T                                 | W210 (95-)            |
| <b>350</b>                                 |                       |
| 350SL 350SLC                               | R107 (70-89)          |
| 350SE 350SEL                               | W116 (72-80)          |
| 350SD 350SDL                               | W126 (79-92)          |
| 350GD/G350 turbodiesel                     | W463 (90-)            |
| S350 Turbodiesel                           | W140 (91-98)          |
| <b>360</b>                                 |                       |
| C36 AMG                                    | W202 (92-00)          |
| E36 AMG                                    | W210 (95-)            |
| <b>380</b>                                 |                       |
| 380SL 380SLC                               | R107 (70-89)          |
| 380SE 380SEL 380SEC                        | W126 (79-92)          |
| <b>400</b>                                 |                       |
| 400E                                       | W124 (84-97)          |
| 400SE 400SEL                               | W140 (91-98)          |
| <b>420</b>                                 |                       |
| 420SL                                      | R107 (70-89)          |
| 420SE 420SEL 420SEC                        | W126 (79-92)          |
| E420                                       | W124 (84-97)          |
| S420 S420L SC420 CL420                     | W140 (91-98)          |
| E420                                       | W210 (95-)            |
| <b>430</b>                                 |                       |
| C43 AMG C43T AMG                           | W202 (92-00)          |
| <b>450</b>                                 |                       |
| 450SL 450SLC 450SLC 5.0                    | R107 (70-89)          |
| 450SE 450SEL 450SEL 6.9                    | W116 (72-80)          |
| <b>500</b>                                 |                       |
| 500SL 500SLC                               | R107 (70-89)          |
| 500SE 500SEL 500SEC                        | W126 (79-92)          |
| 500E E500                                  | W124 (84-97)          |
| 500SL/SL500                                | R129 (88-01)          |
| 500GE                                      | W463 (90-)            |
| 500SE 500SEL 500SEC S500 S500L SC500 CL500 | W140 (91-98)          |
| <b>550</b>                                 |                       |
| C55 AMG C55T AMG                           | W202 (92-00)          |
| <b>560</b>                                 |                       |
| 560SL 560SLC                               | R107 (70-89)          |
| 560SE 560SEL 560SEC                        | W126 (79-92)          |
| <b>600</b>                                 |                       |
| 600  | W100 (63-81)          |
| E60 AMG                                    | W124 (84-97)          |
| 600SL/SL600 SL60 AMG                       | R129 (88-01)          |
| 600SE 600SEL 600SEC S600 S600L SC600 CL600 | W140 (91-98)          |



## LIMOUSINES



### W186

| Chassis | Engine      | Model            | Years   | HP  | Production |
|---------|-------------|------------------|---------|-----|------------|
| 186.000 | 186.920     | 300              | 1951-54 | 115 | 4563 (+2)  |
| 186.013 | 186.920     | 300 cabriolet D  | 1951-54 | 115 | 455        |
| 186.000 | 186.920     | 300b             | 1954-55 | 125 | 1639 (+10) |
| 186.014 | 186.920     | 300b cabriolet D | 1954-55 | 125 | 136        |
| 186.016 | 186.920/921 | 300c             | 1955-57 | 125 | 1429 (+3)  |
| 186.033 | 186.920/921 | 300c cabriolet D | 1955-56 | 125 | 51         |

300c production includes 62 long wheel base versions

Production numbers in brackets are chassis only



### W188

| Chassis | Engine  | Model             | Years   | HP  | Production |
|---------|---------|-------------------|---------|-----|------------|
| 188.000 | 188.920 | 300S Cabriolet A  | 1951-55 | 150 | 203        |
| 188.011 | 188.920 | 300S Coupé        | 1951-55 | 150 | 216        |
| 188.012 | 188.920 | 300S Roadster     | 1952-55 | 150 | 141        |
| 188.013 | 199.980 | 300Sc Cabriolet A | 1956-57 | 175 | 49         |
| 188.014 | 199.980 | 300Sc Coupé       | 1955-58 | 175 | 98         |
| 188.015 | 199.980 | 300Sc Roadster    | 1956-58 | 175 | 53         |



### W189

| Chassis | Engine      | Model             | Years   | HP  | Production |
|---------|-------------|-------------------|---------|-----|------------|
| 189.010 | 189.980/981 | 300d              | 1957-62 | 160 | 3077       |
| 189.011 | 189.980/981 | 300d with sunroof | 1957-62 | 160 | with above |
| 189.033 | 189.980/981 | 300d cabriolet    | 1958-62 | 160 | 65         |



## W100

| Chassis | Engine  | Model                        | Years   | Production | HP  |
|---------|---------|------------------------------|---------|------------|-----|
| 100.012 | 100.980 | 600 Limousine                | 1964-81 | 2190       | 250 |
| 100.014 | 100.980 | 600 Pullman-4 door           | 1964-81 | 304        | 250 |
| 100.615 | 100.980 | 600 Pullman Landaulet-4 door | 1965-81 | 32         | 250 |
| 100.016 | 100.980 | 600 Pullman-6 door           | 1964-81 | 124        | 250 |
| 100.617 | 100.980 | 600 Pullman Landaulet-6 door | 1967-81 | 26         | 250 |

The above production included 45 special protection versions. In addition, 1 coupé was produced and 1 non Pullman Landaulet



## SL ROADSTERS



### W198

| Chassis | Engine      | Model                     | Years   | HP  | Production |
|---------|-------------|---------------------------|---------|-----|------------|
| 198.040 | 198.980     | 300SL coupé               | 1954-57 | 215 | 1,371      |
| 198.043 | 198.980     | 300SL coupé aluminum body | 1954-57 | 215 | 29         |
| 198.042 | 198.980/982 | 300SL Roadster            | 1957-64 | 215 | 1,858      |

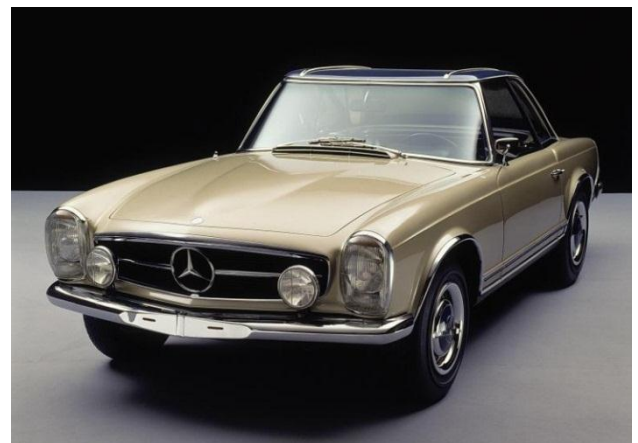


### W121

| Chassis          | Engine  | Model | Years   | HP  | Production   |
|------------------|---------|-------|---------|-----|--------------|
| 121.040 coupé    | 121.921 | 190SL | 1955-61 | 105 | 25,881       |
| 121.042 roadster |         |       |         |     |              |
| 121.040 coupé    | 121.928 | 190SL | 1961-63 | 105 | (with above) |
| 121.042 roadster |         |       |         |     |              |

### W113 SL

| Chassis | Engine  | Model | Years   | HP  | Prodn. |
|---------|---------|-------|---------|-----|--------|
| 113.042 | 127.981 | 230SL | 1963-67 | 150 | 19,381 |
| 113.043 | 129.982 | 250SL | 1966-68 | 150 | 5,196  |
| 113.044 | 130.983 | 280SL | 1967-71 | 170 | 23,885 |



### R107 SL

| Chassis | Engine      | Model | Years   | kW      | Production |
|---------|-------------|-------|---------|---------|------------|
| 107.042 | 110.982/986 | 280SL | 1974-85 | 136     | 25,436     |
| 107.041 | 103.982     | 300SL | 1985-89 | 138     | 13,742     |
| 107.043 | 116.982/984 | 350SL | 1970-80 | 147/143 | 15,304     |
| 107.044 | 117.982/985 | 450SL | 1971-80 | 165/160 | 66,298     |
| 107.045 | 116.960/962 | 380SL | 1980-85 | 160/150 | 53,200     |
| 107.046 | 117.960/964 | 500SL | 1980-89 | 177/180 | 11,812     |
| 107.047 | 116.964     | 420SL | 1985-89 | 160     | 2,148      |
| 107.048 | 117.967     | 560SL | 1985-89 | 170     | 49,347     |



R107 Roadster



R107 coupe

## R107 Coupés

| Chassis | Engine      | Model      | Years   | kW      | Production |
|---------|-------------|------------|---------|---------|------------|
| 107.022 | 110.982/986 | 280SLC     | 1974-81 | 136     | 10,666     |
| 107.023 | 116.982/984 | 350SLC     | 1971-80 | 147/143 | 13,925     |
| 107.024 | 117.982/985 | 450SLC     | 1972-80 | 165/160 | 31,739     |
| 107.026 | 117.960     | 450SLC 5.0 | 1977-80 | 177     | 1,636      |
| 107.025 | 116.960     | 380SLC     | 1980-81 | 160     | 3,789      |
| 107.026 | 117.960     | 500SLC     | 1980-81 | 177     | 1,133      |



## R129 SL

| Chassis | Engine       | Model       | Years   | kW  | Production |
|---------|--------------|-------------|---------|-----|------------|
| 129.058 | 104.943      | SL280       | 1993-98 | 142 | 10,319     |
| 129.059 | 112.925      | SL280 (V6)  | 1998-00 | 150 | 1,704      |
| 129.060 | 103.984      | 300SL       | 1988-93 | 140 | 12,020     |
| 129.061 | 104.981      | 300SL-24    | 1988-93 | 170 | 26,984     |
| 129.063 | 104.991      | SL320       | 1993-98 | 170 | 32,223     |
| 129.064 | 112.943      | SL320 (V6)  | 1997-01 | 165 | 7,070      |
| 129.066 | 119.960      | 500SL       | 1989-93 | 240 | 79,827     |
| 129.067 | 119.972/982  | 500SL SL500 | 1992-98 | 235 | With above |
| 129.068 | 113.961      | SL500       | 1997-01 | 225 | 23,704     |
| 129.076 | 120.981/983  | 600SL SL600 | 1991-01 | 290 | 11,089     |
| 129.067 | M119 E60 AMG | SL 60 AMG   | 1993-98 | 280 | 633        |
| 129.068 | 113.985      | SL 55 AMG   | 1999-01 | 260 | 65         |
| 129.076 | M120.990     | SL 73 AMG   | 1999-01 | 386 | 85         |

There were also other low volume special editions including AMG





## R230 SL

| Model                 | Chassis | Model Years | Engine Code | Engine                   | Power & torque | Prodn |
|-----------------------|---------|-------------|-------------|--------------------------|----------------|-------|
| <b>SL 280</b>         | 230.454 | 2008–09     | M272.949    | 2,996 cc V6              | 170 kW 300 Nm  |       |
| <b>SL 300</b>         | 230.454 | 2009-12     | M272.949    | 2,996 cc V6              | 170 kW 300 Nm  |       |
| <b>SL 350</b>         | 230.467 | 2002–06     | M112.973    | 3,724 cc V6              | 180 kW 350 Nm  |       |
| <b>SL 350</b>         | 230.456 | 2006–08     | M272.966    | 3,498cc V6               | 200 kW 350 Nm  |       |
| <b>SL 350</b>         | 230.458 | 2008-12     | M272.968    | 3,498 cc V6              | 232 kW 360 Nm  |       |
| <b>SL 500</b>         | 230.475 | 2001–06     | M113.963    | 4,966 cc V8              | 225 kW 460 Nm  |       |
| <b>SL 500, SL 550</b> | 230.471 | 2006–12     | M273.965    | 5,461 cc V8              | 285 kW 530 Nm  |       |
| <b>SL 55 AMG</b>      | 230.474 | 2001–06     | M113.992    | 5,439 ccV8 supercharged  | 350 kW 700 Nm  |       |
| <b>SL 55 AMG</b>      | 230.472 | 2006–12     | M113.995    | 5,439 cc V8 supercharged | 380 kW 720 Nm  |       |
| <b>SL 600</b>         | 230.476 | 2003–06     | M275.951    | 5,513 cc V12 BiTurbo     | 368 kW 800 Nm  |       |
| <b>SL 600</b>         | 230.477 | 2006–08     | M275.954    | 5,513 cc V12 BiTurbo     | 380 kW 830 Nm  |       |
| <b>SL 63 AMG</b>      | 230.470 | 2008-12     | M156.981    | 6,208 cc V8              | 386 kW 630 Nm  |       |
| <b>SL 65 AMG</b>      | 230.479 | 2004-08     | M275.981    | 5,980cc V12 BiTurbo      | 450kW 1000Nm   |       |
| <b>SL 65 AMG</b>      | 230.479 | 2008-12     | M275.983    | 5,980 cc V12 BiTurbo     | 493kW 1000Nm   |       |

### Black Series

General production 2001 to 2011 updated in 2008



## R231 SL

| Model                  | Chassis | Years     | Engine Code | Engine               | Power & torque  |
|------------------------|---------|-----------|-------------|----------------------|-----------------|
| <b>SL 350</b>          | 231.457 | 2012-2014 | M 276.954   | 3,498 cc V6          | 225 kW 370 Nm   |
| <b>SL 400</b>          | 231.465 | 2014-2016 | M 276.825   | 2,996 cc V6 BiTurbo  | 245 kW 480 Nm   |
| <b>SL 400</b>          | 231.466 | 2017-     | M 276.825   | 2,996 cc V6 BiTurbo  | 270 kW 500 Nm   |
| <b>SL 500</b>          | 231.473 | 2012-2015 | M 278.927   | 4,663 cc V8 BiTurbo  | 320 kW 700 Nm   |
| <b>SL 500</b>          | 231.473 | 2016-     | M 278.927   | 4,663 cc V8 BiTurbo  | 335 kW 700 Nm   |
| <b>SL 63 AMG</b>       | 231.474 | 2012-14   | M 157.983   | 5,461 cc V8 BiTurbo  | 395 kW 800 Nm   |
| <b>SL 63 AMG (PP)*</b> | 231.474 | 2012-14   | M 157.983   | 5,461 cc V8 BiTurbo  | 415 kW 900 Nm   |
| <b>SL 63 AMG</b>       | 231.474 | 2015-     | M 157.983   | 5,461 cc V8 BiTurbo  | 430 kW 900 Nm   |
| <b>SL 65 AMG</b>       | 231.479 | 2012-     | M 279.981   | 5,980 cc V12 BiTurbo | 463 kW 1,000 Nm |

The SL 500 is badged as SL 550 in U.S., Canada, and Japan.

\*AMG Performance package:



## SLR - C199 Coupé R199 Roadster Z199 Speedster

| Model                 | Chassis | Years   | Engine Code | Engine                   | Power & torque | Prodn |
|-----------------------|---------|---------|-------------|--------------------------|----------------|-------|
| <b>Coupé</b>          | 199.376 | 2003–09 | M155.980    | 5,439 cc V8 supercharged | 460 kW 780 Nm  |       |
| <b>722 Edition</b>    | 199.376 | 2006-09 | M155.980    | 5,439 cc V8 supercharged | 478 kW 820 Nm  |       |
| <b>Roadster</b>       | 199.476 | 2007-09 | M155.980    | 5,439 cc V8 supercharged | 460 kW 780 Nm  |       |
| <b>Roadster 722 S</b> | 199.476 | 2009    | M155.980    | 5,439 cc V8 supercharged | 478 kW 820 Nm  | 150   |
| <b>Speedster</b>      | 199.976 | 2009    | M155.980    | 5,439 cc V8 supercharged | 485kW          | 75    |

A total of 2,157 SLRs were produced



## SLS AMG C197 Coupé and R197 Roadster

| Model                               | Chassis | Years   | Engine Code | Engine                        | Power & torque | Prodn |
|-------------------------------------|---------|---------|-------------|-------------------------------|----------------|-------|
| <b>SLS AMG</b>                      | 197.377 | 2009-14 | M159.980    | 6,208 cc V8                   | 420 kW 650 Nm  |       |
| <b>SLS AMG Roadster</b>             | 197.477 | 2011-14 | M159.980    | 6,208 cc V8                   | 420 kW 650 Nm  |       |
| <b>SLS AMG GT</b>                   | 197.378 | 2012-14 | M159.980    | 6,208 cc V8                   | 435 kW 650 Nm  |       |
| <b>SLS AMG GT Roadster</b>          | 197.478 | 2012-14 | M159.980    | 6,208 cc V8                   | 435 kW 650 Nm  |       |
| <b>SLS AMG Coupé Black Series</b>   | 197.    | 2013–14 | M159.980    | 6,208 cc V8                   | 464 kW 635 Nm  |       |
| <b>SLS AMG Coupé Electric Drive</b> | 197.    | 2013    |             | 4 synchronous electric motors | 552kW 1000Nm   |       |



## AMG GT C190 Coupé and R190 Roadster

| Model         | Chassis | Years   | Engine Code | Engine               | Power & torque | Production |
|---------------|---------|---------|-------------|----------------------|----------------|------------|
| GT            | 190.377 | 2015-17 | M178.980    | 3,982 cc bi-turbo V8 | 340 kW 600 Nm  |            |
| GT            | 190.377 | 2017    | M178.980    | 3,982 cc bi-turbo V8 | 350 kW 630 Nm  |            |
| GT S          | 190.378 | 2015-17 | M178.980    | 3,982 cc bi-turbo V8 | 380 kW 650 Nm  |            |
| GT S          | 190.378 | 2017    | M178.980    | 3,982 cc bi-turbo V8 | 384 kW 670 Nm  |            |
| GT C          | 190.380 | 2017    | M178.980    | 3,982 cc bi-turbo V8 | 410 kW 680 Nm  |            |
| GT R          | 190.379 | 2017    | M178.980    | 3,982 cc bi-turbo V8 | 430 kW 700 Nm  |            |
| GT Roadster   | 190.477 | 2017    | M178.980    | 3,982 cc bi-turbo V8 | 350 kW 630 Nm  |            |
| GT C Roadster | 190.480 | 2017    | M178.980    | 3,982 cc bi-turbo V8 | 410 kW 680 Nm  |            |
| GT S Roadster | 190.478 | 2018-   | M178.980    | 3,982 cc bi-turbo V8 | 380 kW 650 Nm  |            |
| GT3           | 190.    | 2016    | M159        | 6,208 cc V8          | 464 kW 635 Nm  |            |



## SLK ROADSTERS



### R170 SLK

| Chassis | Engine  | Model              | Years   | kW  | Production |
|---------|---------|--------------------|---------|-----|------------|
| 170.435 | 111.946 | SLK 200            | 1996-00 | 100 | 44,846     |
| 170.445 | 111.943 | SLK 200 Kompressor | 1996-00 | 141 | 12,353     |
| 170.444 | 111.958 | SLK 200 Kompressor | 2000-04 | 120 | 55,449     |
| 170.447 | 111.973 | SLK 230 Kompressor | 1996-00 | 142 | 113,520    |
| 170.449 | 111.983 | SLK 230 Kompressor | 2000-04 | 145 | 47,305     |
| 170.465 | 112.947 | SLK320             | 2000-04 | 160 | 33,416     |
| 170.466 | 112.960 | SLK32 AMG          | 2001-04 | 260 | 4,333      |



### R171 SLK

| Model                   | Chassis | Years   | Engine Code | Engine                   | Power & torque |
|-------------------------|---------|---------|-------------|--------------------------|----------------|
| SLK 200 Kompressor      | 171.442 | 2004–08 | M271.944    | 1,796 cc L4 supercharged | 120 kW 240 Nm  |
| SLK 200 Kompressor      | 171.445 | 2008–11 | M271.954    | 1,796 cc L4 supercharged | 135 kW, 240 Nm |
| SLK 280                 | 171.454 | 2005–08 | M272.942    | 2,996 cc V6              | 170 kW, 300 Nm |
| SLK 300                 | 171.454 | 2009–11 | M272.942    | 2,996 cc V6              | 170 Kw 300 Nm  |
| SLK 350                 | 171.456 | 2004–07 | M272.963    | 3,498 cc V6              | 200 kW 350 Nm  |
| SLK 350                 | 171.458 | 2008–11 | M272.969    | 3,498 cc V6              | 224 kW 360 Nm  |
| SLK 55 AMG              | 171.473 | 2004-11 | M113.989    | 5,439 cc V8              | 260 kW 510 Nm  |
| SLK 55 AMG Black Series | 171.473 | 2006–08 | M113.989    | 5,439 cc V8              | 294 kW 520 Nm  |



## R172 SLK and SLC

| Model              | Chassis | Years   | Engine Code  | Engine                        | Power & torque |
|--------------------|---------|---------|--------------|-------------------------------|----------------|
| <b>SLK 200</b>     | 172.448 | 2011-15 | M271.860/861 | 1,796 cc L4 turbo             | 135 kW 250 Nm  |
| <b>SLK 200</b>     | 172.434 | 2015-16 | M274.920     | 1,991 cc L4 turbo             | 135 kW 300 Nm  |
| <b>SLK 250</b>     | 172.447 | 2011-15 | M271.860/861 | 1,796 cc L4 turbo             | 150 kW 310 Nm  |
| <b>SLK300</b>      | 172.438 | 2015-16 | M274.920     | 1,991 cc L4 turbo             | 180 kW 370 Nm  |
| <b>SLK 350</b>     | 172.457 | 2011-16 | M276.956     | 3,498 cc V6                   | 225 kW 370 Nm  |
| <b>SLK 55 AMG</b>  | 172.475 | 2012-16 | M152         | 5,461 cc V8                   | 310 kW 540 Nm  |
| <b>SLK 250 CDI</b> | 172.403 | 2012-16 | OM651.980    | 2,143 cc 16V L4 2-stage turbo | 150 kW 500 Nm  |
| <b>SLC 180</b>     | 172.431 | 2016-19 | M274.910     | 1.6 litre L4 turbo            | 115kW, 250 Nm, |
| <b>SLC 200</b>     | 172.434 | 2016-19 | M274.920     | 1,991 cc L4 turbo             | 135kW 300 Nm   |
| <b>SLC 260</b>     | 172.435 |         | M274.920     | 1,991 cc L4 turbo             |                |
| <b>SLC 300</b>     | 172.438 | 2016-19 | M274.920     | 1,991 cc L4 turbo             | 180kW 370 Nm   |
| <b>AMG SLC 43</b>  | 172.466 | 2016-18 | M276.822     | 2996cc V6 bi-turbo            | 270kW          |
| <b>AMG SLC 43</b>  | 172.466 | 2018-19 | M276.822     | 2996cc V6 bi-turbo            | 287kW 520 Nm   |
| <b>SLC 250 d</b>   | 172.404 | 2016-19 | OM651.980    | 2,143 cc 16V L4 2-stage turbo | 150 kW 500 Nm  |

Updated to SLC Class in December 2015

## 1946 - 1955

### W136

| Chassis | Engine    | Model            | HP | Years   | Production   |
|---------|-----------|------------------|----|---------|--------------|
| 136.010 | 136.920/1 | 170V             | 38 | 1946-50 | 49,367       |
| 136.060 | 136.923   | 170Va            | 45 | 1950-52 | (with above) |
| 136.060 | 136.923   | 170Vb            | 45 | 1952-53 | (with above) |
| 136.040 | 136.922   | 170S             | 52 | 1949-52 | 28,764       |
| 136.042 | 136.922   | 170S Cabriolet A | 52 | 1949-51 | 830          |
| 136.043 | 136.922   | 170S Cabriolet B | 52 | 1949-51 | 1,603        |
| 136.081 | 136.926   | 170S-V           | 45 | 1953-55 | 3,122        |
| 136.110 | 636.915   | 170D             | 38 | 1949-50 | 33,823       |
| 136.160 | 636.916   | 170Da            | 40 | 1950-52 | (with above) |
| 136.160 | 636.916   | 170Db            | 40 | 1952-53 | (with above) |
| 136.181 | 636.931   | 170S-D           | 40 | 1953-55 | 14,887       |



W136



W191

### W191 Sedans

| Chassis | Engine  | Model  | HP | Years   | Production |
|---------|---------|--------|----|---------|------------|
| 191.010 | 136.922 | 170Sb  | 52 | 1952-53 | 8,094      |
| 191.110 | 636.918 | 170D-S | 40 | 1952-53 | 12,985     |



### W187

| Chassis | Engine  | Model           | Years   | HP    | Production |
|---------|---------|-----------------|---------|-------|------------|
| 187.010 | 180.920 | 220 Sedan       | 1951-54 | 80    | 16,154     |
| 187.012 | 180.920 | 220 Cabriolet A | 1951-55 | 80/85 | 1,278      |
| 187.013 | 180.920 | 220 Cabriolet B | 1951-53 | 80    | 997        |
| 187.023 | 180.920 | 220 Coupé       | 1953-55 | 80/85 | 85         |
| 187.018 | 180.920 | 220 Open tourer | 1952-53 | 80    | 41         |



## W105 Sedan

|           |         |
|-----------|---------|
| Chassis:  | 105.010 |
| Engine:   | 180.921 |
| HP (DIN)  | 85/90   |
| Model:    | 219     |
| Produced: | 27845   |
| Years:    | 1956-59 |



## W120 Sedans

| Chassis | Engine  | Model | HP | Years   | Production |
|---------|---------|-------|----|---------|------------|
| 120.010 | 136.925 | 180   | 52 | 1953-57 | 52,186     |
| 120.010 | 121.923 | 180a  | 65 | 1957-59 | 27,353     |
| 120.010 | 121.923 | 180b  | 68 | 1959-61 | 29,415     |
| 120.010 | 121.927 | 180c  | 68 | 1961-62 | 9,280      |
| 120.110 | 636.930 | 180D  | 40 | 1953-59 | 116,485    |
| 120.110 | 636.930 | 180Db | 43 | 1959-61 | 24,676     |
| 120.110 | 621.914 | 180Dc | 48 | 1961-62 | 11,822     |

Models with a sunroof had the chassis codes W120.011 and 120.111  
 An additional 3340 partial body versions of the W120 chassis were built



## W121 Sedans

| Chassis | Engine  | Model | Years   | HP | Production |
|---------|---------|-------|---------|----|------------|
| 121.010 | 121.920 | 190   | 1956-59 | 75 | 61,345     |
| 121.010 | 121.920 | 190b  | 1959-61 | 80 | 28,463     |
| 121.110 | 621.910 | 190D  | 1958-59 | 50 | 20,629     |
| 121.110 | 621.910 | 190Db | 1959-61 | 50 | 61,309     |

Models with a sunroof had the chassis codes W121.011 and 121.111  
 An additional 1550 partial body versions of the W121 chassis were built

## W128

| Chassis | Engine      | Model           | Years     | HP      | Production |
|---------|-------------|-----------------|-----------|---------|------------|
| 128.010 | 127.980     | 220SE Sedan     | 1958-1959 | 115     | 1,974      |
| 128.030 | 127.980/983 | 220SE Cabriolet | 1958-1960 | 115/120 | 1,112      |
| 128.037 | 127.980/983 | 220SE Coupé     | 1958-1960 | 115/120 | 830        |



## W180 Sedan

| Chassis | Engine  | Model      | Years   | HP      | Production |
|---------|---------|------------|---------|---------|------------|
| 180.010 | 180.921 | 220a Sedan | 1954-56 | 85      | 25,937     |
| 180.010 | 180.924 | 220S Sedan | 1956-59 | 100/106 | 55,279     |

## W180 Coupé and Cabriolet

| Chassis | Engine  | Model          | Years   | HP      | Production |
|---------|---------|----------------|---------|---------|------------|
| 180.030 | 180.924 | 220S Coupé     | 1956-59 | 100/106 | 1,251      |
| 180.037 | 180.924 | 220S Cabriolet | 1956-59 | 100/106 | 2,178      |





## W110 Sedans

| Chassis | Engine      | Model | HP      | Years   | Production |
|---------|-------------|-------|---------|---------|------------|
| 110.010 | 121.924     | 190c  | 80      | 1961-65 | 130554     |
| 110.010 | 121.940     | 200   | 95      | 1965-68 | 70207      |
| 110.011 | 180.945/949 | 230   | 105/120 | 1965-68 | 39,619     |
| 110.110 | 621.912     | 190Dc | 55      | 1961-65 | 225645     |
| 110.110 | 621.918     | 200D  | 55      | 1965-68 | 161618     |

An additional 5859 chassis for special purpose bodies were built, 689 of these had long wheelbase



## W111 Sedans

| Chassis | Engine  | Model  | Years   | HP  | Production |
|---------|---------|--------|---------|-----|------------|
| 111.010 | 180.940 | 220b   | 1959-65 | 95  | 69,691     |
| 111.010 | 180.947 | 230S   | 1965-68 | 120 | 41,107     |
| 111.012 | 180.941 | 220Sb  | 1959-65 | 110 | 161,119    |
| 111.014 | 127.982 | 220SEb | 1959-65 | 120 | 66,086     |

An additional 341 model 230S chassis only were built



## W111 Coupés

| Chassis | Engine  | Model           | Years   | HP  | Production |
|---------|---------|-----------------|---------|-----|------------|
| 111.021 | 127.984 | 220SEb Coupé    | 1960-65 | 120 | 14,173     |
| 111.021 | 129.980 | 250SE Coupé     | 1965-67 | 150 | 5,259      |
| 111.024 | 130.980 | 280SE Coupé     | 1967-71 | 160 | 3,797      |
| 111.026 | 116.980 | 280SE 3.5 Coupé | 1969-71 | 200 | 3,270      |





## W111 Cabriolets

| Chassis | Engine  | Model               | Years   | HP  | Production |
|---------|---------|---------------------|---------|-----|------------|
| 111.023 | 127.984 | 220SEb Cabriolet    | 1961-65 | 120 | 2,729      |
| 111.023 | 129.980 | 250SE Cabriolet.    | 1965-67 | 150 | 954        |
| 111.025 | 130.980 | 280SE Cabriolet     | 1967-71 | 160 | 1,390      |
| 111.027 | 116.980 | 280SE 3.5 Cabriolet | 1969-71 | 200 | 1,232      |



## W112 Sedans

| Chassis | Engine      | Model  | Years   | HP      | Production |
|---------|-------------|--------|---------|---------|------------|
| 112.014 | 189.984/986 | 300SE  | 1961-65 | 160/170 | 5202       |
| 112.015 | 189.984/986 | 300SEL | 1962-65 | 160/170 | 1546       |

## W112 Coupés and Cabriolets

| Chassis | Engine      | Model           | Years   | HP      | Production |
|---------|-------------|-----------------|---------|---------|------------|
| 112.021 | 189.985/987 | 300SE Coupé     | 1962-67 | 160/170 | 2,419      |
| 112.023 | 189.985/987 | 300SE Cabriolet | 1962-67 | 170/170 | 708        |



## W108 Sedans

| Chassis | Engine  | Model      | Years   | HP  | Production   |
|---------|---------|------------|---------|-----|--------------|
| 108.012 | 108.920 | 250S       | 1965-69 | 130 | 74,677       |
| 108.014 | 129.980 | 250SE      | 1965-68 | 150 | 55,181       |
| 108.015 | 189.989 | 300SEb     | 1965-67 | 170 | 2,737        |
| 108.016 | 130.920 | 280S       | 1967-72 | 140 | 93,935       |
| 108.018 | 130.980 | 280SE      | 1967-72 | 160 | 91,051       |
| 108.019 | 130.980 | 280SEL     | 1968-71 | 160 | 8,250        |
| 108.057 | 116.980 | 280SE 3.5  | 1970-72 | 200 | 11,309       |
| 108.058 | 116.980 | 280SEL 3.5 | 1970-72 | 200 | 951 (+28 SP) |
| 108.067 | 117.984 | 280SE 4.5  | 1971-72 | 198 | 13,527       |
| 108.068 | 117.984 | 280SEL 4.5 | 1971-72 | 198 | 8,173        |



## W109 Sedans

| Chassis | Engine  | Model      | Years   | HP  | Production |
|---------|---------|------------|---------|-----|------------|
| 109.015 | 189.988 | 300SEL     | 1966-67 | 170 | 2,369      |
| 109.016 | 130.981 | 300SEL 2.8 | 1967-70 | 170 | 2,519      |
| 109.018 | 100.981 | 300SEL 6.3 | 1967-72 | 250 | 6,526      |
| 109.056 | 116.981 | 300SEL 3.5 | 1969-72 | 200 | 9,583      |
| 109.057 | 117.981 | 300SEL 4.5 | 1971-72 | 198 | 2,553      |



## W116 Sedans

| Chassis | Engine      | Model             | Years   | kW      | Production |
|---------|-------------|-------------------|---------|---------|------------|
| 116.020 | 110.922     | 280S              | 1972-80 | 118     | 122,848    |
| 116.024 | 110.983/985 | 280SE             | 1972-80 | 136     | 150,593    |
| 116.025 | 110.983/985 | 280SEL            | 1973-80 | 136     | 7,032      |
| 116.028 | 116.983/985 | 350SE             | 1972-80 | 147/151 | 51,100     |
| 116.029 | 116.983/985 | 350SEL .          | 1973-80 | 147/151 | 4,266      |
| 116.032 | 117.983/986 | 450SE             | 1972-80 | 165     | 41,604     |
| 116.033 | 117.983/986 | 450SEL .          | 1972-80 | 165     | 59,578     |
| 116.036 | 100.985     | 450SEL 6.9        | 1975-80 | 210     | 7,380      |
| 116.120 | 617.950     | 300SD Turbodiesel | 1977-80 | 82/89   | 28,634     |

An additional 292 special protection versions of the W116 were also produced





## W126 Sedans

| Chassis | Engine      | Model              | Years   | kW      | Production |
|---------|-------------|--------------------|---------|---------|------------|
| 126.020 | 103.941     | 260 SE             | 1985-91 | 122     | 20,836     |
| 126.021 | 110.924/926 | 280S               | 1979-85 | 115     | 42,996     |
| 126.022 | 110.987/989 | 280SE              | 1979-85 | 136     | 133,955    |
| 126.023 | 110.987/989 | 280SEL             | 1979-85 | 136     | 20,655     |
| 126.024 | 103.981     | 300SE              | 1985-91 | 138     | 105,422    |
| 126.025 | 103.981     | 300SEL             | 1985-91 | 138     | 40,956     |
| 126.032 | 116.961/963 | 380SE              | 1979-85 | 160/150 | 58,239     |
| 126.033 | 116.961/963 | 380SEL             | 1979-85 | 160/150 | 27,014     |
| 126.034 | 116.965     | 420 SE             | 1985-91 | 160/170 | 13,996     |
| 126.035 | 116.965     | 420SEL             | 1985-91 | 160/170 | 74,017     |
| 126.036 | 117.961/963 | 500SE              | 1979-85 | 177/170 | 33,418     |
| 126.036 | 117.965     | 500SE              | 1985-91 | 180/195 | with above |
| 126.037 | 117.961/963 | 500SEL             | 1979-85 | 177/170 | 72,639     |
| 126.037 | 117.965     | 500SEL             | 1985/91 | 180/195 | with above |
| 126.038 | 117.968     | 560SE              | 1988-91 | 200/220 | 1,252      |
| 126.039 | 117.968     | 560SEL             | 1985-92 | 200/220 | 75,071     |
| 126.120 | 617.951     | 300SD Turbodiesel  | 1979-85 | 89/92   | 78,725     |
| 126.125 | 603.961     | 300SDL Turbodiesel | 1985-87 | 110     | 13,830     |
| 126.134 | 603.970     | 350SD Turbodiesel  | 1990-91 | 100     | 2,066      |
| 126.135 | 603.970     | 350SDL Turbodiesel | 1990-91 | 100     | 2,925      |

An additional 1463 special protection versions of the W126 were also produced



## C126 Coupés

| Chassis | Engine  | Model   | Years   | kW      | Production |
|---------|---------|---------|---------|---------|------------|
| 126.043 | 116.963 | 380SEC  | 1980-85 | 150     | 11,267     |
| 126.044 | 117.963 | 500SEC  | 1980-85 | 170     | 30,184     |
| 126.044 | 117.965 | 500SEC  | 1985-91 | 180/195 | with above |
| 126.045 | 117.968 | 560SEC  | 1985-91 | 200/220 | 28,929     |
| 126.046 | 116.965 | 420 SEC | 1985-91 | 160/170 | 3,680      |



## W140 Sedans

| Chassis | Engine        | Model                  | Years   | kW      | Production |
|---------|---------------|------------------------|---------|---------|------------|
| 140.028 | 104.944       | 300SE2.8 /S280         | 1992-98 | 142     | 22,784     |
| 140.032 | 104.990/994   | 300SE /S320            | 1991-98 | 170     | 98,095     |
| 140.033 | 104.990/994   | 300SEL/S320L           | 1991-98 | 170     | 85,346     |
| 140.042 | 119.971       | 400SE/S420             | 1990-98 | 210/205 | 14,277     |
| 140.043 | 119.971       | 400SEL/S420L           | 1990-98 | 210/205 | 35,191     |
| 140.050 | 119.970       | 500SE/S500             | 1990-98 | 240/235 | 21,942     |
| 140.051 | 119.970       | 500SEL/S500L           | 1990-98 | 240/235 | 65,065     |
| 140.056 | 120.980 (V12) | 600SE/S600             | 1990-98 | 300/290 | 3,399      |
| 140.057 | 120.980 (V12) | 600SEL/S600L           | 1990-98 | 300/290 | 32,517     |
| 140.134 | 603.971       | 300SD/S350 Turbodiesel | 1991-96 | 110     | 20,518     |
| 140.136 | 606.960       | S300 Turbodiesel       | 1995-98 | 130     | 7,583      |



## C140 Coupés

| Chassis | Engine      | Model                  | Years   | kW  | Production |
|---------|-------------|------------------------|---------|-----|------------|
| 140.063 | 119.971/981 | S420Coupé/CL420        | 1994-98 | 205 | 2,496      |
| 140.070 | 119.970/980 | 500SEC/S500Coupé/CL500 | 1992-98 | 235 | 14,953     |
| 140.076 | 120.980/982 | 600SEC/S600Coupé/CL600 | 1992-98 | 290 | 8,573      |



## W220 Sedans

| Model                    | Chassis         | Years     | Engine code  | Engine                              | Power         | Prodn |
|--------------------------|-----------------|-----------|--------------|-------------------------------------|---------------|-------|
| S280 / S280 L            | 220.063/163     | 1998–2006 | M112.922     | 2.8L V6                             | 150kW         |       |
| S320 / S320 L            | 220.065/165     | 1998–2006 | M112.944     | 3.2L V6                             | 165kW         |       |
| S350 / S350 L            | 220.067/167     | 2003–2006 | M112.972     | 3.7L V6                             | 180kW         |       |
| S350 / S350 L<br>4matic  | 220.087/187     | 2003–2006 | M112.975     | 3.7L V6                             | 180kW         |       |
| S430 / S430 L            | 220.070/170     | 1998–2006 | M113.941     | 4.3L V8                             | 205kW         |       |
| S430 / S430 L<br>4matic  | 220.083/183     | 2002–2006 | M113.948     | 4.3L V8                             | 205kW         |       |
| S500 / S500 L            | 220.075/175/875 | 1998–2006 | M113.960     | 5.0L V8                             | 220kW         |       |
| S500 / S500 L<br>4Matic  | 220.084/184     | 2002–2006 | M113.966     | 5.0L V8                             | 225kW         |       |
| S600 L                   | 220.178/878     | 1998–2002 | M137.970/980 | 5.8L V12                            | 270kW         |       |
| S600 L                   | 220.176         | 2003–2006 | M275.960     | 5.5L twin-turbo V12                 | 368kW         |       |
| S55 AMG                  | 220.073         | 2000–2001 | M113.986     | 5.4L V8                             | 265kW         |       |
| S55 L AMG                | 220.173         | 2000–2001 | M113.986     | 5.4L V8                             | 265kW         |       |
| S55 AMG<br>Kompressor    | 220.074         | 2002–2006 | M113.991     | 5.4L supercharged<br>V8             | 368kW         |       |
| S55L AMG<br>Kompressor   | 220.174         | 2002–2006 | M113.991     | 5.4L supercharged<br>V8             | 368kW         |       |
| S65 AMG                  | 220.179         | 2005–2006 | M275.980     | 6.0L twin-turbo V12                 | 450kW         |       |
| S320 CDI / S320 L<br>CDI | 220.026/126     | 2000–2002 | OM613.960    | 3.2L Common rail<br>turbo diesel L6 | 145kW         |       |
| S320 CDI / S320 L<br>CDI | 220.025/125     | 2003–2006 | OM648.960    | 3.2L Common rail<br>turbo diesel L6 | 150kW         |       |
| S400 CDI / S400 L<br>CDI | 220.028/128     | 2000–2006 | OM628.960    | 4.0L Common rail<br>turbo diesel V8 | 184/191<br>kW |       |

Chassis codes: 4<sup>th</sup> digit 0 is standard wheelbase 1 is long wheelbase 8 is additional extended wheelbase



C215 CL Coupé

## C215 CL Coupés

| Chassis | Model  | Years   | Engine Code | Engine    | Power  | Torque | Production |
|---------|--------|---------|-------------|-----------|--------|--------|------------|
| 215.375 | CL 500 | 1998-06 | M113.960    | 5.0 L V8  | 225 kW | 460 Nm | 32,224     |
| 215.378 | CL 600 | 1998-02 | M137.970    | 5.8 L V12 | 270 kW | 530 Nm | 6,348      |



|         |           |         |          |                        |        |          |       |
|---------|-----------|---------|----------|------------------------|--------|----------|-------|
| 215.376 | CL 600    | 2002-05 | M275.950 | Turbocharged 5.5 L V12 | 368 kW | 800 Nm   | 2,255 |
| 215.373 | CL 55 AMG | 2000-02 | M113.986 | 5.4 L V8               | 265 kW | 530 Nm   | 2,217 |
| 215.374 | CL 55 AMG | 2002-05 | M113.991 | Supercharged 5.4 L V8  | 368 kW | 700 Nm   | 4,163 |
| 215.378 | CL 63 AMG | 2001    | M137.980 | 6.3 L V12              | 327 kW | 620 Nm   | 26    |
| 215.379 | CL 65 AMG | 2003-05 | M275.980 | Turbocharged 6.0L V12  | 450 kW | 1,000 Nm | 777   |



## W221 Sedans

| Model                       | Chassis     | Years   | Engine code | Engine                | Power, Torque  |
|-----------------------------|-------------|---------|-------------|-----------------------|----------------|
| <b>S 280 / S 300</b>        | 221.054/154 | 2007–13 | M272.946    | 2,997cc V6            | 170 kW, 300 Nm |
| <b>S 350</b>                | 221.056/156 | 2005–13 | M272.965    | 3,498cc V6            | 200 kW, 350 Nm |
| <b>S 350 4matic</b>         | 221.087/187 | 2008-13 | M272.975    | 3,498cc V6            | 200 kW, 350Nm  |
| <b>S 350 CGI</b>            | 221.057/157 | 2010–13 | M276.950    | 3,498cc V6            | 225 kW, 370 Nm |
| <b>S 350 CGI 4Matic</b>     | 221.082/182 | 2010–13 | M272.950    | 3,498cc V6            | 225 kW, 370 Nm |
| <b>S 400 HYBRID</b>         | 221.095/195 | 2009–13 | M272.974    | 3,498cc V6 + AC motor | 220 kW, 510 Nm |
| <b>S 450</b>                | 221.070/170 | 2006–13 | M273.922    | 4,663cc V8            | 250 kW, 460 Nm |
| <b>S 450 4Matic</b>         | 221.084/184 | 2006–13 | M273.924    | 4,663cc V8            | 250 kW, 460 Nm |
| <b>S 500 / S550</b>         | 221.071/171 | 2005–10 | M273.961    | 5,461cc V8            | 285 kW, 530 Nm |
| <b>S 500 / S 550 4matic</b> | 221.086/186 | 2005–10 | M273.961/8  | 5,461cc V8            | 285 kW, 530 Nm |
| <b>S 500 CGI</b>            | 221.073/173 | 2011–13 | M278.932    | 4,663cc V8 BiTurbo    | 320 kW, 700 Nm |
| <b>S 500 CGI 4Matic</b>     | 221.094/194 | 2011–13 | M278.932    | 4,663cc V8 BiTurbo    | 320 kW, 700 Nm |
| <b>S 600</b>                | 221.176     | 2006–13 | M275.953    | 5,513cc V12 BiTurbo   | 380 kW, 830 Nm |
| <b>S 600 Guard Pullman</b>  | 221.176     | 2008–13 | M275.953    | 5,513cc V12 BiTurbo   | 380 kW, 830 Nm |
| <b>S 63 AMG</b>             | 221.077/177 | 2006–11 | M156.984    | 6,208cc V8            | 386 kW, 630 Nm |
| <b>S 63 AMG</b>             | 221.074/174 | 2011–12 | M157.980    | 5,461cc V8 BiTurbo    | 400 kW, 800 Nm |
| <b>S 63 AMG</b>             | 221.074/174 | 2012-13 | M157.980    | 5,461cc V8 BiTurbo    | 420 kW         |
| <b>S 65 AMG</b>             | 221.179     | 2011-13 | M275.982    | 5,980cc V12 BiTurbo   | 463 kW         |
| <b>S 65 AMG</b>             | 221.179     | 2006–11 | M275.982    | 5,980cc V12 BiTurbo   | 450 kW, 1000Nm |
| <b>S 250 / S 300 CDI</b>    | 221.003/103 | 2009–13 | OM651.961   | 2,143cc I4/V6 turbo   | 150 kW, 500 Nm |
| <b>S 320 CDI</b>            | 221.022/122 | 2006–08 | OM642.930   | 2,987cc V6 Biturbo    | 173 kW, 540 Nm |
| <b>S 320 CDI 4Matic</b>     | 221.080/180 | 2006-08 | OM642.930   | 2,987cc V6 Biturbo    | 173 kW, 540 Nm |
| <b>S 320 CDI</b>            | 221.022/122 | 2008–09 | OM642.930   | 2,987cc V6 Biturbo    | 173 kW, 540 Nm |
| <b>S 320 CDI 4matic</b>     | 221.080/180 | 2006-09 | OM642.930   | 2,987cc V6 Biturbo    | 173 kW, 540 Nm |
| <b>S 350 CDI</b>            | 221.022/122 | 2009-10 | OM642.930   | 2,987cc V6 Biturbo    | 173 kW, 540 Nm |
| <b>S 350 CDI 4matic</b>     | 221.080/180 | 2009-10 | OM642.932   | 2,987cc V6 Biturbo    | 173 kW, 540 Nm |
| <b>S 350 BlueTEC</b>        | 221.026/126 | 2011-13 | OM642.862   | 2,987cc V6 Biturbo    | 190 kW, 617 Nm |
| <b>S 350 4Matic BlueTEC</b> | 221.083/183 | 2011-13 | OM642.868   | 2,987cc V6 Turbo      | 190 kW, 617 Nm |
| <b>S 420 CDI</b>            | 221.028/128 | 2006–09 | OM629.911   | 3,996 cc V8 Biturbo   | 235 kW, 730 Nm |
| <b>S 450 CDI</b>            | 221.028/128 | 2009–11 | OM629.911   | 3,996 cc V8 Biturbo   | 235 kW, 730 Nm |

Chassis Code: 1 as 4<sup>th</sup> digit indicates long wheelbase

S 280 is only sold in the UK, Ireland and Asia (badged as S 300)

S 350 CDI 4Matic is badged as S 350 CDI 4Matic BlueEfficiency in Germany.

S 500 is badged as S 550 in Canada, US and Japan market.



## C216 CL Coupé

|                 |             |         |          |                         |         |          |
|-----------------|-------------|---------|----------|-------------------------|---------|----------|
| CL 500 / 4Matic | 216.371/386 | 2006-10 | M273.961 | V8 5,461 cc             | 285 kW  | 530 Nm·  |
| CL 500 / 4Matic | 216.373/394 | 2010-14 | M278.920 | V8 4,663 cc             | 320 kW  | 700 Nm   |
| CL 600          | 216.376     | 2006-14 | M275.953 | V12 twin turbo 5,513 cc | 380 kW  | 830 Nm·  |
| CL 63 AMG       | 216.377     | 2006-10 | M156.984 | V8 6,208 cc             | 386 kW  | 630 Nm   |
| CL 63 AMG       | 216.374     | 2010-14 | M157.980 | V8 5,461cc              | 400 kW  | 800 Nm   |
| CL 63 AMG (PP*) | 216.374     | 2011-14 | M157.980 | V8 5,461cc              | 420 kW* | 900 Nm * |
| CL 65 AMG       | 216.379     | 2006-10 | M275.982 | V12 twin turbo 5,980 cc | 450 kW  | 1,000 Nm |
| CL 65 AMG       | 216.379     | 2010-14 | M275.982 | V12 twin turbo 5,980 cc | 463 kW  | 1,000 Nm |

\*AMG Performance package:



## W222 Sedans and V222 long wheelbase sedans

|                       |                 |         |           |                                     |                      |
|-----------------------|-----------------|---------|-----------|-------------------------------------|----------------------|
| S 320 L               | 222.162         | 2014–17 | M276.824  | 2996 cc V6 turbo                    | 200 kW, 400 Nm       |
| S 350 L               | 222.155         | 2017–   | M276.824  | 2996 cc V6 turbo                    | 230 kW               |
| S 400 L               | 222.165         | 2013-17 | M276.824  | 2996 cc V6 turbo                    | 245kW                |
| S 400 4matic/ Maybach | 222.067/167/967 | 2013–   | M276.824  | 2996 cc V6 biturbo                  | 245 kW, 480 Nm       |
| S 400 HYBRID          | 222.057/157     | 2013–   | M276.960  | 3498 cc V6 + electric motor         | 225 kW               |
| S 450, S 450 L        | 222.066/166     | 2017–   | M 276.824 | 2996 cc V6 turbo                    | 270 kW, 500 Nm       |
| S 450, S 450 L 4Matic | 222.064/164     | 2017–   | M 276.824 | 2996 cc V6 turbo                    | 270 kW, 500 Nm       |
| S 450 Maybach 4Matic  | 222.959/964     | 2017–   | M 276.824 | 2996 cc V6 turbo                    | 270 kW, 500 Nm       |
| S 450 EQ boost        | 222.058/158     | 2017–   | M256.930  | 2,999 cc Inline-6                   | 270 kW, 500 Nm       |
| S 450 EQ boost 4matic | 222.059/159     | 2017–   | M256.930  | 2,999 cc Inline-6                   | 270 kW, 500 Nm       |
| S 500, S 500 L        | 222.082/182     | 2013–17 | M 278.929 | 4663 cc V8 biturbo                  | 335 kW, 700 Nm       |
| S 500, S500 L 4Matic  | 222.085/185     | 2013-17 | M 278.929 | 4663 cc V8 biturbo                  | 335 kW, 700 Nm       |
| S 500 4matic          | 222.169         | 2013-   | M256.930  | 2,999 cc Inline-6                   | 320kW, 520Nm         |
| S 500 Maybach 4matic  | 222.969         | 2013-   | M256.930  | 2,999 cc Inline-6                   | 320kW, 520Nm         |
| S 500 4matic          | 222.184         | 2014-   | M278.910  | 4663 cc V8 biturbo                  | 310kW                |
| S 500 Maybach 4matic  | 222.984         | 2015    | M278.910  | 4663 cc V8 biturbo                  | 310 kW               |
| S 500 Maybach/4matic  | 222.982/985     | 2014-   | M 278.929 | 4663 cc V8 biturbo                  | 335 kW, 700 Nm       |
| S 500, S 500 L        | 222.060/160     | 2017–   | M 256.930 | 2,999 cc Inline-6                   | 320 kW, 520 Nm       |
| S 500 HYBRID          | 222.163         | 2014–   | M 276.824 | 2996 cc V6 biturbo + electric motor | 325 kW, 649 Nm total |
| S 560, S 560 L,       | 222.083/183     | 2017–   | M176.980  | 3.982 cc. V8 twin-turbo             | 345 kW, 700 Nm       |
| S 560 4Matic          | 222.086/186     | 2017–   | M176.980  | 3.982 cc. V8 twin-turbo             | 345 kW, 700 Nm       |
| S 560 Maybach/ 4matic | 222.983/986     | 2017–   | M176.980  | 3.982 cc. V8 twin-turbo             | 345 kW, 700 Nm       |
| S 560 E               | 222.173         | 2017–   | M276.824  | 2996 cc V6 biturbo                  | 270 kW               |
| S 600, Maybach S 600  | 222.176/976     | 2014–   | M 277.980 | 5980 cc V12 biturbo                 | 390 kW, 830 Nm       |
| S 650 Maybach         | 222.980         | 2017-   | M279.980  | 5980 cc V12 biturbo                 | 463 kW, 1000Nm       |

|                       |             |         |            |  |                |
|-----------------------|-------------|---------|------------|--|----------------|
| S 63 AMG              | 222.077/177 | 2013–17 | M157.985   | 5461 cc V8 biturbo                     | 430 kW, 900 Nm |
| S 63 AMG 4Matic       | 222.178     | 2013–17 | M157.985   | 5461 cc V8 biturbo                     | 430 kW, 900 Nm |
| S 63 AMG L/ 4Matic    | 222.187/188 | 2017–   | M177.980   | 3.982 cc V8 twin-turbo                 | 450 kW, 900 Nm |
| S 65 AMG              | 222.179     | 2014–   | M 279.980  | 5980 cc V12 biturbo                    | 463 kW, 1000Nm |
| S 300 BlueTec HYBRID  | 222.004/104 | 2014–   | OM 651.921 | 2148 cc I4 twin turbo + electric motor | 170 kW, 750 Nm |
| S 350 BlueTEC         | 222.032/132 | 2013–   | OM 642.861 | 2987 cc V6 turbo                       | 190 kW, 620 Nm |
| S 350 BlueTEC, 4Matic | 222.033/133 | 2014–   | OM 642.867 | 2987 cc V6 turbo                       | 190 kW, 620 Nm |
| S 350 CDI             | 222.123     | 2013–   | OM 642.861 | 2987 cc V6 turbo                       | 190kW          |
| S 350 d               | 222.020/120 | 2017–   | OM 656.929 | 2,928 cc Inline 6                      | 210 kW, 600 Nm |
| S 350 d 4matic        | 222.021/121 | 2017–   | OM 656.929 | 2,928 cc Inline 6                      | 210 kW, 600 Nm |
| S 400 d               | 222.034/134 | 2017–   | OM 656.929 | 2,928 cc Inline 6                      | 250 kW, 700 Nm |
| S 400 d 4matic        | 222.035/135 | 2017–   | OM 656.929 | 2,928 cc Inline 6                      | 250 kW, 700 Nm |

The S 500 (and 4Matic) is sold as the S 550 in the US  
Chassis code: 4<sup>th</sup> digit 0 is standard wheelbase 1 is long wheelbase



A217 Cabriolet

## C217 Coupés

|                      |             |         |          |                     |                  |
|----------------------|-------------|---------|----------|---------------------|------------------|
| S 400 / S450 4Matic  | 217.364     | 2014-   | M276.824 | 2996 cc V6          | 270kW, 500Nm     |
| S 500 / S500 4matic  | 217.382/385 | 2014-17 | M278.929 | 4663 cc V8 biturbo  | 335 kW, 700 Nm   |
| S 500 4matic         | 217.384     | 2014-   | M278.910 | 3996cc V8           | 310kW            |
| S 560 / S 560 4Matic | 217.383/386 | 2017-   | M176.980 | 3982 cc V8 biturbo  | 345 kW, 700 Nm   |
| S 63 AMG / 4matic    | 217.377/378 | 2014-17 | M157.985 | 5461 cc V8 biturbo  | 430 kW, 900 Nm   |
| S 63 AMG / 4Matic    | 217.387/388 | 2017-   | M177.980 | 3982 cc V8 biturbo  | 450 kW, 900 Nm   |
| S 65 AMG             | 217.379     | 2014-   | M279.980 | 5980 cc V12 biturbo | 463 kW, 1,000 Nm |

The S 500 is sold as the S 550 in the US

## A217 Cabriolets

|                   |             |         |          |                     |                  |
|-------------------|-------------|---------|----------|---------------------|------------------|
| S 500             | 217.482     | 2015-17 | M278.929 | 4663 cc V8 biturbo  | 335 kW, 700 Nm   |
| S 560             | 217.483     | 2017-   | M176.980 | 3982 cc V8 biturbo  | 345 kW, 700 Nm   |
| S 650 Maybach     | 217.9       | 2017-   | M279.980 | 5980 cc V12 biturbo | 463 kW, 1,000Nm  |
| S 63 AMG / 4matic | 217.477/478 | 2015-17 | M157.985 | 5461 cc V8 biturbo  | 430 kW, 900 Nm   |
| S 63 AMG / 4Matic | 217.487/488 | 2017-   | M177.980 | 3982 cc V8 biturbo  | 450 kW, 900 Nm   |
| S 65 AMG          | 217.479     | 2014-   | M279.980 | 5980 cc V12 biturbo | 463 kW, 1,000 Nm |

The S 500 is sold as the S 550 in the US

## W115 Sedans

| Chassis | Engine  | Model    | Years   | kW | Production |
|---------|---------|----------|---------|----|------------|
| 115.015 | 115.923 | 200/8    | 1967-76 | 70 | 288,785    |
| 115.010 | 115.920 | 220/8    | 1967-73 | 77 | 128,739    |
| 115.017 | 115.951 | 230.4    | 1972-76 | 81 | 87,765     |
| 115.110 | 615.912 | 220D/8   | 1967-76 | 44 | 420,273    |
| 115.114 | 617.910 | 240D 3.0 | 1974-76 | 59 | 53,690     |
| 115.115 | 615.913 | 200D/8   | 1967-76 | 40 | 339,927    |
| 115.117 | 616.916 | 240D     | 1973-76 | 48 | 131,319    |



## W114 Sedans

| Chassis | Engine  | Model       | Years   | kW  | Production |
|---------|---------|-------------|---------|-----|------------|
| 114.010 | 114.920 | 250         | 1967-72 | 96  | 78,303     |
| 114.011 | 130.923 | 250 2.8     | 1970-76 | 96  | 34,061     |
| 114.015 | 180.954 | 230/8 230.6 | 1967-76 | 88  | 221,783    |
| 114.060 | 110.921 | 280         | 1972-76 | 118 | 44,537     |
| 114.062 | 110.981 | 280E        | 1972-76 | 136 | 22,836     |

## W114 Coupés

| Chassis | Engine  | Model    | Years   | kW  | Production |
|---------|---------|----------|---------|-----|------------|
| 114.021 | 114.920 | 250 C    | 1968-72 | 96  | 8824       |
| 114.023 | 130.923 | 250C 2.8 | 1969-76 | 96  | 11,768     |
| 114.022 | 114.980 | 250CE    | 1968-72 | 110 | 21787      |
| 114.073 | 110.921 | 280C     | 1972-76 | 118 | 13,151     |
| 114.072 | 110.981 | 280CE    | 1972-76 | 136 | 11,518     |







## W123 Sedans

| Chassis | Engine  | Model            | Years   | kW      | Production |
|---------|---------|------------------|---------|---------|------------|
| 123.020 | 115.938 | 200              | 1976-80 | 69      | 158,772    |
| 123.220 | 102.920 | 200              | 1980-85 | 80      | 217,315    |
| 123.023 | 115.954 | 230              | 1975-80 | 80      | 196,185    |
| 123.223 | 102.980 | 230E             | 1979-85 | 100     | 245,588    |
| 123.026 | 123.920 | 250              | 1975-85 | 95/103  | 122,864    |
| 123.030 | 110.923 | 280              | 1975-81 | 115     | 33,206     |
| 123.033 | 110.984 | 280E             | 1975-85 | 130/136 | 126,375    |
| 123.120 | 615.940 | 200D             | 1975-85 | 40      | 378,138    |
| 123.126 | 615.941 | 220D             | 1975-79 | 44      | 56,736     |
| 123.123 | 616.912 | 240D             | 1975-85 | 48      | 454,780    |
| 123.130 | 617.912 | 300D             | 1975-85 | 59/65   | 331,999    |
| 123.133 | 617.952 | 300D Turbodiesel | 1981-85 | 89/92   | 75,261     |

Production numbers for 250, 280E, 240D, 300D include long wheelbase and special purpose chassis.



## C123 Coupés

| Chassis | Engine  | Model             | Years   | kW      | Production |
|---------|---------|-------------------|---------|---------|------------|
| 123.043 | 115.954 | 230C              | 1976-80 | 80      | 18,675     |
| 123.243 | 102.980 | 230CE             | 1980-85 | 100     | 29,858     |
| 123.050 | 110.923 | 280C              | 1976-80 | 115     | 3,704      |
| 123.053 | 110.984 | 280CE             | 1976-85 | 130/136 | 32,138     |
| 123.150 | 617.912 | 300CD             | 1977-81 | 58/64   | 7,502      |
| 123.153 | 617.952 | 300CD Turbodiesel | 1981-85 | 89/92   | 8,007      |

## S123 Station Wagons

| Chassis | Engine  | Model             | Years   | kW      | Production |
|---------|---------|-------------------|---------|---------|------------|
| 123.280 | 102.920 | 200T              | 1980-86 | 80      | 18,860     |
| 123.083 | 115.954 | 230T              | 1978-80 | 80      | 6,884      |
| 123.283 | 102.980 | 230TE             | 1979-86 | 100     | 42,284     |
| 123.086 | 123.920 | 250T              | 1977-82 | 95/103  | 7,704      |
| 123.093 | 110.984 | 280TE             | 1977-86 | 130/136 | 19,789     |
| 123.183 | 616.912 | 240TD             | 1978-86 | 53      | 38,903     |
| 123.190 | 617.912 | 300TD             | 1977-86 | 59/65   | 36,874     |
| 123.193 | 617.952 | 300TD Turbodiesel | 1979-86 | 92      | 28,219     |



## W124 Sedans

| Chassis | Engine      | Model             | Years   | kW      | Production |
|---------|-------------|-------------------|---------|---------|------------|
| 124.020 | 102.922     | 200               | 1984-90 | 80      | 110,354    |
| 124.121 | 102.963     | 200E              | 1985-92 | 90/87   | 176,660    |
| 124.019 | 111.940     | 200E / E200       | 1992-95 | 100     | 82,588     |
| 124.023 | 102.982     | 230E              | 1984-92 | 100     | 374,422    |
| 124.022 | 111.960     | 220E / E220       | 1992-96 | 110     | 105,340    |
| 124.026 | 103.940     | 260E              | 1984-92 | 125/122 | 154,391    |
| 124.226 | 103.943     | 260E 4Matic       | 1986-91 | 118     | 1,943      |
| 124.028 | 104.942     | 280E / E280       | 1992/95 | 145     | 57,302     |
| 124.030 | 103.980/983 | 300E              | 1984-92 | 140/138 | 258,063    |
| 124.230 | 103.985     | 300E/E300 4Matic  | 1985-95 | 132     | 14,202     |
| 124.031 | 104.980     | 300E-24           | 1988-92 | 162     | 19,300     |
| 124.032 | 104.992     | 320E / E320       | 1992-95 | 162     | 63,950     |
| 124.034 | 119.975     | 400E / E420       | 1991-95 | 205     | 22,802     |
| 124.036 | 119.974     | 500E / E500       | 1990-95 | 240/235 | 10,479     |
|         | M119E60     | E60 AMG           | 1993-94 | 280     |            |
| 124.120 | 601.912     | 200D/E200D        | 1984-95 | 53/55   | 236,926    |
| 124.125 | 602.912     | 250D              | 1984-93 | 66/69   | 236,811    |
| 124.126 | 605.911     | E250Diesel        | 1992-96 | 83      | 41,411     |
| 124.129 | 602.962     | 250D/E250 Turbo   | 1988-95 | 93      | 48,876     |
| 124.130 | 603.912     | 300D              | 1984-93 | 80/83   | 131,647    |
| 124.131 | 606.910     | E300 Diesel       | 1992-95 | 100     | 23,166     |
| 124.330 | 603.913     | 300D 4Matic       | 1985-91 | 80/83   | 1,485      |
| 124.133 | 603.960     | 300D/E300 Turbo   | 1985-95 | 105/108 | 38,908     |
| 124.333 | 603.963     | 300D Turbo 4Matic | 1987-93 | 105/108 | 1,862      |



## C124 Coupé

| Chassis | Engine  | Model              | Years   | kW    | Production |
|---------|---------|--------------------|---------|-------|------------|
| 124.040 | 102.963 | 200CE              | 1990-92 | 90/87 | 5,912      |
| 124.040 | 111.940 | 200CE / E200 Coupé | 1992-96 | 100   | 7,848      |
| 124.043 | 102.982 | 230CE              | 1986-92 | 97    | 33,675     |
| 124.042 | 111.960 | 220CE / E220 Coupé | 1992-96 | 110   | 12,337     |
| 124.050 | 103.983 | 300CE              | 1986-92 | 132   | 43,486     |
| 124.051 | 104.980 | 300CE-24           | 1988-92 | 162   | 24,463     |
| 124.052 | 104.992 | 320CE / E320 Coupé | 1992-96 | 162   | 13,768     |
|         | M104E36 | E36 AMG Coupé      | 1993-96 | 200   |            |

# A124 Cabriolet

| Chassis | Engine  | Model              | Years   | kW  | Production |
|---------|---------|--------------------|---------|-----|------------|
| 124.060 | 111.940 | E200 Cabriolet     | 1993-97 | 100 | 6,922      |
| 124.062 | 111.960 | E220 Cabriolet     | 1992-97 | 110 | 8,458      |
| 124.061 | 104.980 | 300CE-24 Cabriolet | 1990-93 | 162 | 6,343      |
| 124.066 | 104.992 | E320 Cabriolet     | 1992-97 | 162 | 12,229     |
|         | M104E36 | E36 AMG Cabriolet  | 1993-97 | 200 |            |



# S124 Station wagons

| Chassis | Engine  | Model                           | Years   | kW      | Production |
|---------|---------|---------------------------------|---------|---------|------------|
| 124.080 | 102.922 | 200T                            | 1985-90 | 80      | 7,476      |
| 124.081 | 102.963 | 200TE                           | 1988-92 | 90/87   | 20,555     |
| 124.079 | 111.940 | 200TE / E200T                   | 1992-96 | 100     | 15,279     |
| 124.083 | 102.982 | 230TE                           | 1985-92 | 100     | 64,945     |
| 124.082 | 111.960 | 220TE / E220T                   | 1992-96 | 110     | 22,057     |
| 124.088 | 104.942 | 280TE / E280T                   | 1992/96 | 145     | 12,177     |
| 124.090 | 103.983 | 300TE                           | 1985-92 | 138     | 41,775     |
| 124.290 | 103.985 | 300TE/E300T 4Matic              | 1986-95 | 132     | 12,094     |
| 124.091 | 104.980 | 300TE-24                        | 1989-92 | 162     | 6,282      |
| 124.092 | 104.992 | 320TE / E320T                   | 1992-96 | 162     | 18,368     |
|         | M104E36 | E36 AMG                         | 1993-96 | 200     |            |
| 124.180 | 601.912 | 200TD                           | 1985-91 | 53/55   | 7,373      |
| 124.185 | 602.912 | 250TD                           | 1985-93 | 66/69   | 43,628     |
| 124.186 | 605.911 | E250 Diesel T                   | 1992-96 | 83      | 15,625     |
| 124.188 | 602.962 | 250TD/E250 Turbodiesel T        | 1990-96 | 93      | 4,745      |
| 124.190 | 603.912 | 300TD                           | 1986-93 | 80/83   | 21,901     |
| 124.191 | 606.910 | E300 Diesel T                   | 1992-96 | 100     | 9,071      |
| 124.193 | 603.960 | 300TD Turbodiesel               | 1985-95 | 105/108 | 14,844     |
| 124.393 | 603.963 | 300TD / E300 Turbodiesel 4Matic | 1986-95 | 105/108 | 2,317      |

## Notes:

4Matic: Chassis includes additional drive to the front wheels

W 124 also included the following Chassis:

| Chassis | Model                  | Production |
|---------|------------------------|------------|
| 124.027 | 260E LWB               | 1006       |
| 124.029 | E280 LWB               | 379        |
| 124.127 | 250D LWB               | 957        |
| 124.003 | 230E 'F' Chassis only  | 224        |
| 124.004 | 230E 'VF' Chassis only | 711        |
| 124.105 | 250D 'F' Chassis only  | 1042       |
| 124.106 | 250D 'VF' Chassis only | 2973       |
| 124.007 | 260E 'VF' Chassis only | 1049       |
| 124.008 | E280 'VF' Chassis only | 399        |





## W 210 Sedan and S210 Station Wagon

| Model              | Chassis            | Years   | Engine Code  | Engine      | Power & torque | Prodn |
|--------------------|--------------------|---------|--------------|-------------|----------------|-------|
| E 200              | 210.035/235        | 1995-00 | M111.942/945 | (L4) 1998cc | 100kW 190Nm    |       |
| E 200 Kompressor   | 210.045/245        | 1997-00 | M111.947     | (L4) 1998cc | 141kW 270Nm    |       |
| E 200 Kompressor   | 210.048/248        | 2000-02 | M111.957     | (L4) 1998cc | 120kW 230Nm    |       |
| E 230              | 210.037/237        | 1995-98 | M111.970     | (L4) 2295cc | 110kW 220Nm    |       |
| E 240              | 210.061/261        | 1997-00 | M112.911     | (V6) 2398cc | 125kW 225Nm    |       |
| E 240              | 210.062/262        | 2000-02 | M112.914     | (V6) 2597cc | 125kW 240Nm    |       |
| E 280              | 210.053            | 1995-97 | M104.945     | (L6) 2799cc | 142kW 270Nm    |       |
| E 280              | 210.063/263<br>663 | 1997-02 | M112.921     | (V6) 2799cc | 150kW 270Nm    |       |
| E 280 4matic       | 210.081/281        | 1997-02 | M112.921     | (V6) 2799cc | 150kW 270Nm    |       |
| E 320              | 210.055            | 1995-97 | M104.995     | (L6) 3199cc | 162kW 315Nm    |       |
| E 320              | 210.065/265        | 1997-02 | M112.941     | (V6) 3199cc | 165kW 315Nm    |       |
| E 320 4matic       | 210.082/282        | 1997-02 | M112.941     | (V6) 3199cc | 165kW 315Nm    |       |
| E 420              | 210.072/272        | 1996-98 | M119.985     | (V8) 4196cc | 205kW 400Nm    |       |
| E 430 & Guard      | 210.070/270        | 1997-02 | M113.940     | (V8) 4266cc | 205kW 400Nm    |       |
| E 430 4matic       | 210.083/283        | 1999-02 | M113.940     | (V8) 4266cc | 205kW 400Nm    |       |
| E 36 AMG           | 210.055            | 1996-98 | M104.941     | (L6) 3606cc | 207kW 385Nm    | 400   |
| E 50 AMG           | 210.072            | 1996-97 | M119.980     | (V8) 4973cc | 255kW 480Nm    | 2870  |
| E 55 AMG           | 210.074/274        | 1997-02 | M113.980     | (V8) 5439cc | 260kW 530Nm    |       |
| E 55 AMG 4matic    | 210.083            | 1999-02 | M113.980     | (V8) 5439cc | 260kW 530Nm    |       |
| E 60 AMG           | 210.072            | 1995-03 | M119.985     | (V8) 5956cc | 280kW 570Nm    |       |
| E 60 AMG 6.3       | 210.072            | 1996-   | M119.985     | (V8) 6298cc | 298kW 616Nm    |       |
| E 200 D (Portugal) | 210.003            | 1996-98 | OM604.917    | (L4) 4997cc | 65kW 135Nm     |       |
| E 220 D            | 210.004            | 1995-99 | OM604.910    | (L4) 2155cc | 70kW 150Nm     |       |
| E 200 CDI          | 210.007            | 1998-99 | OM611.960    | (L4) 2151cc | 75kW 235Nm     |       |
| E 200 CDI          | 210.007            | 1999-02 | OM611.961    | (L4) 2148cc | 85kW 250Nm     |       |
| E 220 CDI          | 210.006/206<br>606 | 1998-99 | OM611.960    | (L4) 2151cc | 92kW 300Nm     |       |
| E 220 CDI          | 210.006/206<br>606 | 1999-02 | OM611.961    | (L4) 2148cc | 105kW 315Nm    |       |
| E 250 D            | 210.010/210        | 1995-99 | OM605.912    | (L5) 2497cc | 83kW 170Nm     |       |
| E 250 TurboDiesel  | 210.015/215        | 1997-99 | OM605.962    | (L5) 2497cc | 110kW 280Nm    |       |
| E 270 CDI          | 210.016/216<br>616 | 1999-02 | OM612.961    | (L5) 2685cc | 125kW 370Nm    |       |
| E290 TurboDiesel   | 210.017/617        | 1995-99 | OM602.982    | (L5) 2874cc | 95kW 300Nm     |       |
| E 300 D            | 210.020            | 1995-97 | OM606.912    | (L6) 2996cc | 100kW 210Nm    |       |
| E 300 TurboDiesel  | 210.025/225        | 1997-99 | OM606.962    | (L6) 2996cc | 130kW 210Nm    |       |
| E 320 CDI          | 210.026/226        | 1999-02 | OM613.961    | (L5) 3222cc | 145kW 470Nm    |       |

W210 Sedan 1995 to 2002 updated September 1999, S 210 Station Wagon 1996 to 2002

Chassis codes: The Chassis code for the W210 sedan has 0 as a 4<sup>th</sup> digit. S210 station wagon has 2 as a 4<sup>th</sup> digit.

Chassis code 6 as the 4<sup>th</sup> digit indicates extended chassis

Ckd M@RS





## W 211 Sedan and S211 Station wagon

| Model             | Chassis         | Years   | Engine Code | Engine   | Power & torque |
|-------------------|-----------------|---------|-------------|--|----------------|
| E 200 Kompressor  | 211.042/242     | 2002–06 | M271.941    | 1,796 cc Supercharged L4                             | 120 kW 240 Nm  |
| E 200 Kompressor  | 211.041/241     | 2006–09 | M271.956    | 1,796 cc Supercharged L4                             | 135 kW 250 Nm  |
| E 230             | 211.052/252     | 2007-09 | M272.922    | 2,496 cc V6  | 150 kW 245 Nm  |
| E 240             | 211.061/261     | 2002-05 | M112.917    | 2,597 cc V6  | 130 kW 240 Nm  |
| E 240 4matic      | 211.080/280     | 2002-05 | M112.917    | 2,597 cc V6  | 130 kW 240 Nm  |
| E 280             | 211.054/254     | 2005-09 | M272.943    | 2,996 cc V6  | 170 kW 300 Nm  |
| E 280 4matic      | 211.092/292     | 2005-09 | M272.944    | 2,996 cc V6  | 170 kW 300 Nm  |
| E 320 & Guard     | 211.065/265     | 2002-05 | M112.949    | 3,199 cc V6  | 165 kW 315 Nm  |
| E 320 4matic      | 211.082/282     | 2003-04 | M112.954    | 3,199 cc V6  | 165 kW 315 Nm  |
| E 350 & Guard     | 211.056/256     | 2004-09 | M272.964    | 3,498 cc V6  | 200 kW 350 Nm  |
| E 350 4matic      | 211.087/287     | 2005-09 | M272.972    | 3,498 cc V6  | 200 kW 350 Nm  |
| E 350 CGI         | 211.057/257     | 2007-09 | M272.985    | 3,498 cc V6  | 215 kW 365 Nm  |
| E 500 & Guard     | 211.070/270     | 2002-06 | M113.967    | 4,966 cc V8  | 225kW 460Nm    |
| E 500 4matic      | 211.083/283     | 2003-06 | M113.969    | 4,966 cc V8  | 225kW 460Nm    |
| E 500 & Guard     | 211.072/272     | 2006-09 | M273.960    | 5,461cc V8   | 285kW 530 Nm   |
| E 500 4matic      | 211.090/290     | 2006-09 | M273.962    | 5,461cc V8   | 285kW 530 Nm   |
| E 55 AMG          | 211.076/276     | 2002-06 | M113.990    | 5,439cc Supercharged V8                              | 350kW 700Nm    |
| E 63 AMG          | 211.077/277     | 2006-09 | M156.982    | 6,208 cc V8  | 378kW 630Nm    |
| E 200 NGT         | 211.042         | 2004-09 | M271.941    | 1,796 cc Supercharged L4<br>bi fuel with natural gas | 120 kW 240 Nm  |
| E 200 CDI         | 211.004         | 2002-06 | OM646.951   | 2,148 cc L4  | 90kW 270Nm     |
| E 200 CDI         | 211.007/207     | 2006–09 | OM646.952   | 2,148 cc L4  | 100 kW 340 Nm  |
| E 220 CDI         | 211.006/206/606 | 2002–06 | OM646.961   | 2,148 cc L4  | 110 kW 340 Nm  |
| E 220 CDI         | 211.008/208/608 | 2006–09 | OM646.953   | 2,148 cc L4  | 125 kW 400 Nm  |
| E 270 CDI         | 211.016/216/616 | 2002–05 | OM647.961   | 2,685 cc L5  | 130 kW 400 Nm  |
| E 280 CDI         | 211.020/220/620 | 2005-09 | OM642.920   | 2,987 cc V6  | 140 kW 400 Nm  |
| E 280 CDI /4matic | 211.084/284     | 2005-09 | OM642.921   | 2,987 cc V6  | 140 kW 440 Nm  |
| E 280 CDI         | 211.023/223     | 2004–05 | OM648.961   | 3,222 cc I6  | 130 kW 425Nm   |
| E 300 BlueTEC     | 211.024         | 2007-09 | OM642.940   | 2,987 cc V6  | 155 kW 540 Nm  |
| E 320             | 211.022/222     | 2007-09 | OM642.940   | 2,987 cc V6  | 153kW 540Nm    |
| E 320 CDI         | 211.026/226     | 2002–06 | OM648.961   | 3,222 cc I6  | 150 kW 500 Nm  |
| E 320 CDI & Guard | 211.022/222     | 2005-09 | OM642.920   | 2,987 cc V6  | 165 kW 540Nm   |
| E 320 CDI 4matic  | 211.089/289     | 2005-09 | OM642.921   | 2,987 cc V6  | 165 kW 510Nm   |
| E 400 CDI         | 211.028         | 2003-05 | OM628.961   | 3,996 cc V8  | 191 kW 560 Nm  |
| E 420 CDI         | 211.029         | 2005-09 | OM629.910   | 3,996 cc V8  | 231 kW 730Nm   |

Chassis codes: The Chassis code for the W211 sedan has 0 as a 4<sup>th</sup> digit. S211 station wagon has 2 as a 4<sup>th</sup> digit.

Chassis code 6 as the 4<sup>th</sup> digit indicates extended chassis

E 300 BlueTEC was sold as E 320 BlueTEC in US, Canada.

E 500 was sold with 5.0L in US, Canada for 2003–2006, and as the E 550 with 5.5L after 2007.

E 280 4Matic was sold as E 300 4Matic in Canada.

E 240 was sold as E 260 in Indonesia

E 230 was sold as the E250 in Japan

E 280 was sold as the E300 in Japan

W211 Sedan 2002 to 2009 updated June 2006 S 211 Estate 2003 to 2009

Ckd M@RS



2012 update above

## W 212 Sedan and S212 Station wagon

| Model                | Chassis         | Years   | Engine Code  | Engine                      | Power & torque |
|----------------------|-----------------|---------|--------------|-----------------------------|----------------|
| E180                 | 212.040         | 2013-16 | M274.910     | 1,595cc turbo L4            | 115 kW 270 Nm  |
| E180 L               | 212.133         | 2014-16 | M274.920     | 1,991cc turbo L4            | 115 kW 270 Nm  |
| E 200 CGI            | 212.048/148/248 | 2009-13 | M271.820/860 | 1,796cc turbo L4            | 135 kW 270 Nm  |
| E 200                | 212.034/134/234 | 2013-16 | M274.920     | 1,991cc turbo L4            | 135 kW 300 Nm  |
| E 200 NGD            | 212.035         | 2013-16 | M274.920     | 1,991cc turbo L4            | 115 kW 270 Nm  |
| E 200 NGT            | 212.041         | 2009-13 | M271.958     | 1,796cc turbo L4            | 120kW 240Nm    |
| E 250                | 212.036/236     | 2013-16 | M274.920     | 1,991cc turbo L4            | 155kW 350Nm    |
| E 250                | 212.052         | 2009-13 | M272.923     | M272 E25 V6                 |                |
| E 250 CGI            | 212.047/247     | 2009-13 | M271.860     | 1,796cc turbo L4            | 150 kW 310 Nm  |
| E 260 L              | 212.136         | 2014-16 | M274.920     | 1,991 cc turbo L4           |                |
| E 260 CGI L          | 212.147         | 2009-   | M271.860     | 1,796cc turbo L4            | 150 kW 310 Nm  |
| E 300                | 212.053         | 2009-11 | M272.980     | 2,996cc V6                  | 170kW 300Nm    |
| E 300                | 212.054/154/254 | 2009-   | M272.952     | M272 E30 V6                 |                |
| E 300                | 212.055/255     | 2011-16 | M276.952     | 3,498cc V6                  | 185 kW 300 Nm  |
| E 300 4Matic         | 212.080/280     | 2011-16 | M276.952     | 3,498cc V6                  | 185 kW 300 Nm  |
| E 320 L              | 212.162         | 2014-16 | M276.820     | 2,996cc V6                  |                |
| E 320 L 4matic       | 212.168         | 2014-16 | M276.820     | 2,996cc V6                  |                |
| E 350 CGI            | 212.057/257     | 2009-11 | M272.983     | 3,498cc V6                  | 215 kW 365 Nm  |
| E 350                | 212.056/256     | 2009-11 | M272.980/977 | 3,498cc V6                  | 200 kW 350 Nm  |
| E 350 4Matic         | 212.087/287     | 2009-11 | M272.980/977 | 3,498cc V6                  | 200 kW 350 Nm  |
| E 350                | 212.059/259     | 2011-16 | M276.952     | 3,498cc V6                  | 225 kW 370 Nm  |
| E 350 4Matic         | 212.088/288     | 2011-16 | M276.952     | 3,498cc V6                  | 225 kW 370 Nm  |
| E 400                | 212.065/165/265 | 2013-14 | M276.820     | 2,996cc V6                  | 245 kW         |
| E 400 4matic         | 212.067/167/267 | 2014-16 | M276.820     | 2,996cc V6                  | 245 kW         |
| E 400                | 212.061/261     | 2014-16 | M276.850     | 3,498cc V6                  | 245 kW         |
| E 4004matic          | 212.099/299     | 2014-16 | M276.850     | 3,498cc V6                  | 245 kW         |
| E 400 HYBRID         | 212.095/195     | 2015-16 | M276.950     | 3,498cc V6 + electric motor | 245 kW 620 Nm  |
| E 500                | 212.072/272     | 2009-11 | M273.971     | 5,461cc V8                  | 285 kW 530 Nm  |
| E 500 4Matic         | 212.090         | 2009-11 | M273.971     | 5,461cc V8                  | 285 kW 530 Nm  |
| E 500                | 212.073/273     | 2011-16 | M278.922     | 4,663cc twin-turbo V8.      | 300 kW 600 Nm  |
| E 500 4Matic         | 212.091/291     | 2011-16 | M278.922     | 4,663cc twin-turbo V8.      | 300 kW 600 Nm  |
| E 63 AMG             | 212.077/277     | 2009-11 | M156 E63     | 6,208cc V8                  | 386 kW 630 Nm  |
| E 63 AMG             | 212.074/274     | 2011-   | M157.981     | 5,461cc twin-turbo V8       | 386 kW 700 Nm  |
| E 63 AMG             | 212.074/274     | 2011-   | M157.981     | 5,461cc twin-turbo V8       | 410 kW 720 Nm  |
| E 63 AMG 4matic      | 212.092/292     | 2011-   | M157.981     | 5,461cc twin-turbo V8       | 410 kW 720 Nm  |
| E 63 AMG S           | 212.075/275     | 2013-   | M157.981     | 5,461cc twin-turbo V8       | 430 kW 800 Nm  |
| E 63 AMG S 4matic    | 212.076/276     | 2013-   | M157.981     | 5,461cc twin-turbo V8       | 430 kW 800 Nm  |
| E 200 CDI            | 212.005/205     | 2009-16 | OM651.925    | 2,143cc L4                  | 100 kW 360 Nm  |
| E 200 BlueTEC        | 212.006/206     | 2009-16 | OM651.925    | 2,143cc L4                  | 100 kW 360 Nm  |
| E 220 BlueTEC        | 212.001/201     | 2009-16 | OM651.924    | 2,143cc L4                  | 125 kW         |
| E 220 BlueTEC 4matic | 212.011/211     | 2009-16 | OM651.924    | 2,143cc L4                  | 125 kW         |
| E 220 CDI            | 212.002/202     | 2009-16 | OM651.924    | 2,143cc L4                  | 125 kW         |
| E 250 CDI            | 212.003/203     | 2009-16 | OM651.924    | 2,143cc L4                  | 150 kW 500 Nm  |
| E 250 CDI 4matic     | 212.082/282     | 2009-16 | OM651.924    | 2,143cc L4                  | 150 kW 500 Nm  |
| E 250 BlueTEC        | 212.004/204     | 2009-16 | OM651.924    | 2,143cc L4                  | 150 kW 500 Nm  |
| E 250 BlueTEC 4matic | 212.097/297     | 2009-16 | OM651.924    | 2,143cc L4                  | 150 kW 500 Nm  |
| E 300 BlueTEC        | 212.098/298     | 2012-16 | OM651.924    | 2,143cc L4                  | 150 kW 700Nm   |
| HYBRID               |                 |         |              |                             |                |
| E 300 CDI            | 212.020/220     | 2009-10 | OM642.850    | 2,987cc V6                  | 150 kW 500 Nm  |

|                      |             |         |               |            |               |
|----------------------|-------------|---------|---------------|------------|---------------|
| E 300 CDI            | 212.021/221 | 2011-16 | OM642 850     | 2,987cc V6 | 170 kW 540 Nm |
| E 300 CDI            | 212.025/225 | 2009-10 | OM642.850     | 2,987cc V6 | 170 kW 540 Nm |
| E 300 BlueTEC        | 212.027/227 | 2011-16 | OM642 852     | 2,987cc V6 | 170 kW 540 Nm |
| E 350 BlueTEC        | 212.024/224 | 2009-16 | OM642.850     | 2,987cc V6 | 155 kW 540 Nm |
| E 350 BlueTEC        | 212.026/226 | 2014-16 | OM642.852/858 | 2,987cc V6 | 190 kW        |
| E 350 BlueTEC 4matic | 212.094/294 | 2014-16 | OM642.852/858 | 2,987cc V6 | 190 kW        |
| E 350 CDI            | 212.025     | 2009-10 | OM642.850/856 | 2,987cc V6 | 170 kW 540 Nm |
| E 350 CDI 4matic     | 212.089/289 | 2009-10 | OM642.850/856 | 2,987cc V6 | 170 kW 540 Nm |
| E 350 CDI            | 212.023/223 | 2010-16 | OM642.852/858 | 2,987cc V6 | 195 kW 620 Nm |
| E 350 CDI 4Matic     | 212.093/293 | 2010-16 | OM642.852/858 | 2,987cc V6 | 195 kW 620 Nm |

W212 Sedan 2009 to 2016 and S 212 Station wagon 2009 to 2016

Chassis codes: The Chassis code for the W212 sedan has 0 as a 4<sup>th</sup> digit. S212 station wagon has 2 as a 4<sup>th</sup> digit.

Chassis codes with 1 as the 4<sup>th</sup> digit indicates long wheelbase



## W 213 Sedan and S213 Station wagon

| Model            | Chassis         | Years   | Engine Code | Engine                       | Power & torque         |
|------------------|-----------------|---------|-------------|------------------------------|------------------------|
| E180             | 213.040/140     | 2017-   | M274.910    | 1991 cc L4                   | 115 kW                 |
| E 200            | 213.042/142/242 | 2016-   | M274.920    | 1991 cc L4                   | 135 kW 300 Nm          |
| E 200 4matic     | 213.043/143/243 | 2016-   | M274.920    | 1991 cc L4                   | 135 kW 300 Nm          |
| E 250            | 213.045/245     | 2016-   | M274 920    | 1991 cc L4                   | 155 kW 350 Nm          |
| E 300            | 213.048/148     | 2016-   | M274.920    | 1991 cc L4                   | 180 kW 370 Nm          |
| E 300 4matic     | 213.049         | 2016-   | M274.920    | 1991 cc L4                   | 180 kW 370 Nm          |
| E 300 e          | 213.053         | 2018-   | M274.920    | 1991 cc L4 + electric motor  | 236 kW 700 Nm combined |
| E 320 L 4matic   | 213.163         | 2016-   | M276.823    | 2996 cc V6                   | 270kW 500 Nm           |
| E 350 e          | 213.050         | 2016-18 | M274.920    | 1991 cc L4 + electric motor  | 210 kW 550 Nm combined |
| E 400 4matic     | 213.066/266     | 2018-   | M276.823    | 2996 cc V6                   | 270kW 500 Nm           |
| E 400 4matic     | 213.071/271     | 2016-18 | M276.853    | 3498 cc V6                   | 245 kW 480 Nm          |
| E 450 4matic     | 213.068         | 2018-   | M276.823    | 2996 cc V6                   | 270 kW 500 Nm          |
| E 450 4matic     | 213.072         |         |             |                              |                        |
| AMG E 43 4matic  | 213.064/264     | 2016-18 | M276.823    | 2996 cc V6                   | 295 kW 521 Nm          |
| AMG E 53         | 213.061         | 2018-   | M256.930    | 2999 cc L6 + 48V Mild Hybrid | 320+16 kW 520 Nm       |
| AMG E63          | 213.088/288     | 2016-   | M177.980    | 3982 cc V8                   | 420 kW 750 Nm          |
| AMG E63 S 4matic | 213.089/289     | 2016-   | M177.980    | 3982 cc V8                   | 450 kW 850 Nm          |
| E200d            | 213.012         |         | OM654.916   |                              |                        |
| E200d            | 213.013/213     | 2016-   | OM654.920   | 1950 cc L4                   | 110 Kw 360 Nm          |
| E220d            | 213.004/104/204 | 2016-   | OM654.920   | 1950 cc L4                   | 143 kW 400 Nm          |
| E220d 4matic     | 213.005/205/217 | 2016-   | OM654.920   | 1950 cc L4                   | 143 kW 400 Nm          |
| E300d            | 213.008/108/208 | 2018-   | OM654.920   | 1950 cc L4                   | 180 kW 500 Nm          |
| E300de           | 213.016         | 2018-   | OM654.920   | 1950 cc L4+ electric motor   | 225kW 700 Nm combined  |
| E350d            | 213.031         |         | OM642.855   | 2987 cc V6                   | 190 kW 620 Nm          |
| E350d            | 213.033/233     | 2016-18 | OM642.855   | 2987 cc V6                   | 190 kW 620 Nm          |
| E350d 4matic     | 213.237         |         | OM642.855   | 2987 cc V6                   | 190 kW 620 Nm          |
| E350d 4matic     | 213.034/234     | 2016-18 | OM642.873   | 2987 cc V6                   | 190 kW 620 Nm          |
| E350d            | 213.022         | 2018-   | OM656 929   | 2925 cc L6                   | 210 kW 600 Nm          |
| E400d            | 213.020         | 2018-   | OM656 929   | 2925 cc L6                   | 250 kW 700 Nm          |
| E400d 4Matic     | 213.023         | 2018-   | OM656       | 2925 cc L6                   | 250 kW 700 Nm          |

Chassis codes: The Chassis code for the W213 sedan has 0 as a 4<sup>th</sup> digit. S213 station wagon has 2 as a 4<sup>th</sup> digit.

Chassis codes with 1 as the 4<sup>th</sup> digit indicates long wheelbase



## CLK-CLASS AND E-CLASS COUPÉ AND CABRIOLET



### CLK C208 coupé and A208 Cabriolet

| Model             | Chassis     | Years   | Engine Code | Engine                  | Power & torque |
|-------------------|-------------|---------|-------------|-------------------------|----------------|
| CLK200            | 208.335/435 | 1997-02 | M111.945    | 2.0 16V L4              | 100Kw 190Nm    |
| CLK200 Kompressor | 208.344/444 | 2000-02 | M111.956    | 2.0 16V supercharged L4 | 120kW 230Nm    |
| CLK200 Kompressor | 208.345/445 | 1997-00 | M111.944    | 2.0 16V supercharged L4 | 142kW 280Nm    |
| CLK230 Kompressor | 208.348/448 | 2000-02 | M111.982    | 2.3 16V supercharged L4 | 145kW 280Nm    |
| CLK230 Kompressor | 208.347/447 | 1997-00 | M111.975    | 2.3 16V supercharged L4 | 142kW 280Nm    |
| CLK320            | 208.365/465 | 1997-02 | M112.940    | 3.2 18V V6              | 165kW 315Nm    |
| CLK430            | 208.370/470 | 1999-02 | M113.943    | 4.3 24V V8              | 205kW 400Nm    |
| CLK55 AMG         | 208.374/474 | 2000-02 | M113.984    | 5.4 24V V8              | 255kW 510Nm    |

Unless otherwise shown C208 production was 1997 to 2002 and A208 production was 1999 to 2003

Chassis Codes: Convertible/Cabriolet has 4 as the 4<sup>th</sup> digit. Coupe has 3 as the 4<sup>th</sup> digit

Ckd M@RS



### CLK C209 coupé and A209 Cabriolet

| Model             | Chassis     | Years   | Engine Code | Engine      | Power & torque | Prodn |
|-------------------|-------------|---------|-------------|-------------|----------------|-------|
| CLK200 Kompressor | 209.342/442 | 2002–06 | 271.940     | 1,796 cc L4 | 120 kW 240 Nm  |       |
| CLK200 Kompressor | 209.341/441 | 2006–10 | 271.950     | 1,796 cc L4 | 135 kW 240 Nm  |       |
| CLK200 CGI        | 209.343     | 2003–05 | 271.942     | 1,796 cc L4 | 125 kW 250 Nm  |       |
| CLK240            | 209.361/461 | 2002–05 | 112.912     | 2597cc V6   | 125 kW 240 Nm  |       |
| CLK280            | 209.354/454 | 2005–10 | 272.940     | 2996cc V6   | 170 kW 300 Nm  |       |
| CLK320            | 209.365/465 | 2002–05 | 112.955     | 3199cc V6   | 160 kW 310 Nm  |       |
| CLK350            | 209.356/456 | 2005–10 | 272.960     | 3498cc V6   | 200 kW 350 Nm  |       |
| CLK500            | 209.375/575 | 2002–06 | 113.968     | 4966cc V8   | 225 kW 460 Nm  |       |
| CLK500            | 209.372/472 | 2006–10 | 273.965     | 5461cc V8   | 285 kW 530 Nm  |       |
| CLK55 AMG         | 209.376/476 | 2002–06 | 113.987     | 5439cc V8   | 270 kW 510 Nm  |       |
| CLK63 AMG         | 209.377/477 | 2006–10 | 156.982     | 6208cc V8   | 354 kW 630 Nm  |       |
| CLK220 CDI        | 209.308     | 2005–09 | 646.963     | 2148 cc L4  | 110 kW 340 Nm  |       |
| CLK270 CDI        | 209.316     | 2002–05 | 612.967     | 2,685 cc L5 | 130 kW 400 Nm  |       |
| CLK320 CDI        | 209.320/420 | 2005–10 | 642.910     | 2,987 cc V6 | 165 kW 510 Nm  |       |

General C209 production was 2002 to 2009, A209 was 2003 to 2010

Chassis Codes: Convertible/Cabriolet has 4 as the 4<sup>th</sup> digit. Coupe has 3 as the 4<sup>th</sup> digit

Ckd M@RS



## E-Class C207 coupé and A207 Cabriolet

| Model        | Chassis     | Years   | Engine Code  | Engine               | Power & torque | Prodn |
|--------------|-------------|---------|--------------|----------------------|----------------|-------|
| E200 CGI     | 207.348/448 | 2010–13 | M271.820/860 | 1796cc L4 turbo      | 135 kW 270 Nm  |       |
| E200         | 207.334/434 | 2013–17 | M274.920     | 1991cc L4 turbo      | 135 kW 300 Nm  |       |
| E250 CGI     | 207.347/447 | 2009–11 | M271.860     | 1796cc L4 turbo      | 150 kW 310 Nm  |       |
| E250         | 207.336/436 | 2013–17 | M274.920     | 1991cc L4 turbo      | 155 kW 350 Nm  |       |
| E300         | 207.355/455 | 2011–17 | M276.957     | 3499cc V6            | 185 kW 340 Nm  |       |
| E320         | 207.362/462 | 2014-17 | M276.820     | 3499cc V6            | 200kW          |       |
| E350 CGI     | 207.357/457 | 2009–11 | M272.982/984 | 3498cc V6            | 215 kW 365 Nm  |       |
| E350         | 207.359/459 | 2011–17 | M276.957     | 3499cc V6            | 225 kW 370 Nm  |       |
| E350 4matic  | 207.388     | 2011–17 | M276.957     | 3499cc V6            | 225 kW 370 Nm  |       |
| E350         | 207.356/456 | 2011-17 | M272.961/988 | 3498cc V6            | 200 kW         |       |
| E350         | 207.360/460 |         | M276.850     |                      |                |       |
| E400         | 207.365/465 |         | M276.820     | 3.0 L V6 twin-turbo  |                |       |
| E400         | 207.361/461 | 2013–17 | M276.820     | 3.0 L V6 twin-turbo  | 245 kW 480 Nm  |       |
| E400 4matic  | 207.367     | 2013–17 | M276.820     | 3.0 L V6 twin-turbo  | 245 kW 480 Nm  |       |
| E500         | 207.372/472 | 2009–11 | M273.966     | 5461cc V8            | 285 kW 530 Nm  |       |
| E550 CGI     | 207.373/473 | 2011–17 | M278.922     | 4663cc V8 twin-turbo | 300 kW 600 Nm  |       |
| E220 CDI     | 207.302/402 | 2010-17 | OM651.911    | 2143cc L4 twin-turbo | 120 kW         |       |
| E220 BlueTEC | 207.301/401 | 2010-17 | OM651.911    | 2143cc L4 twin-turbo | 130 kW         |       |
| E250 CDI     | 207.303/403 | 2009–17 | OM651.911    | 2143cc L4 twin-turbo | 150 kW 500 Nm  |       |
| E250 BlueTEC | 207.304/404 | 2009–17 | OM651.911    | 2143cc L4 twin-turbo |                |       |
| E350 CDI     | 207.322/422 | 2011–17 | OM642.836    | 2987cc V6 turbo      | 195 kW 620 Nm  |       |
| E350 CDI     | 207.323/423 | 2013-14 | OM642.838    | 2987cc V6 turbo      | 185 kW         |       |
| E350 BlueTEC | 207.326/426 | 2014-17 | OM642.838    | 2987cc V6 turbo      | 190kW          |       |

General production C207 Coupé 2009 to 2017 and A207 Cabriolet 2010 to 2017

Chassis Codes: Convertible/Cabriolet has 4 as the 4<sup>th</sup> digit. Coupe has 3 as the 4<sup>th</sup> digit



## E-Class C238 Coupé and A238 Cabriolet

| Model         | Chassis     | Years   | Engine Code | Engine                  | Power & torque    |
|---------------|-------------|---------|-------------|-------------------------|-------------------|
| E 200         | 238.342/442 | 2017-18 | M274.920    | 1991 cc L4              | 135kW 300Nm       |
| E 200 4matic  | 238.343/443 | 2017-18 | M274.920    | 1991 cc L4              | 135kW 300Nm       |
| E 300         | 238.348/448 | 2017-   | M274.920    | 1991 cc L4              | 180kW 370Nm       |
| E350 EQ boost | 238.385/485 | 2017-   | M264.920    | 1991cc L4 turbo         | 220 kW 400Nm      |
| E 400 4matic  | 238.366/466 | 2017-18 | M276.823    | 2996 cc V6 twin turbo   | 245kW 480Nm       |
| E 450 4matic  | 238.368/468 | 2018-   | M276.823    | 2996 cc V6 twin turbo   | 270kW 500Nm       |
| AMG E 53      | 238.361/461 | 2018-   | M256.930    | 2999 cc L6 + 48V Hybrid | 320 + 16 kW 520Nm |

|              |             |       |           |                 |               |
|--------------|-------------|-------|-----------|-----------------|---------------|
| E220d        | 238.314/414 | 2016- | OM654.920 | 1950 cc L4      | 143 kW 400Nm  |
| E220d 4matic | 238.315/415 | 2016- | OM654.920 | 1950 cc L4      | 143 kW 400Nm  |
| E300d        | 238.318/418 | 2018- | OM654.920 | 1950 cc L4      | 180 kW        |
| E350d        | 238.320     | 2018- | OM656.929 | 2925cc L6 turbo | 210 kW 600 Nm |
| E350d 4matic | 238.334/434 | 2017- | OM642.873 | 2987cc V6 turbo | 190 kW 620Nm  |
| E400d 4matic | 238.323/423 | 2018- | OM656.929 | 2925cc L6 turbo | 250 kW 700 Nm |

Chassis Codes: Convertible/Cabriolet has 4 as the 4<sup>th</sup> digit. Coupe has 3 as the 4<sup>th</sup> digit

## CLS-CLASS



### W219 4 door Coupé

| Model                | Chassis | Years   | Engine Code | Engine                | Power & torque | Prodn |
|----------------------|---------|---------|-------------|-----------------------|----------------|-------|
| <b>CLS280</b>        | 219.354 | 2008–09 | M272.943    | 3.0 L V6              | 170 kW 300 Nm  |       |
| <b>CLS300</b>        | 219.354 | 2009–10 | M272.943    | 3.0 L V6              | 170 kW 300 Nm  |       |
| <b>CLS350</b>        | 219.356 | 2004–06 | M272.964    | 3.5 L V6              | 200 kW 350 Nm  |       |
| <b>CLS350 CGI</b>    | 219.357 | 2006–10 | M272.985    | 3.5 L V6              | 215 kW 365 Nm  |       |
| <b>CLS500</b>        | 219.375 | 2004–06 | M113.967    | 5.0 L V8              | 225 kW 460 Nm  |       |
| <b>CLS500</b>        | 219.372 | 2007–10 | M273.960    | 5.5 L V8              | 285 kW 530Nm   |       |
| <b>CLS55 AMG</b>     | 219.376 | 2004–10 | M113.990    | 5.4 L V8 supercharged | 350 kW 700 Nm  |       |
| <b>CLS63 AMG</b>     | 219.377 | 2006–10 | M156.983    | 6.2 L V8              | 378 kW 630 Nm  |       |
| <b>CLS320 CDI</b>    | 219.322 | 2005–10 | OM642.920   | 3.0 L V6 turbo        | 165 kW 510 Nm  |       |
| <b>CLS350 CDI</b>    | 219.322 | 2007–10 | OM642.920   | 3.0 L V6 turbo        | 165 kW 540 Nm  |       |
| <b>CLS350 CDI</b>    | 219.322 | 2009-10 | OM642.920   | 3.0 L V6 turbo        | 203 kW 590 Nm  |       |
| <b>Grand Edition</b> |         |         |             |                       |                |       |

Ckd M@RS





## C218 4 door Coupé and X218 Shooting Break

| Model                 | Chassis     | Years   | Engine Code | Engine               | Power & torque |
|-----------------------|-------------|---------|-------------|----------------------|----------------|
| CLS260                | 218.336/936 | 2015-   | M274.920    | 1991cc L4 turbo      | 155kW 350Nm    |
| CLS300                | 218.355     | 2012-   | M276.952/7  | 3499cc V6            | 185kW 340Nm    |
| CLS320                | 218.362/962 | 2015-   | M276.820    | 3499cc V6            | 200 kW         |
| CLS350 CGI            | 218.359/959 | 2010–14 | M276.952    | 3499cc V6            | 225 kW 370 Nm  |
| CLS400                | 218.361/961 | 2014–17 | M276.850    | 3499cc V6            | 245 kW 480 Nm  |
| CLS400                | 218.365/965 |         | M276.820    | 2996cc V6            | 245 kW 480 Nm  |
| CLS400 4matic         | 218.367/967 |         | M276.820    | 2996cc V6            | 245 kW 480 Nm  |
| CLS400 4matic         | 218.368/968 | 2014–17 | M276.850    | 3499cc V6            | 245kW 480Nm    |
| CLS500                | 218.373/973 | 2010–17 | M278.922    | 4663cc V8 twin-turbo | 300 kW 600 Nm  |
| CLS500 4matic         | 218.391/991 | 2010–17 | M278.922    | 4663cc V8 twin-turbo | 300 kW 600 Nm  |
| CLS63 AMG             | 218.374/974 | 2010–13 | M157.980    | 5461cc V8 twin-turbo | 386 kW 700 Nm  |
| CLS63 AMG/4matic      | 218.392/992 | 2010–13 | M157.981    | 5461cc V8 twin-turbo | 410 kW 720 Nm  |
| CLS63 AMG S           | 218.375/975 | 2013–17 | M157.981    | 5461cc V8 twin-turbo | 430 kW 800 Nm  |
| CLS63 AMG S 4matic    | 218.376/976 | 2013–17 | M157.981    | 5461cc V8 twin-turbo | 430 kW 800 Nm  |
| CLS220 BlueTEC        | 218.301/901 | 2014–17 | OM651.924   | 2143cc L4 turbo      | 125 kW 400 Nm  |
| CLS250 CDI            | 218.303/903 | 2010–14 | OM651.924   | 2143cc L4 twin-turbo | 150 kW 500 Nm  |
| CLS250 BlueTEC        | 218.304/904 | 2010–14 | OM651.924   | 2143cc L4 twin-turbo | 150 kW 500 Nm  |
| CLS250 BlueTEC/4matic | 218.397/997 | 2014–17 | OM651.924   | 2143cc L4 twin-turbo | 150 kW 500 Nm  |
| CLS350 CDI            | 218.323/923 | 2010–14 | OM642.852   | 2987cc V6 turbo      | 195 kW 620 Nm  |
| CLS350 CDI 4matic     | 218.393/993 | 2010–14 | OM642.854   | 2987cc V6 turbo      | 195 kW 620 Nm  |
| CLS350 BlueTEC        | 218.326/926 | 2014–17 | OM642.852   | 2987cc V6 turbo      | 190 kW 620 Nm  |
| CLS350 BlueTEC 4matic | 218.394/994 | 2014–17 | OM642.854   | 2987cc V6 turbo      | 190 kW 620 Nm  |

Generally C218 4 door coupé produced from 2010-2018 and X218 shooting brake from 2012-2017  
 Chassis Codes: Shooting Brake has 9 as the 4<sup>th</sup> digit. Coupe has 3 as the 4<sup>th</sup> digit



## C-CLASS



### W201 Sedans

| Chassis     | Engine  | Model                    | Years   | kW      | Production |
|-------------|---------|--------------------------|---------|---------|------------|
| 201.022     | 102.921 | 190                      | 1982-84 | 66      | 35,021     |
| 201.023     | 102.924 | 190                      | 1984-91 | 77      | 83,540     |
| 201.024     | 102.962 | 190E/190E 2.0            | 1982-93 | 90      | 638,180    |
| 201.028/024 | 102.985 | 190E 2.3                 | 1983-93 | 100     | 186,610    |
| 201.034     | 102.983 | 190E 2.3-16              | 1983-88 | 136/130 | 19,487     |
| 201.035     | 102.990 | 190E 2.5-16              | 1988-93 | 143     | 5,743      |
| 201.036     | 102.991 | 190E 2.5-16 Evolution I  | 1989    | 143     | 502        |
| 201.036     | 102.992 | 190E 2.5-16 Evolution II | 1990    | 173     | 502        |
| 201.029     | 103.942 | 190E 2.6                 | 1986-93 | 122     | 104,907    |
| 201.018     | 102.910 | 190E 1.8                 | 1990-93 | 80      | 173,354    |
| 201.122     | 601.911 | 190D                     | 1982-93 | 53      | 452,806    |
| 201.122     | 601.921 | 190D 2.2                 | 1983-86 | 54      | 10,560     |
| 201.126     | 602.911 | 190D 2.5                 | 1984-93 | 66      | 147,502    |
| 201.128     | 602.961 | 190D 2.5 Turbo           | 1986-93 | 90      | 20,915     |



### W202 Sedans

| Chassis | Engine       | Model           | Years   | kW      | Production   |
|---------|--------------|-----------------|---------|---------|--------------|
| 202.018 | 111.920/921  | C180            | 1992-00 | 90      | 583,514      |
| 202.020 | 111.941/945  | C200            | 1993-00 | 100     | 193,514      |
| 202.025 | 111.944      | C200 Kompressor | 1995-00 | 132/141 | 12,344       |
| 202.022 | 111.961      | C220            | 1992-96 | 110     | 140,915      |
| 202.023 | 111.974      | C230            | 1995-98 | 110     | 59,706       |
| 202.024 | 111.975/973  | C230 Kompressor | 1995-00 | 142     | 63,595       |
| 202.026 | 112.910      | C240            | 1997-00 | 125     | 40,878       |
| 202.028 | 104.941      | C280            | 1992-97 | 142     | 103,374      |
| 202.029 | 112.920 (V6) | C280            | 1996-00 | 145     | 40,146       |
| 202.028 | 104.9936     | C36 AMG         | 1993-97 | 206     | 5,221        |
| 202.033 | 113.944      | C43 AMG         | 1997-00 | 225     | 3,085        |
| 202.033 | 113.983      | C55 AMG         | 1998-00 | 255     | Not recorded |

## W202 Diesel Sedans

| Chassis | Engine  | Model            | Years   | kW  | Production |
|---------|---------|------------------|---------|-----|------------|
| 202.120 | 601.913 | C200 Diesel      | 1992-95 | 55  | 39,207     |
| 202.122 | 604.915 | C200 Diesel      | 1996-99 | 65  | 1,063      |
| 202.134 | 611.960 | C200 CDI         | 1998-00 | 75  | 29,811     |
| 202.121 | 604.910 | C220 Diesel      | 1992-99 | 70  | 146,193    |
| 202.133 | 611.960 | C220 CDI         | 1997-00 | 92  | 58,951     |
| 202.125 | 605.910 | C250 Diesel      | 1992-96 | 83  | 44,801     |
| 202.128 | 605.960 | C250 Turbodiesel | 1995-00 | 110 | 59,772     |

## S202 Station Wagons

| Chassis | Engine       | Model             | Years   | kW      | Production   |
|---------|--------------|-------------------|---------|---------|--------------|
| 202.078 | 111.921      | C180 T            | 1995-00 | 90      | 69,242       |
| 202.081 | 111.952      | C180 2 litre T    | 2000-01 | 95      | 2,295        |
| 202.080 | 111.945      | C200 T            | 1995-00 | 100     | 24,634       |
| 202.082 | 111.944      | C200 Kompressor T | 1996-00 | 132/141 | 4,636        |
| 202.087 | 111.956      | C200 Kompressor T | 2000-01 | 120     | 4,605        |
| 202.083 | 111.974      | C230 T            | 1995-98 | 110     | 6,299        |
| 202.085 | 111.973      | C230 Kompressor T | 1996-00 | 142     | 2,483        |
| 202.086 | 112.910      | C240 T            | 1996-00 | 125     | 14,803       |
| 202.088 | 112.950      | C240 T (2.6)      | 2000-01 | 125     | 1,651        |
| 202.089 | 112.920 (V6) | C280 T            | 1996-00 | 145     | 2,823        |
| 202.093 | 113.944      | C43 AMG T         | 1997-00 | 225     | 772          |
| 202.093 | 113.983      | C55 AMG T         | 1998-00 | 255     | Not recorded |



## S202 Diesel Station Wagons

| Chassis | Engine  | Model              | Years   | KW  | Production |
|---------|---------|--------------------|---------|-----|------------|
| 202.182 | 604.915 | C200 Diesel        | 1995-98 | 65  | 174        |
| 202.194 | 611.960 | C200 CDI T         | 1998-01 | 75  | 18,117     |
| 202.182 | 604.910 | C220 Diesel T      | 1995-99 | 70  | 17,988     |
| 202.193 | 611.960 | C220 CDI T         | 1997-01 | 92  | 50,104     |
| 202.188 | 605.960 | C250 Turbodiesel T | 1995-00 | 110 | 23,245     |



## W203 Sedan and S203 Station wagon

| Model               | Chassis     | Years   | Engine Code  | Engine          | Power & torque | Prodn |
|---------------------|-------------|---------|--------------|-----------------|----------------|-------|
| <b>C 180</b>        | 203.035/235 | 2000-02 | M111.951     | 1,998 cc 16V L4 | 95 kW 190 Nm   |       |
| <b>C 180</b>        | 203.046/246 | 2002-06 | M271.946     | 1,796 cc 16V L4 | 105 kW 220 Nm  |       |
| <b>Kompressor</b>   |             |         |              | supercharged    |                |       |
| <b>C 200</b>        | 203.045/245 | 2000-02 | M111.955     | 1,998 cc 16V L4 | 120 kW 230 Nm  |       |
| <b>Kompressor</b>   |             |         |              | Supercharged    |                |       |
| <b>C 200</b>        | 203.042/242 | 2002-06 | M271.940     | 1,796 cc 16V L4 | 120 kW 240 Nm  |       |
| <b>Kompressor</b>   |             |         |              | supercharged    |                |       |
| <b>C 200 CGI</b>    | 203.043/243 | 2000-06 | M271.942     | 1,796 cc 16V L4 | 125 kW, 250 Nm |       |
|                     |             |         |              | supercharged    |                |       |
| <b>C 230</b>        | 203.040/240 | 2000-06 | M271.948     | 1,796 cc 16V L4 | 141 kW, 260 Nm |       |
| <b>Kompressor</b>   |             |         |              | supercharged    |                |       |
| <b>C 230</b>        | 203.052/252 | 2004-06 | M272.920     | 2,496 cc 24V V6 | 150 kW, 245 Nm |       |
| <b>C 240</b>        | 203.061/261 | 2000-04 | M112.912/916 | 2,597 cc 18V V6 | 127 kW, 240 Nm |       |
| <b>C 240 4matic</b> | 203.081/281 | 2000-04 | M112.912/916 | 2,597 cc 18V V6 | 127 kW, 240 Nm |       |
| <b>C 280</b>        | 203.054/254 | 2004-06 | M272.940/941 | 2,997 cc 24V V6 | 170 kW, 300 Nm |       |
| <b>C 280 4matic</b> | 203.092/292 | 2004-06 | M272.940/941 | 2,997 cc 24V V6 | 170 kW, 300 Nm |       |
| <b>C 320</b>        | 203.064/264 | 2000-04 | M112.946/953 | 3,199 cc 18V V6 | 160 kW, 310 Nm |       |
| <b>C 320 4matic</b> | 203.084/284 | 2000-04 | M112.946/953 | 3,199 cc 18V V6 | 160 kW, 310 Nm |       |
| <b>C 350</b>        | 203.056/256 | 2004-06 | M272.960/970 | 3,498 cc 24V V6 | 200 kW, 350 Nm |       |
| <b>C 350 4matic</b> | 203.087/287 | 2004-06 | M272.960/970 | 3,498 cc 24V V6 | 200 kW, 350 Nm |       |
| <b>C 32 AMG</b>     | 203.065/265 | 2001-06 | M112.961     | 3,199 cc 18V V6 | 260 kW 450 Nm  |       |
| <b>Kompressor</b>   |             |         |              | supercharged    |                |       |
| <b>C 55 AMG</b>     | 203.076/276 | 2004-06 | M113.988     | 5,439 cc 24V V8 | 270 kW, 510 Nm |       |
| <b>C 200 CDI</b>    | 203.004/204 | 2000-06 | OM611.962    | 2,148 cc 16V L4 | 75 kW, 235 Nm  |       |
|                     |             |         |              | turbo           |                |       |
| <b>C 200 CDI</b>    | 203.004/204 | 2000-06 | OM611.962    | 2,148 cc 16V L4 | 85 kW, 250 Nm  |       |
|                     |             |         |              | turbo           |                |       |
| <b>C 200 CDI</b>    | 203.007/207 | 2000-06 | OM646.962/3  | 2,148 cc 16V L4 | 90 kW, 270 Nm  |       |
|                     |             |         |              | turbo           |                |       |
| <b>C 220 CDI</b>    | 203.006/206 | 2000-06 | OM611.962    | 2,148 cc 16V L4 | 105 Kw,315 Nm  |       |
|                     |             |         |              | turbo           |                |       |
| <b>C 220 CDI</b>    | 203.008/208 | 2000-06 | OM646.963    | 2,148 cc 16V L4 | 110 kW, 340 Nm |       |
|                     |             |         |              | turbo           |                |       |
| <b>C 270 CDI</b>    | 203.016/216 | 2000-06 | OM612.962    | 2,685 cc 20V L5 | 120 kW, 370 Nm |       |
|                     |             |         |              | turbo           | 125 kW, 400 Nm |       |
| <b>C 320 CDI</b>    | 203.020/220 | 2000-06 | OM642.910    | 2,987 cc 24V V6 | 165 kW, 415 Nm |       |
|                     |             |         |              | turbo           | 165 kW, 510 Nm |       |
| <b>C 30 CDI AMG</b> | 203.018/218 | 2004-06 | OM612.990    | 2,950 cc 20V L5 | 170 kW, 540 Nm |       |
|                     |             |         |              | turbo           |                |       |

Engine code: Station wagon has 2 as the 4<sup>th</sup> digit sedan has 0  
 General production was from 2000-06





CL203 coupé 2001 to 2008



CLC 2008 to 2011

## CL203 Sports Coupé and CLC-Class

| Model                       | Chassis | Years   | Engine Code | Engine                       | Power & torque | Prodn |
|-----------------------------|---------|---------|-------------|------------------------------|----------------|-------|
| <b>C 160 Kompressor</b>     | 203.730 | 2005-06 | M271.921    | 1,796 cc 16V L4 supercharged | 90 kW 190 Nm   |       |
| <b>C 180</b>                | 203.735 | 2000-02 | M111.951    | 1,998 cc 16V L4              | 95 kW 190 Nm   |       |
| <b>C 180 Kompressor</b>     | 203.746 | 2002-07 | M271.946    | 1,796 cc 16V L4 supercharged | 105 kW 220 Nm  |       |
| <b>C 200 Kompressor</b>     | 203.745 | 2000-02 | M111.955    | 1,998 cc 16V L4 Supercharged | 120 kW 230 Nm  |       |
| <b>C 200 Kompressor</b>     | 203.742 | 2002-07 | M271.940    | 1,796 cc 16V L4 supercharged | 122 kW, 240 Nm |       |
| <b>C 200 CGI Kompressor</b> | 203.743 | 2003-05 | M271.942    | 1,796 cc 16V L4 supercharged | 125 kW, 250 Nm |       |
| <b>C 230</b>                | 203.752 | 2005-07 | M272.920    | 2,496 cc 24V V6              | 150 kW, 245 Nm |       |
| <b>C 230 Kompressor</b>     | 203.747 | 2001-02 | M111.981    | 2.3 16V I4 supercharged      | 145 kW 280 Nm  |       |
| <b>C 230 Kompressor</b>     | 203.740 | 2002-05 | M271.948    | 1,796 cc 16V L4 supercharged | 141 kW, 260 Nm |       |
| <b>C 320</b>                | 203.764 | 2002-05 | M112.946    | 3,199 cc 18V V6              | 160kW, 310 Nm  |       |
| <b>C 350</b>                | 203.756 | 2005-07 | M272.960    | 2,496 cc 24V V6              | 200kW 350Nm    |       |
| <b>C 32 AMG</b>             | 203.764 | 2002-04 | M112.961    | 3,199 cc 18V V6 supercharged | 260kW 450Nm    |       |
| <b>C 200 CDI</b>            | 203.707 | 2003-07 | OM646.962   | 2148cc 16V L4 turbo          | 90kW 270Nm     |       |
| <b>C 220 CDI</b>            | 203.706 | 2000-03 | OM611.962   | 2148cc 16V L4 turbo          | 105kW 315Nm    |       |
| <b>C 220 CDI</b>            | 203.708 | 2003-07 | OM646.963   | 2148cc 16V L4 turbo          | 110 kW 340Nm   |       |
| <b>C 30 CDI AMG</b>         | 203.718 | 2003-04 | OM612.990   | 2,950 cc 20V L5 turbo        | 170kW 540 Nm   |       |
| <b>CLC 160</b>              | 203.731 | 2008-11 | M271.911    | 1597cc 16V L4                | 95 kW, 220Nm   |       |
| <b>CLC 180 Kompressor</b>   | 203.746 | 2008-11 | M271.946    | 1796cc 16V L4 supercharged   | 105 kW 220Nm   |       |
| <b>CLC 200 Kompressor</b>   | 203.741 | 2008-11 | M271.957    | 1796cc 16V L4 supercharged   | 135 kW 250Nm   |       |
| <b>CLC 230 / CLC 250</b>    | 203.752 | 2008-11 | M272.920    | 2496cc 24V V6                | 150 kW 245Mn   |       |
| <b>CLC 350</b>              | 203.756 | 2008-11 | M272.960    | 3498cc 24V V6                | 200 kW 350Nm   |       |
| <b>CLC 200 CDI</b>          | 203.707 | 2008-11 | OM646.962   | 2148cc 16V L4 turbo          | 90 kW 270Nm    |       |
| <b>CLC 220 CDI</b>          | 203.708 | 2008-11 | OM646.963   | 2148cc 16V L4 turbo          | 110 kW 340Nm   |       |

Ckd M@RS





## W204 Sedan and S204 station wagon

| Model            | Chassis     | Years   | Engine Code   | Engine                       | Power & torque |
|------------------|-------------|---------|---------------|------------------------------|----------------|
| C 180 Kompressor | 204.046/246 | 2007–08 | M 271.952     | 1,796 cc 16V L4 supercharged | 115 kW 230 Nm  |
| C 180 Kompressor | 204.044     | 2008–10 | M 271 910     | 1,597 cc 16V L4 supercharged | 115 kW 230 Nm  |
| C 180 Kompressor | 204.045/245 | 2008–10 | M 271 910     | 1,597 cc 16V L4 supercharged | 115 kW 230 Nm  |
| C 180 CGI        | 204.049/249 | 2010–12 | M 271.820     | 1,796 cc 16V L4 turbo        | 115 kW, 250 Nm |
| C 180 CGI        | 204.031/231 | 2012–15 | M 274.910     | 1,595 cc 16V L4 turbo        | 115 kW, 250 Nm |
| C 200 Kompressor | 204.041/241 | 2007–10 | M 271.950     | 1,796 cc 16V L4 supercharged | 135 kW, 250 Nm |
| C 200 CGI        | 204.048/248 | 2010–15 | M 271.820/860 | 1,796 cc 16V L4 turbo        | 135 kW, 270 Nm |
| C 200            | 204.048/248 | 2011–14 | M 271.820     | 1,796 cc 16V L4 turbo        | 137 kW, 270 Nm |
| C 230, C250      | 204.052/252 | 2007–09 | M 272.921     | 2,496 cc 24V V6              | 150 kW, 245 Nm |
| C 230 4matic     | 204.085     | 2007–09 | M 272.911     | 2,496 cc 24V V6              | 150 kW, 245 Nm |
| C 250, C 250 CGI | 204.047/247 | 2009–15 | M 271.860     | 1,796 cc 16V L4 turbo        | 150 kW, 310 Nm |
| C 280            | 204.054/254 | 2007–14 | M 272.947     | 2,996 cc 24V V6              | 170 kW, 300 Nm |
| C 280 4Matic     | 204.081     | 2007–14 | M 272.948     | 2,996 cc 24V V6              | 170 kW, 300 Nm |
| C 300            | 204.054/254 | 2009–11 | M 272.947     | 2,996 cc 24V V6              | 170 kW, 300 Nm |
| C 300 4Matic     | 204.081     | 2009–11 | M 272.948     | 2,996 cc 24V V6              | 170 kW, 300 Nm |
| C 300, C300CGI   | 204.055     | 2012–14 | M 276.957     | 3,498 cc 24V V6              | 185 kW, 340 Nm |
| C 300 4Matic     | 204.080     | 2012–14 | M 276.957     | 3,498 cc 24V V6              | 185 kW, 340 Nm |
| C 350            | 204.056/256 | 2007-11 | M 272.961     | 3,498 cc 24V V6              | 200 kW, 350 Nm |
| C 350 4matic     | 204.087     | 2007–11 | M 272.971     | 3,498 cc 24V V6              | 200 kW, 350 Nm |
| C 350 CGI        | 204.065     | 2008–14 | M 272.982     | 3,498 cc 24V V6              | 215 kW, 365 Nm |
| C 350, C350CGI   | 204.057/257 | 2011-14 | M 276.957     | 3,498 cc 24V V6              | 225kW          |
| C 350 4matic     | 204.088     | 2011-14 | M 276.957     | 3,498 cc 24V V6              | 225kW          |
| C 63 AMG         | 204.077/277 | 2007–15 | M 156.985     | 6,208 cc 32V V8              | 336 kW, 600 Nm |
| C 63 AMG         | 204.077     | 2007–15 | M 156.985     | 6,208 cc 32V V8              | 358 kW, 600 Nm |
| C 63 AMG "507"   | 204.077     | 2013–15 | M 156.985     | 6,208 cc 32V V8              | 373 kW, 610 Nm |
| C 63 AMG DR520   | 204.077     | 2013–15 | M 156.985     | 6,208 cc 32V V8              | 382 kW         |
| C 180 CDI        | 204.000/200 | 2011–14 | OM 651.913    | 2,143 cc 16V L4 turbo        | 88 kW, 300 Nm  |
| C 200 CDI        | 204.007/207 | 2007–09 | OM 646.811    | 2,148 cc turbo 16V L4        | 100 kW, 270 Nm |
| C 200 CDI        | 204.006     | 2008–09 | OM 646.812    | 2,148 cc turbo 16V L4        | 100 kW, 270 Nm |
| C 200 CDI        | 204.001/201 | 2009–14 | OM 651.913    | 2,143 cc 16V L4 turbo        | 100 kW, 330 Nm |
| C 220 CDI        | 204.008/208 | 2007–09 | OM 646.811    | 2,148 cc turbo 16V L4        | 125 kW, 400 Nm |
| C 220 CDI        | 204.002/202 | 2009–15 | OM 651.911    | 2,143 cc 16V L4 turbo        | 125 kW, 400 Nm |
| C 220 CDI 4matic | 204.084/284 | 2009–15 | OM 651.912    | 2,143 cc 16V L4 turbo        | 125 kW, 400 Nm |
| C 250 CDI        | 204.003/203 | 2008–15 | OM 651.911    | 2,143 cc turbo 16V L4        | 150 kW 500 Nm  |
| C 250 CDI 4Matic | 204.082/282 | 2010–14 | OM 651.912    | 2,143 cc turbo 16V L4        | 150 kW 500 Nm  |
| C 300 CDI 4Matic | 204.092/292 | 2011–14 | OM 642.832    | 2,987 cc 24V V6 turbo        | 170 kW, 540 Nm |
| C 320 CDI        | 204.022/222 | 2007–09 | OM 642.960    | 2,987 cc turbo 24V V6        | 165 kW, 510 Nm |
| C 320 CDI 4Matic | 204.089/289 | 2007–09 | OM 642.961    | 2,987 cc turbo 24V V6        | 165 kW, 510 Nm |
| C 350 CDI        | 204.022/222 | 2009–14 | OM 642.960    | 2,987 cc turbo 24V V6        | 165 kW, 510 Nm |
| C 350 CDI 4Matic | 204.089/289 | 2009–14 | OM 642.961    | 2,987 cc turbo 24V V6        | 165 kW, 510 Nm |
| C 350 CDI        | 204.025/225 | 2009–11 | OM 642.830    | 2,987 cc turbo 24V V6        | 170 kW, 540 Nm |
| C 350 CDI 4Matic | 204.092/292 | 2009–11 | OM 642.832    | 2,987 cc turbo 24V V6        | 170 kW, 540 Nm |
| C 350 CDI        | 204.023/223 | 2011–14 | OM 642.834    | 2,987 cc 24V V6 turbo        | 195 kW, 620 Nm |

Engine code: Station wagon has 2 as the 4<sup>th</sup> digit sedan has 0



## C204 Coupé

| Model                  | Chassis | Years   | Engine Code | Engine                        | Power & torque | Prodn |
|------------------------|---------|---------|-------------|-------------------------------|----------------|-------|
| <b>C 180, C180 CGI</b> | 204.349 | 2011–12 | M 271.820   | 1,796 cc 16V L4 turbo         | 115 kW, 250 Nm |       |
| <b>C 180</b>           | 204.331 | 2012–14 | M 274.910   | 1,595 cc 16V L4 turbo         | 115 kW, 250 Nm |       |
| <b>C 200 CGI</b>       | 204.348 | 2011–14 | M 271.860   | 1,796 cc 16V L4 turbo         | 135 kW, 270 Nm |       |
| <b>C 250, C250CGI</b>  | 204.347 | 2011–15 | M 271.860   | 1,796 cc 16V L4 turbo         | 150 kW, 310 Nm |       |
| <b>C 350</b>           | 204.357 | 2011–14 | M 276.957   | 3,498 cc 24V V6               | 225 kW, 370 Nm |       |
| <b>C 350 4matic</b>    | 204.388 | 2011–14 | M 276.957   | 3,498 cc 24V V6               | 225 kW, 370 Nm |       |
| <b>C 63 AMG</b>        | 204.377 | 2011–   | M 156.985   | 6,208 cc 32V V8               | 336 kW, 600 Nm |       |
| <b>C 63 AMG</b>        | 204.377 | 2012–15 | M 156.985   | 6,208 cc 32V V8               | 358 kW, 600 Nm |       |
| <b>C 63 AMG "507"</b>  | 204.377 | 2013–15 | M 156.985   | 6,208 cc 32V V8               | 373 kW, 610 Nm |       |
| <b>C 63 AMG</b>        | 204.377 | 2012–15 | M 156.985   | 6,208 cc 32V V8               | 380 kW,        |       |
| <b>C 220 CDI</b>       | 204.302 | 2011–14 | OM 651.911  | 2,143 cc 16V L4 twin turbo    | 125 kW, 400 Nm |       |
| <b>C 250 CDI</b>       | 204.303 | 2011–14 | OM 651.911  | 2,143 cc 16V L4 2-stage turbo | 150 kW, 500 Nm |       |



## W205 Sedan and S205 Station Wagon

| Model                         | Chassis         | Years   | Engine Code | Engine                               | Power & torque |
|-------------------------------|-----------------|---------|-------------|--------------------------------------|----------------|
| <b>C 160</b>                  | 205.044/244     | 2015–   | M274.910    | 1,595 cc L4 Turbo                    | 95kW,          |
| <b>C 180</b>                  | 205.040/140/240 | 2014–   | M274.910    | 1,595 cc L4 Turbo                    | 115kW, 250Nm   |
| <b>C 200</b>                  | 205.042/142/242 | 2014–   | M274.920    | 1,991 cc L4 Turbo                    | 135 kW 300 Nm  |
| <b>C 200 4matic</b>           | 205.043/143/243 | 2014–   | M274.920    | 1,991 cc L4 Turbo                    | 135 kW 300 Nm  |
| <b>C 200 EQ boost</b>         | 205.077         | 2018–   | M264.915    | 1,497cc L4 Turbo                     | 135 kW 280 Nm  |
| <b>C 200 EQ boost 4matic</b>  | 205.078         | 2018–   | M264.915    | 1,497cc L4 Turbo                     | 135 kW 280 Nm  |
| <b>C 250</b>                  | 205.045/145/245 | 2014–   | M274.920    | 1,991 cc L4 Turbo                    | 155 kW 350 Nm  |
| <b>C 300</b>                  | 205.048/148/248 | 2014–   | M274.920    | 1,991 cc L4 Turbo                    | 180kW 370 Nm   |
| <b>C 300 4matic</b>           | 205.049         | 2014–   | M274.920    | 1,991 cc L4 Turbo                    | 180kW 370 Nm   |
| <b>C 300</b>                  | 205.083         | 2018–   | M264.920    | 1,991cc L4 Turbo                     | 190kW 370Nm    |
| <b>C 350 e Plug-In Hybrid</b> | 205.047/147/247 | 2015–   | M274.920    | 1,991 cc L4 Turbo plus 60kW electric | 205 kW 600 Nm  |
| <b>C 400 4Matic</b>           | 205.066/266     | 2015–   | M276.823    | 2,996 cc V6 Turbo                    | 245 kW 480 Nm  |
| <b>C 450 AMG 4Matic</b>       | 205.064/164/264 | 2015-16 | M276.823    | 2,996 cc V6 Turbo                    | 270 kW 520 Nm  |
| <b>AMG C 43 4Matic</b>        | 205.064         | 2016–18 | M276.823    | 2,996 cc V6 Turbo                    | 270 kW 520 Nm  |
| <b>AMG C 43 4Matic</b>        | 205.064         | 2018-   | M276.823    | 2,996 cc V6 Turbo                    | 287 kW         |
| <b>AMG C 63</b>               | 205.086/286     | 2014–   | M177.980    | 3,982 cc V8 Turbo                    | 350 kW 650 Nm  |
| <b>AMG C 63 S</b>             | 205.087/287     | 2014–   | M177.980    | 3,982 cc V8 Turbo                    | 375 kW 700 Nm  |
| <b>C 180 BlueTEC</b>          | 205.036/236     | 2014–   | OM626.951   | 2,143 cc L4 Turbo                    | 85 kW          |
| <b>C 180 d</b>                | 205.000         | 2018–   | OM654.916   | 1950cc L4 Turbo                      | 90 kW          |
| <b>C 200 BlueTEC</b>          | 205.037/237     | 2014–   | OM626.951   | 2,143 cc L4 Turbo                    | 100 kW         |

|                             |             |         |           |                   |               |
|-----------------------------|-------------|---------|-----------|-------------------|---------------|
| <b>C 200 d</b>              | 205.001     | 2018–   | OM654.916 | 1950cc L4 Turbo   | 118 kW        |
| <b>C 200 d BlueTEC</b>      | 205.007/207 | 2015–   | OM651.921 | 2,143cc L4 Turbo  | 100 kW        |
| <b>C 200 d</b>              | 205.011     | 2018–   | OM654.920 | 1950cc L4 Turbo   | 110kW         |
| <b>C 220 BlueTEC</b>        | 205.003     | 2014–   | OM651.921 | 2,143 cc L4 Turbo | 120kW         |
| <b>C 220 CDI</b>            | 205.002     | 2013–15 | OM651.921 | 2,143 cc L4 Turbo | 125kW 400Nm   |
| <b>C 220 BlueTEC</b>        | 205.004/204 | 2013–15 | OM651.921 | 2,143 cc L4 Turbo | 125kW 400Nm   |
| <b>C 220 BlueTEC 4matic</b> | 205.005/205 | 2015–   | OM651.921 | 2,143 cc L4 Turbo | 125kW 400Nm   |
| <b>C 220 d</b>              | 205.014     | 2018–   | OM654.920 | 1950cc L4 Turbo   | 143 kW 400Nm  |
| <b>C 220 d 4matic</b>       | 205.015     | 2018–   | OM654.920 | 1950cc L4 Turbo   | 143 kW 400Nm  |
| <b>C 250 CDI</b>            | 205.006     | 2014–   | OM651.921 | 2,143 cc L4 Turbo | 150 kW 500 Nm |
| <b>C 250 BlueTEC</b>        | 205.008/208 | 2014–   | OM651.921 | 2,143 cc L4 Turbo | 150 kW 500 Nm |
| <b>C 250 BlueTEC 4matic</b> | 205.009/209 | 2014–   | OM651.921 | 2,143 cc L4 Turbo | 150 kW 500 Nm |
| <b>C 300 d</b>              | 205.018     | 2018–   | OM654.920 | 1950cc L4 Turbo   | 180 kW 500Nm  |
| <b>C 300 d / 4matic</b>     | 205.019     | 2018–   | OM654.920 | 1950cc L4 Turbo   | 180 kW 500Nm  |
| <b>C 300 BlueTEC Hybrid</b> | 205.012/212 | 2015–   | OM651.921 | 2,143 cc L4 Turbo | 170 kW 540 Nm |

Engine code: Station wagon has 2 as the 4<sup>th</sup> digit. Long wheelbase has 1 and Sedan has 0



## C205 Coupé

| Model                        | Chassis | Years | Engine Code | Engine            | Power & torque | Prodn |
|------------------------------|---------|-------|-------------|-------------------|----------------|-------|
| <b>C 180</b>                 | 205.340 | 2015– | M274.910    | 1,595 cc L4 Turbo | 115kW, 250Nm   |       |
| <b>C 200</b>                 | 205.342 | 2015– | M274.920    | 1,991 cc L4 Turbo | 135 kW 300 Nm  |       |
| <b>C 200 4Matic</b>          | 205.343 | 2016– | M274.920    | 1,991 cc L4 Turbo | 135 kW 300 Nm  |       |
| <b>C 200 EQ boost</b>        | 205.377 | 2018– | M264.915    | 1,497cc L4 Turbo  | 135 kW         |       |
| <b>C 200 EQ boost 4Matic</b> | 205.378 | 2018– | M264.915    | 1,497cc L4 Turbo  | 135 kW         |       |
| <b>C 250</b>                 | 205.345 | 2015– | M274.920    | 1,991 cc L4 Turbo | 155 kW 350 Nm  |       |
| <b>C 300</b>                 | 205.348 | 2014– | M274.920    | 1,991 cc L4 Turbo | 180 kW 370 Nm  |       |
| <b>C 300 4matic</b>          | 205.349 | 2014– | M274.920    | 1,991 cc L4 Turbo | 180 kW 370 Nm  |       |
| <b>C 300</b>                 | 205.383 | 2018– | M264.920    | 1,991cc L4 Turbo  | 190 kW         |       |
| <b>C 400 4Matic</b>          | 205.366 | 2015– | M276.823    | 2,996 cc V6 Turbo | 245 kW 480 Nm  |       |
| <b>AMG C 43 4Matic</b>       | 205.364 | 2016– | M276.823    | 2,996 cc V6 Turbo | 270 kW 520 Nm  |       |
| <b>AMG C 43 4Matic</b>       | 205.364 | 2018– | M276.823    | 2,996 cc V6 Turbo | 287 kW         |       |
| <b>AMG C 63</b>              | 205.386 | 2014– | M177.980    | 3,982 cc V8 Turbo | 350 kW 650 Nm  |       |
| <b>AMG C 63 S</b>            | 205.387 | 2014– | M177.980    | 3,982 cc V8 Turbo | 375 kW 700 Nm  |       |
| <b>C 200d</b>                | 205.301 | 2018  | OM654.916   | 1,950cc L4 Turbo  | 118kW          |       |
| <b>C 220 d</b>               | 205.304 | 2014– | OM651.921   | 2,143 cc L4 Turbo | 120 kW         |       |
| <b>C 220 d</b>               | 205.304 | 2015– | OM651.921   | 2,143 cc L4 Turbo | 125 kW 400 Nm  |       |
| <b>C 220 d 4matic</b>        | 205.305 | 2015– | OM651.921   | 2,143 cc L4 Turbo | 125 kW 400 Nm  |       |
| <b>C 220 d</b>               | 205.314 | 2018– | OM654.920   | 1,950cc L4 Turbo  | 143 kW 400Nm   |       |
| <b>C 220 d 4matic</b>        | 205.315 | 2018– | OM654.920   | 1,950cc L4 Turbo  | 143 kW 400Nm   |       |
| <b>C 250 d</b>               | 205.308 | 2016– | OM651.921   | 2,143 cc L4 Turbo | 150 kW 500 Nm  |       |
| <b>C 250 d 4Matic</b>        | 205.309 | 2016– | OM651.921   | 2,143 cc L4 Turbo | 150 kW 500 Nm  |       |
| <b>C 300 d</b>               | 205.318 | 2018– | OM654.920   | 1950cc L4 Turbo   | 180 kW         |       |
| <b>C 300 d 4Matic</b>        | 205.319 | 2018– | OM654.920   | 1950cc L4 Turbo   | 180 kW         |       |





## A205 Cabriolet

| Model                        | Chassis | Years | Engine Code | Engine            | Power & torque | Prodn |
|------------------------------|---------|-------|-------------|-------------------|----------------|-------|
| <b>C 180</b>                 | 205.440 | 2015– | M274.910    | 1,595 cc L4 Turbo | 115kW, 250Nm   |       |
| <b>C 200</b>                 | 205.442 | 2015– | M274.920    | 1,991 cc L4 Turbo | 135 kW 300 Nm  |       |
| <b>C 200 4Matic</b>          | 205.443 | 2016– | M274.920    | 1,991 cc L4 Turbo | 135 kW 300 Nm  |       |
| <b>C 200 EQ boost</b>        | 205.477 | 2018– | M264.915    | 1,497cc L4 Turbo  | 135 kW         |       |
| <b>C 200 EQ boost 4Matic</b> | 205.478 | 2018– | M264.915    | 1,497cc L4 Turbo  | 135 kW         |       |
| <b>C 250</b>                 | 205.445 | 2015– | M274.920    | 1,991 cc L4 Turbo | 155 kW 350 Nm  |       |
| <b>C 300</b>                 | 205.448 | 2014– | M274.920    | 1,991 cc L4 Turbo | 180 kW 370 Nm  |       |
| <b>C 300 4matic</b>          | 205.449 | 2014– | M274.920    | 1,991 cc L4 Turbo | 180 kW 370 Nm  |       |
| <b>C 300</b>                 | 205.483 | 2018– | M264.920    | 1,991cc L4 Turbo  | 190 kW         |       |
| <b>C 400 4Matic</b>          | 205.466 | 2015– | M276.823    | 2,996 cc V6 Turbo | 245 kW 480 Nm  |       |
| <b>AMG C 43 4Matic</b>       | 205.464 | 2016– | M276.823    | 2,996 cc V6 Turbo | 270 kW 520 Nm  |       |
| <b>AMG C 43 4Matic</b>       | 205.464 | 2018– | M276.823    | 2,996 cc V6 Turbo | 287 kW         |       |
| <b>AMG C 63</b>              | 205.486 | 2014– | M177.980    | 3,982 cc V8 Turbo | 350 kW 650 Nm  |       |
| <b>AMG C 63 S</b>            | 205.487 | 2014– | M177.980    | 3,982 cc V8 Turbo | 375 kW 700 Nm  |       |
| <b>C 200d</b>                | 205.401 | 2018– | OM654.916   | 1,950cc L4 Turbo  | 118kW          |       |
| <b>C 220 d</b>               | 205.404 | 2015– | OM651.921   | 2,143 cc L4 Turbo | 125 kW 400 Nm  |       |
| <b>C 220 d 4matic</b>        | 205.405 | 2015– | OM651.921   | 2,143 cc L4 Turbo | 125 kW 400 Nm  |       |
| <b>C 220 d</b>               | 205.414 | 2018– | OM654.920   | 1,950cc L4 Turbo  | 143 kW 400Nm   |       |
| <b>C 220 d 4matic</b>        | 205.415 | 2018– | OM654.920   | 1,950cc L4 Turbo  | 143 kW 400Nm   |       |
| <b>C 250 d</b>               | 205.408 | 2016– | OM651.921   | 2,143 cc L4 Turbo | 150 kW 500 Nm  |       |
| <b>C 300 d</b>               | 205.418 | 2018– | OM654.920   | 1,950cc L4 Turbo  | 180 kW         |       |



## A-CLASS



### W168

| Model     | Chassis     | Years     | Engine Code  | Engine              | Power & torque | Prodn |
|-----------|-------------|-----------|--------------|---------------------|----------------|-------|
| A 140     | 168.031     | 1997–2001 | M166.940/960 | 1397cc L4           | 60kW 130Nm     |       |
| A 140     | 168.031/131 | 2001–2004 | M166.940/960 | 1397cc L4           | 60 kW 140 Nm   |       |
| A 160     | 168.033/133 | 1997–2005 | M166.960     | 1598cc L4           | 67kW 150Nm     |       |
| A 190     | 168.032/132 | 1999–2005 | M166.990     | 1898cc L4           | 92kW 150Nm     |       |
| A 210     | 168.035/135 | 2002–2004 | M166.995     | 2084cc L4           | 103kW 205Nm    |       |
| A 160 CDI | 168.007     | 1998–2001 | OM668.941    | 1698cc L4 CDI turbo | 44kW 160Nm     |       |
| A 160 CDI | 168.006     | 2001–2004 | OM668.940    | 1698cc L4 CDI turbo | 55 kW 160 Nm   |       |
| A 170 CDI | 168.008     | 1998–2001 | OM668.940    | 1698cc L4 CDI turbo | 66kW 180Nm     |       |
| A 170 CDI | 168.009/109 | 2001–2004 | OM668.942    | 1698cc L4 CDI turbo | 70 kW 180 Nm   |       |

Chassis codes: 1 as the 4<sup>th</sup> digit indicates long wheelbase  
CKD M@RS



### W169

| Model        | Chassis     | Years   | Engine Code | Engine           | Power & torque | Production |
|--------------|-------------|---------|-------------|------------------|----------------|------------|
| A 150 / A160 | 169.031/331 | 2004-12 | M266.920    | 1498 cc L4       | 70 kW 140 Nm   |            |
| A 170 / A180 | 169.032/332 | 2004-12 | M266.940    | 1699 cc L4       | 85kW 155 Nm    |            |
| A 200        | 169.033/333 | 2004-12 | M266.960    | 2034 cc L4       | 100 kW 185 Nm  |            |
| A 200 Turbo  | 169.034/334 | 2005-12 | M266.980    | 2034 cc L4 turbo | 142kW 280 Nm   |            |
| A 160 CDI    | 169.006/306 | 2004-12 | OM640.942   | 1991 cc L4       | 60 kW 180 Nm   |            |
| A 180 CDI    | 169.007/307 | 2004-12 | OM640.940   | 1991 cc L4       | 80 kW 250 Nm   |            |
| A 200 CDI    | 169.008/308 | 2004-12 | OM640.941   | 1991 cc L4       | 103 kW 300 Nm  |            |
| E Cell       | 169.090     | 2010-12 | EM780.992   |                  | 50 kW          |            |

Chassis codes: 0 as 4<sup>th</sup> digit indicates sedan 3 indicates coupe  
Prt ckd M@RS



## W176

| Model                | Chassis     | Years   | Engine Code | Engine                        | Power & torque | Prodn |
|----------------------|-------------|---------|-------------|-------------------------------|----------------|-------|
| A 160                | 176.041     | 2015-18 | M270.910    | 1,595 cc L4 turbo             | 75kW, 180Nm    |       |
| A 180                | 176.042     | 2012-18 | M270.910    | 1,595 cc L4 turbo             | 90kW, 200Nm    |       |
| A 200                | 176.043     | 2012-18 | M270.910    | 1,595 cc L4 turbo             | 115kW, 250Nm   |       |
| A 220 4matic         | 176.047     | 2014-18 | M270.920    | 1,991 cc L4 turbo             | 135kW, 300Nm   |       |
| A 250 / 4matic       | 176.044/046 | 2012-15 | M270.920    | 1,991 cc L4 turbo             | 155kW, 350Nm   |       |
| A 250 Sport / 4Matic | 176.050/051 | 2015-18 | M270.920    | 1,991 cc L4 turbo             | 160kW, 350Nm   |       |
| A 45 AMG             | 176.052     | 2013-15 | M133.980    | 1,991 cc L4 twin-scroll turbo | 265kW, 450Nm   |       |
| A 45 AMG             | 176.052     | 2015-18 | M133.980    | 1,991 cc L4 twin-scroll turbo | 280kW 475Nm    |       |
| A 160 CDI /d         | 176.011     | 2013-18 | OM607.951   | 1,461 cc L4 turbo             | 66kW, 220Nm    |       |
| A 180 CDI /d         | 176.012     | 2012-18 | OM607.951   | 1,461 cc L4 turbo             | 80kW, 260Nm    |       |
| A 180 CDI            | 176.000     | 2012-14 | OM651.901   | 1,796 cc L4 turbo             | 80kW, 250Nm    |       |
| A 180 CDI            | 176.007     | 2014-   | OM651.930   | 2,143 cc L4 turbo             | 80kW           |       |
| A 200 CDI            | 176.001     | 2012-14 | OM651.901   | 1,796 cc L4 turbo             | 100kW, 300Nm   |       |
| A 200 CDI /4matic    | 176.008/002 | 2014-18 | OM651.930   | 2,143 cc L4 turbo             | 100kW, 300Nm   |       |
| A 220 CDI / 4matic   | 176.003/005 | 2012-   | OM651.930   | 2,143 cc L4 turbo             | 125kW, 350Nm   |       |
| A 220 CDI            | 176.003     | 2014-   | OM651.930   | 2,143 cc L4 turbo             | 120kW, 350Nm   |       |
| A 220 CDI / 4matic   | 176.003/005 | 2015-18 | OM651.930   | 2,143 cc L4 turbo             | 130kW, 350Nm   |       |



## W177

| Model       | Chassis | Years | Engine Code  | Engine            | Power & torque | Production |
|-------------|---------|-------|--------------|-------------------|----------------|------------|
| A160        | 177.082 | 2018- | M282 DE14 LA | 1332cc L4 turbo   | 75 kW 180 Nm   |            |
| A180        | 177.084 | 2018- | M282 DE14 LA | 1332cc L4 turbo   | 100 kW 200 Nm  |            |
| A200        | 177.087 | 2018- | M282 DE14 LA | 1332cc L4 turbo   | 120 kW 250 Nm  |            |
| A220        | 177.044 | 2018- | M260 DE20 LA | 1991cc L4 turbo   | 140 kW 300 Nm  |            |
| A220 4Matic | 177.045 | 2018- | M260 DE20 LA | 1991cc L4 turbo   | 140 kW 300 Nm  |            |
| A250        | 177.046 | 2018- | M260 DE20 LA | 1991cc L4 turbo   | 165 kW 350 Nm  |            |
| A250 4matic | 177.047 | 2018- | M260 DE20 LA | 1991cc L4 turbo   | 165 kW 350 Nm  |            |
| A35 AMG     | 177.051 | 2019- | M260 DE20 LA | 1991cc L4 turbo   | 225kW 400 Nm   |            |
| A180d       | 177.003 | 2018- | OM608 DE15   | 1461cc L L4 turbo | 85 kW 260 Nm   |            |
| A200d       |         | 2018- | OM654        | 2.0 L4 turbo      | 110 KW 320 Nm  |            |
| A220d       |         | 2018- | OM654        | 2.0 L4 turbo      | 140 Kw 400 Nm  |            |



## CLA CLASS C117 Coupe and X117 Shooting Break

| Model                       | Chassis     | Years   | Engine Code | Engine                        | Power & torque | Prodn |
|-----------------------------|-------------|---------|-------------|-------------------------------|----------------|-------|
| <b>CLA 180</b>              | 117.342/942 | 2013–   | M 270.910   | 1,595 cc L4 turbo             | 90 kW 200 Nm   |       |
| <b>CLA 200</b>              | 117.343/943 | 2013–   | M 270.910   | 1,595 cc L4 turbo             | 115 kW 250 Nm  |       |
| <b>CLA 220</b>              | 117.345     | 2013–   | M 270.920   | 1,991 cc L4 turbo             | 135kW 300Nm    |       |
| <b>CLA 220 4 matic</b>      | 117.347/947 | 2013–   | M 270.920   | 1,991 cc L4 turbo             | 135kW 300Nm    |       |
| <b>CLA 250</b>              | 117.344/944 | 2013–   | M 270.920   | 1,991 cc L4 turbo             | 155 kW 350 Nm  |       |
| <b>CLA 250 4matic</b>       | 117.346/946 | 2013–   | M 270.920   | 1,991 cc L4 turbo             | 155 kW 350 Nm  |       |
| <b>CLA 250 Sport</b>        | 117.350     | 2013–   | M 270.920   | 1,991 cc L4 turbo             | 160 kW 350Nm   |       |
| <b>CLA 250 Sport 4Matic</b> | 117.351/951 | 2013–   | M 270.920   | 1,991 cc L4 turbo             | 160 kW 350Nm   |       |
| <b>CLA 45 AMG</b>           | 117.352     | 2013–15 | M 133.980   | 1,991 cc L4 twin-scroll turbo | 265 kW 450 Nm  |       |
| <b>CLA 45 AMG 4matic</b>    | 117.352/952 | 2015–   | M 133.980   | 1,991 cc L4 twin-scroll turbo | 280 kW 475 Nm  |       |
| <b>CLA 180 CDI</b>          | 117.312/912 | 2013    | OM 607.951  | 1,461 cc L4 turbo             | 80 kW 260 Nm   |       |
| <b>CLA 200 CDI</b>          | 117.301     | 2013–14 | OM 651.901  | 1,796 cc L4 turbo             | 100 kW 300 Nm  |       |
| <b>CLA 200 CDI</b>          | 117.308/908 | 2014–   | OM 651.930  | 2,143 cc L4 turbo             | 100 kW 300 Nm  |       |
| <b>CLA 200 CDI 4matic</b>   | 117.302/902 | 2014–   | OM 651.930  | 2,143 cc L4 turbo             | 100 kW 300 Nm  |       |
| <b>CLA 220 CDI</b>          | 117.303     | 2013–14 | OM 651.930  | 2,143 cc L4 turbo             | 125 kW 350 Nm  |       |
| <b>CLA 220 CDI 4matic</b>   | 117.305     | 2013–14 | OM 651.930  | 2,143 cc L4 turbo             | 125 kW 350 Nm  |       |
| <b>CLA 220 CDI</b>          | 117.303/903 | 2014–   | OM 651.930  | 2,143 cc L4 turbo             | 130 kW 350 Nm  |       |
| <b>CLA 220 CDI 4matic</b>   | 117.305/905 | 2014–   | OM 651.930  | 2,143 cc L4 turbo             | 130 kW 350 Nm  |       |

4-door sedan (2013–present) 5-door shooting-brake (2015–present)

Chassis codes: The X117 Shooting Brake has 9 as the 4<sup>th</sup> digit in place of 3 for the Coupe



## MULTI PURPOSE VEHICLES



### W245 B-Class

| Model             | Chassis | Years   | Engine Code | Engine               | Power & torque | Production |
|-------------------|---------|---------|-------------|----------------------|----------------|------------|
| <b>B150</b>       | 245.231 | 2005-09 | M266.920    | 1498cc L4            | 70 kW 140 Nm   |            |
| <b>B160</b>       | 245.231 | 2009-11 | M266.920    | 1498cc L4            | 70 kW 140 Nm   |            |
| <b>B170</b>       | 245.232 | 2005-09 | M266.940    | 1699cc L4            | 85 kW 155 Nm   |            |
| <b>B180</b>       | 245.232 | 2009-11 | M266.940    | 1699cc L4            | 85 kW 155 Nm   |            |
| <b>B200</b>       | 245.233 | 2005-11 | M266.960    | 2034cc L4            | 100 kW 185 Nm  |            |
| <b>B200 Turbo</b> | 245.234 | 2005-11 | M266.980    | 2034cc L4 turbo      | 142 kW 280 Nm  |            |
| <b>B180 CDI</b>   | 245.207 | 2005-11 | OM640.940   | 1991cc L4            | 80 kW 250 Nm   |            |
| <b>B200 CDI</b>   | 245.208 | 2005-11 | OM640.941   | 1991cc L4            | 103 kW 300 Nm  |            |
| <b>B170 NGT</b>   | 245.233 | 2008-11 | M266.960    | 2034cc L4 (nat. gas) | 85 kW 165 Nm   |            |
| <b>F- CELL</b>    | 242.890 | 2010-11 |             | Electric             | 100kW          | 70         |

Prt ckd M@RS



### W246 B-Class

| Model                    | Chassis     | Years   | Engine Code | Engine               | Power & torque |
|--------------------------|-------------|---------|-------------|----------------------|----------------|
| <b>B 160</b>             | 246.241     | 2015-   | M 270.910   | 1,595cc 16V L4 turbo | 75kW, 180Nm    |
| <b>B 180</b>             | 246.242     | 2011-   | M 270.910   | 1,595cc 16V L4 turbo | 90kW, 200 Nm   |
| <b>B 200</b>             | 246.243     | 2011-   | M 270.910   | 1,595cc 16V L4 turbo | 115kW, 250Nm   |
| <b>B 220 4Matic</b>      | 246.247     | 2013-   | M 270.920   | 1,991cc 16V L4 turbo | 135kW, 300Nm   |
| <b>B 250 / 4matic</b>    | 246.244/246 | 2012-   | M 270.920   | 1,991cc 16V L4 turbo | 155kW, 350Nm   |
| <b>B 160 CDI</b>         | 246.211     | 2013-   | OM 607.951  | 1,461 cc L4 turbo    | 66kW, 220Nm    |
| <b>B 180 CDI</b>         | 246.212     | 2013-   | OM 607.951  | 1,461 cc L4 turbo    | 80kW, 260Nm    |
| <b>B 180 CDI</b>         | 246.207     | 2013-   | OM 651.930  | 1,796 cc L turbo     | 80kW, 250Nm    |
| <b>B 180 CDI</b>         | 246.200     | 2011-13 | OM 651.901  | 1,796 cc L turbo     | 80kW, 250Nm    |
| <b>B 200 CDI</b>         | 246.201     | 2011-14 | OM 651.901  | 1,796 cc L turbo     | 100kW 300Nm    |
| <b>B 200 CDI /4matic</b> | 246.208/202 | 2014-   | OM 651.930  | 1,796 cc L turbo     | 100kW 300Nm    |
| <b>B 220 CDI</b>         | 246.203     | 2012-14 | OM 651.930  | 2,143 cc L4 turbo    | 125kW, 350Nm   |
| <b>B 220 CDI /4matic</b> | 246.203/205 | 2014-   | OM 651.930  | 2,143 cc L4 turbo    | 130kW, 350Nm   |
| <b>B 180 /B 200 NGD</b>  | 242.848     | 2013-   | M 270.920   | 1,991cc 16V L4 turbo | 115kW, 270Nm   |
| <b>B 250e Electric</b>   | 242.890     | 2014-17 |             | AC induction motor   | 132kW, 340Nm   |

The electric version of the B-Class (**W 242**), called "Electric Drive", was offered in the USA and Germany between November 2014 and August 2017.





## W251 R-Class

| Model                         | Chassis     | Years   | Engine Code | Engine          | Power & torque | Prodn |
|-------------------------------|-------------|---------|-------------|-----------------|----------------|-------|
| <b>R280 / R300</b>            | 251.054/154 | 2007-14 | M272.945    | 2996cc V6       | 170 kW,300 Nm  |       |
| <b>R280 / R300 4matic</b>     | 251.062     | 2007-14 | M272.945    | 2996cc V6       | 170 kW,300 Nm  |       |
| <b>R320 4matic</b>            | 251.163     | 2014-   | M276.826    | 3499cc V6       | 225 kW 370 Nm  |       |
| <b>R350</b>                   | 251.056/156 | 2007-10 | M272.967    | 3498cc V6       | 200 kW 350 Nm  |       |
| <b>R350 4matic</b>            | 251.057/157 | 2006-13 | M272.967    | 3498cc V6       | 200 kW 350 Nm  |       |
| <b>R350 4matic</b>            | 251.065/165 | 2005-   | M272.967    | 3498 cc V6      | 200kW 350 Nm   |       |
| <b>R400 4matic</b>            | 251.166     | 2014-   | M276.825/6  | 3499cc V6       | 225 kW 370 Nm  |       |
| <b>R500 4matic</b>            | 251.075/175 | 2005-07 | M113.971    | 4966 cc V8      | 225 kW 460 Nm  |       |
| <b>R500 / R550 4matic</b>     | 251.072/172 | 2007-14 | M273.963    | 5461 cc V8      | 285 kW 530 Nm  |       |
| <b>R63 AMG 4matic</b>         | 251.077/177 | 2006-07 | M156.980    | 6208 cc V8      | 380 kW 630 Nm  |       |
| <b>R280 / R300 CDI</b>        | 251.121     | 2009-12 | OM642.870   | 2987cc V6 turbo | 140 kW 440 Nm  |       |
| <b>R280 / R300 CDI</b>        | 251.026/126 | 2007-   | OM642.950   | 2987cc V6 turbo | 165 kW 510 Nm  |       |
| <b>R280 / R300 CDI 4matic</b> | 251.020     | 2006-   | OM642.950   | 2987cc V6 turbo | 165 kW 510 Nm  |       |
| <b>R300 CDI</b>               | 251.021     | 2009-12 | OM642.870   | 2987cc V6 turbo | 140 kW 440 Nm  |       |
| <b>R320 / R350 CDI 4matic</b> | 251.022/122 | 2005-   | OM642.950   | 2987cc V6 turbo | 165 kW 510 Nm  |       |
| <b>R320 / R350 CDI 4matic</b> | 251.125     |         | OM642.870   | 2987cc V6 turbo | 140 kW 440 Nm  |       |
| <b>R350 BlueTEC 4matic</b>    | 251.124     |         | OM642.870   | 2987cc V6 turbo | 140 kW 440 Nm  |       |
| <b>R350 CDI 4matic</b>        | 251.023/123 | 2010-12 | OM642.872   | 2987cc V6 turbo | 198 kW 620 Nm  |       |

As of 2014, the R-Class was a China only model, and was assembled by contract manufacturer AM General in Indiana from 2015 to October 2017.

Chassis codes: 0 as the 4<sup>th</sup> digit is standard wheelbase, 1 as the 4<sup>th</sup> digit is long wheelbase

Prt ckd to M@RS

## SPORT UTILITY VEHICLES



### X156 GLA-Class

| Model              | Chassis | Years | Engine Code | Engine                        | Power & torque | Prodn |
|--------------------|---------|-------|-------------|-------------------------------|----------------|-------|
| GLA 180            | 156.942 | 2014– | M 270.910   | 1,595 cc L4 turbo             | 90kW, 200Nm    |       |
| GLA 200            | 156.943 | 2013– | M 270.910   | 1,595 cc L4 turbo             | 115kW, 250Nm   |       |
| GLA 220            | 156.945 | 2017– | M 270.920   | 1,991 cc L4 turbo             | 135kW, 300Nm   |       |
| GLA 220 4Matic     | 156.947 | 2017– | M 270.920   | 1,991 cc L4 turbo             | 135kW, 300Nm   |       |
| GLA 250            | 156.944 | 2013– | M 270.920   | 1,991 cc L4 turbo             | 155kW, 350Nm   |       |
| GLA 250 4Matic     | 156.946 | 2013– | M 270.920   | 1,991 cc L4 turbo             | 155kW, 350Nm   |       |
| GLA 45 AMG         | 156.952 | 2014– | M 133.980   | 1,991 cc L4 twin scroll turbo | 265kW, 450Nm   |       |
| GLA 180 CDI        | 156.912 | 2014– | OM 607.951  | 1,461 cc L4 turbo             | 80kW, 260Nm    |       |
| GLA 200 CDI        | 156.908 | 2013– | OM 651.930  | 2,143 cc L4 turbo             | 100kW, 300Nm   |       |
| GLA 200 CDI 4matic | 156.902 | 2013– | OM 651.930  | 2,143 cc L4 turbo             | 100kW, 300Nm   |       |
| GLA 220 CDI        | 156.903 | 2013– | OM 651.930  | 2,143 cc L4 turbo             | 125kW, 350Nm   |       |
| GLA 220 CDI 4matic | 156.905 | 2013– | OM 651.930  | 2,143 cc L4 turbo             | 125kW, 350Nm   |       |



### X204 GLK-Class

| Model              | Chassis | Years   | Engine Code | Engine                    | Power & torque |
|--------------------|---------|---------|-------------|---------------------------|----------------|
| GLK 200            | 204.934 | 2013–   | M274.920    | 1,991cc 16V L4            | 135kW 300Nm    |
| GLK 250            | 204.936 | 2013–   | M274.920    | 1,991cc 16V L4            | 155kW, 350Nm   |
| GLK 250 4matic     | 204.937 | 2013–   | M274.920    | 1,991cc 16V L4            | 155kW, 350Nm   |
| GLK 280 4Matic     | 204.981 | 2008–09 | M272.948    | 2,996cc 24V V6            | 170kW, 300Nm   |
| GLK 300 4Matic     | 204.981 | 2009–11 | M272.948    | 2,996cc 24V V6            | 170kW, 300Nm   |
| GLK 300            | 204.990 | 2013–   | M276.957    | 3,498cc 24V V6            |                |
| GLK 350            | 204.956 | 2008–12 | M272.991    | 3,498cc 24V V6            | 200kW, 350Nm   |
| GLK 350 4Matic     | 204.987 | 2008–12 | M272.971    | 3,498cc 24V V6            | 200kW, 350Nm   |
| GLK 350            | 204.957 | 2013–   | M276.957    | 3,498cc 24V V6            | 225kW, 370Nm   |
| GLK 350 CGI 4Matic | 204.988 | 2013–   | M276.957    | 3,498cc 24V V6            | 225kW, 370Nm   |
| GLK 200 CDI        | 204.901 | 2010–   | OM651.916   | 2,143cc 16V L4 turbo      | 105kW, 350Nm   |
| GLK 220 CDI        | 204.902 | 2009–   | OM651.916   | 2,143cc 16V L4 twin turbo | 125kW, 400Nm   |
| GLK 220 CDI 4Matic | 204.984 | 2009–   | OM651.912   | 2,143cc 16V L4 twin turbo | 125kW, 400Nm   |
| GLK 220 BlueTEC    | 204.997 | 2012–   | OM651.912   | 2,143cc 16V L4 twin turbo | 125kW, 400Nm   |

|                               |         |         |           |                           |               |  |
|-------------------------------|---------|---------|-----------|---------------------------|---------------|--|
| <b>4Matic</b>                 |         |         |           |                           |               |  |
| <b>GLK 250 CDI 4Matic</b>     | 204.982 | 2009–12 | OM651.912 | 2,143cc 16V L4 twin turbo | 150 kW, 500Nm |  |
| <b>GLK 250 BlueTEC 4Matic</b> | 204.904 | 2012–   | OM651.912 | 2,143cc 16V L4 twin turbo | 150 kW, 500Nm |  |
| <b>4Matic</b>                 |         |         |           |                           |               |  |
| <b>GLK 320 CDI 4Matic</b>     | 204.983 | 2008–09 | OM642.961 | 2,987cc 24V V6 turbo      | 165 kW, 540Nm |  |
| <b>GLK 350 CDI 4Matic</b>     | 204.983 | 2009–10 | OM642.961 | 2,987cc 24V V6 turbo      | 165 kW, 540Nm |  |
| <b>GLK 350 CDI 4Matic</b>     | 204.992 | 2010–12 | OM642.832 | 2,987cc 24V V6 turbo      | 170 kW, 540Nm |  |
| <b>GLK 350 CDI 4Matic</b>     | 204.993 | 2012–   | OM642.835 | 2,987cc 24V V6 turbo      | 195 kW, 620Nm |  |



## X253 GLC-Class SUV

| Model                  | Chassis | Years | Engine Code | Engine                                 | Power & torque      | Prodn |
|------------------------|---------|-------|-------------|--|---------------------|-------|
| <b>GLC 200</b>         | 253.942 | 2018- | M274.920    | 1,991 cc 16V L4 turbo                  | 135kW, 300 Nm       |       |
| <b>GLC 200 4Matic</b>  | 253.943 | 2018- | M274.920    | 1,991 cc 16V L4 turbo                  | 135kW, 300Nm        |       |
| <b>GLC 250 4Matic</b>  | 253.946 | 2015- | M274.920    | 1,991 cc 16V L4 turbo                  | 155kW, 350 Nm       |       |
| <b>GLC 300</b>         | 253.948 | 2016- | M274.920    | 1,991 cc 16V L4 turbo                  | 180kW, 370 Nm       |       |
| <b>GLC 300 4Matic</b>  | 253.949 | 2016- | M274.920    | 1,991 cc 16V L4 turbo                  | 180kW, 370 Nm       |       |
| <b>AMG GLC 43</b>      | 253.964 | 2016- | M276.823    | 2,996 cc 24V 6- twin-turbo             | 270kW, 520 Nm       |       |
| <b>AMG GLC 63</b>      | 253.    | 2017- | M177.980    | 3,982 cc 32V V8 twin-turbo             | 350 kW, 650 Nm      |       |
| <b>AMG GLC 63 S</b>    | 253.    | 2017- | M177.980    | 3,982 cc 32V V8 twin-turbo             | 375 kW, 700 Nm      |       |
| <b>GLC 350e 4Matic</b> | 253.954 | 2016- | M274.920    | 1,991 cc 16V L4 turbo + electric motor | 235kW, 560 Nm total |       |
| <b>GLC 200D</b>        | 253.901 | 201-  | OM651.921   | 2,143 cc 16V L4 turbo                  | 100kW               |       |
| <b>GLC 220D 4Matic</b> | 253.903 | 2015- | OM651.921   | 2,143 cc 16V L4 turbo                  | 125kW, 400 Nm       |       |
| <b>GLC 220D 4Matic</b> | 253.905 | 2015- | OM651.921   | 2,143 cc 16V L4 turbo                  | 125kW, 400 Nm       |       |
| <b>GLC 220D</b>        | 253.904 | 2015- | OM651.921   | 2,143 cc 16V L4 turbo                  | 125kW, 400 Nm       |       |
| <b>GLC 250D 4Matic</b> | 253.909 | 2015- | OM651.921   | 2,143 cc 16V L4 turbo                  | 150kW, 500 Nm       |       |
| <b>GLC 350D 4Matic</b> | 253.925 | 2016- | OM 642.873  | 2,987 cc 24V V6 turbo                  | 190kW, 620 Nm       |       |



## C253 GLC-Class Coupé

| Model                 | Chassis | Years | Engine Code | Engine                | Power & torque | Prodn |
|-----------------------|---------|-------|-------------|-----------------------|----------------|-------|
| <b>GLC 200</b>        | 253.342 | 2017- | M274.920    | 1,991 cc 16V L4 turbo | 135kW, 300 Nm  |       |
| <b>GLC 200 4Matic</b> | 253.343 | 2017- | M274.920    | 1,991 cc 16V L4 turbo | 135kW, 300Nm   |       |
| <b>GLC 250 4Matic</b> | 253.346 | 2015- | M274.920    | 1,991 cc 16V L4 turbo | 155kW, 350 Nm  |       |
| <b>GLC 300 4Matic</b> | 253.349 | 2016- | M274.920    | 1,991 cc 16V L4 turbo | 180kW, 370 Nm  |       |



|                        |         |       |            |  |                     |
|------------------------|---------|-------|------------|--|---------------------|
| <b>AMG GLC 43</b>      | 253.364 | 2016- | M276.823   | 2,996 cc 24V 6- twin-turbo             | 270kW, 520 Nm       |
| <b>AMG GLC 63</b>      | 253.    | 2017- | M177.980   | 3,982 cc 32V V8 twin-turbo             | 350 kW, 650 Nm      |
| <b>AMG GLC 63 S</b>    | 253.    | 2017- | M177.980   | 3,982 cc 32V V8 twin-turbo             | 375 kW, 700 Nm      |
| <b>GLC 350e 4Matic</b> | 253.354 | 2016- | M274.920   | 1,991 cc 16V L4 turbo + electric motor | 235kW, 560 Nm total |
| <b>GLC 200D</b>        | 253.301 | 201-  | OM651.921  | 2,143 cc 16V L4 turbo                  | 100kW               |
| <b>GLC 220D 4Matic</b> | 253.303 | 2015- | OM651.921  | 2,143 cc 16V L4 turbo                  | 125kW, 400 Nm       |
| <b>GLC 220D 4Matic</b> | 253.305 | 2015- | OM651.921  | 2,143 cc 16V L4 turbo                  | 125kW, 400 Nm       |
| <b>GLC 250D 4Matic</b> | 253.309 | 2015- | OM651.921  | 2,143 cc 16V L4 turbo                  | 150kW, 500 Nm       |
| <b>GLC 350D 4Matic</b> | 253.325 | 2016- | OM 642.873 | 2,987 cc 24V V6 turbo                  | 190kW, 620 Nm       |



## W163 ML-Class

| Model             |         | Years     | Engine Code | Engine          | Power & torque | Prodn |
|-------------------|---------|-----------|-------------|-----------------|----------------|-------|
| <b>ML 230</b>     | 163.136 | 1998-2000 | M111.977    | 2295cc L4       | 110kW, 220 Nm  |       |
| <b>ML 320</b>     | 163.154 | 1998-2003 | M112.942    | 3199cc V6       | 160kW, 315 Nm  |       |
| <b>ML 350</b>     | 163.157 | 2002-2005 | M112.970    | 3724cc V6       | 180kW, 344 Nm  |       |
| <b>ML 430</b>     | 163.172 | 1998-2001 | M113.942    | 4266cc V8       | 208kW, 400Nm   |       |
| <b>ML 500</b>     | 163.175 | 2001-2005 | M113.965    | 4966cc V8       | 225kW, 460Nm   |       |
| <b>ML 55 AMG</b>  | 163.174 | 2000-2005 | M113.981    | 5439cc V8       | 255kW, 510 Nm  |       |
| <b>ML 270 CDI</b> | 163.113 | 1999-2005 | OM612.963   | 2685cc L5 turbo | 125kW, 370Nm   |       |
| <b>ML 400 CDI</b> | 163.128 | 2001-2005 | OM628.963   | 3996cc V8 turbo | 184kW, 560Nm   |       |



## W164 ML-Class

| Model                        | Chassis | Years   | Engine Code | Engine                        | Power & torque     | Prodn |
|------------------------------|---------|---------|-------------|-------------------------------|--------------------|-------|
| <b>ML 300</b>                | 164.182 | 2010-   | M272.945    | 2996cc V6                     | 170kW, 300Nm       |       |
| <b>ML 350 4matic</b>         | 164.186 | 2005-08 | M272.963    | 3498cc V6                     | 200kW, 350Nm       |       |
| <b>ML 350</b>                | 164.156 | 2005-11 | M272.967    | 3498cc V6                     | 204kW, 350Nm       |       |
| <b>ML 450 4matic hybrid</b>  | 164.195 | 2009-11 | M272.973    | 3498cc V6 plus electric motor | 250kW, 517Nm total |       |
| <b>ML 500 4matic</b>         | 164.175 | 2005-11 | M113.964    | 4966cc V8                     | 225kW, 460Nm       |       |
| <b>ML 500/550 4matic</b>     | 164.172 | 2007-11 | M273.963    | 5461cc V8                     | 285kW, 530 Nm      |       |
| <b>ML 63 AMG 4matic</b>      | 164.177 | 2006-11 | M156.980    | 6208cc V8                     | 380kW, 630Nm       |       |
| <b>ML 280/300 CDI 4matic</b> | 164.120 | 2005-11 | OM642.940   | 2987cc V6 turbo               | 140kW, 440Nm       |       |



|                              |         |         |           |                 |               |
|------------------------------|---------|---------|-----------|-----------------|---------------|
| <b>ML300 CDI 4matic</b>      | 164.121 | 2009-11 | OM642.820 | 2987cc V6 turbo | 150kW         |
| <b>ML 320/350 CDI 4matic</b> | 164.122 | 2005-11 | OM642.940 | 2987cc V6 turbo | 165kW, 510 Nm |
| <b>ML 320/350 CDI 4matic</b> | 164.125 | 2009-11 | OM642.820 | 2987cc V6 turbo | 170kW         |
| <b>ML 350 BlueTEC 4matic</b> | 164.124 | 2009-10 | OM642.820 | 2987cc V6 turbo | 155kW, 540 Nm |
| <b>ML 420/450 CDI 4matic</b> | 164.128 | 2006-11 | OM629.912 | 3996cc V8       | 225kW, 700Nm  |

Gen production 2005 - 11  
Pt ckd M@RS



## W166 ML/GLE-Class

| Model                          | Chassis | Years | Engine Code | Engine                          | Power & torque  | Prodn |
|--------------------------------|---------|-------|-------------|---------------------------------|-----------------|-------|
| <b>ML 300 4Matic</b>           | 166.055 | 2012– | M276.955    | 3,498 cc 24V V6                 | 185kW, 340Nm    |       |
| <b>ML 320 4Matic</b>           | 166.062 | 2013– | M276.821    | 2,996 cc 24V V6 Biturbo         | 200kW           |       |
| <b>ML 350 4Matic</b>           | 166.057 | 2011– | M276.955    | 3,498 cc 24V V6                 | 225kW, 370Nm    |       |
| <b>ML 350</b>                  | 166.058 | 2011– | M276.955    | 3,498 cc 24V V6                 | 225kW, 370Nm    |       |
| <b>ML 400 4Matic</b>           | 166.056 | 2013– | M276.821    | 2,996 cc 24V V6 Biturbo         | 245kW, 480Nm    |       |
| <b>ML 400</b>                  | 166.059 | 2013– | M276.821    | 2,996 cc 24V V6 Biturbo         | 245kW, 480Nm    |       |
| <b>ML 450 Sport AMG 4matic</b> | 166.064 | 2014– | M276.821    | 2,996 cc 24V V6 Biturbo         | 270kW, 500Nm    |       |
| <b>GLE 500 e hybrid</b>        | 166.063 | 2015- | M276.821    | 2,996 cc 24V V6 +electric motor | 245kW plus 84kW |       |
| <b>ML 500/550 4Matic</b>       | 166.073 | 2012– | M278.928    | 4,663 cc 32V V8 Biturbo         | 300 kW, 460 Nm  |       |
| <b>ML 63 AMG</b>               | 166.074 | 2011– | M157.982    | 5,461 cc 32V V8 Biturbo         | 386 kW, 700 Nm  |       |
| <b>ML 63 AMG S</b>             | 166.075 | 2011– | M157.982    | 5,461 cc 32V V8 Biturbo         | 410 kW, 760 Nm  |       |
| <b>ML 250 CDI 4Matic</b>       | 166.003 | 2011– | OM651.960   | 2,143 cc 16V I4 Biturbo         | 150 kW, 500 Nm  |       |
| <b>ML 250 BlueTEC 4Matic</b>   | 166.004 | 2011– | OM651.960   | 2,143 cc 16V I4 Biturbo         | 150 kW, 500 Nm  |       |
| <b>ML 250 BlueTEC 4Matic</b>   | 166.006 | 2012– | OM651.960   | 2,143 cc 16V I4 Biturbo         | 150 kW, 500 Nm  |       |
| <b>ML 350 CDI 4matic</b>       | 166.023 | 2011– | OM642.940   | 2,987 cc 24V V6 turbo           | 170 kW,         |       |
| <b>ML 350 BlueTEC 4Matic</b>   | 166.024 | 2012– | OM642.826   | 2,987 cc 24V V6 turbo           | 190 kW, 620 Nm  |       |

Production July 2011 - 2019



## X164 GL-Class

| Model                            | Chassis | Years   | Engine Code | Engine          | Power & torque | Prodn |
|----------------------------------|---------|---------|-------------|-----------------|----------------|-------|
| GL450 4matic                     | 164.871 | 2006-12 | M273.923    | 4663cc V8       | 250kW, 460Nm   |       |
| GL 500/550 4matic                | 164.886 | 2006-12 | M273.963    | 5461cc V8       | 285kW, 530 Nm  |       |
| GL 320/350 CDI<br>4matic         | 164.822 | 2005-12 | OM642.940   | 2987cc V6 turbo | 165kW, 510 Nm  |       |
| GL 320 CDI/350<br>BlueTEC 4matic | 164.825 | 2009    | OM642.820   | 2987cc V6 turbo | 155kW, 540 Nm  |       |
| GL 350 CDI 4matic                | 164.823 | 2010-12 | OM642.822   | 2987cc V6 turbo | 195kW, 620 Nm  |       |
| GL 350 BlueTEC<br>4matic         | 164.824 | 2009-10 | OM642.820   | 2987cc V6 turbo | 155kW, 540 Nm  |       |
| GL 420/450 CDI<br>4matic         | 164.828 | 2006-12 | OM629.912   | 3996cc V8       | 225kW, 700Nm   |       |



## X166 GL-Class

| Model                   | Chassis | Years   | Engine Code | Engine                  | Power & torque | Prodn |
|-------------------------|---------|---------|-------------|-------------------------|----------------|-------|
| GL400 4matic            | 166.856 | 2013–   | M276.821    | 2,996 cc 24V V6 Biturbo | 245 kW, 480 Nm |       |
| GL450 4matic            | 166.872 | 2013-14 | M278.928    | 4,663 cc 32V V8 Biturbo | 270kW, 550 Nm  |       |
| GL450 4matic            | 166.864 | 2014-   | M276.821    | 2,996 cc 24V V6 Biturbo | 270kW, 500 Nm  |       |
| GL 500 4matic           | 166.871 | 2015-   | M278.912    | 3996cc                  | 310kW,         |       |
| GL 500/550<br>4matic    | 166.873 | 2012-   | M278.928    | 4,663 cc 32V V8 Biturbo | 320kW, 700Nm   |       |
| GL63 AMG                | 166.874 | 2013-15 | M157.982    | 5,461 cc 32V V8 Biturbo | 410kW 700Nm    |       |
| GL63 AMG                | 166.875 | 2016-   | M157.982    | 5,461 cc 32V V8 Biturbo | 430kW, 760nm   |       |
| GL350 CDI 4matic        | 166.823 | 2012–   | OM642.826   | 2987cc V6 turbo         | 190kW, 620Nm   |       |
| GL350 BlueTEC<br>4matic | 166.824 | 2012–   | OM642.826   | 2987cc V6 turbo         | 190kW, 620Nm   |       |

## 4 WHEEL DRIVE

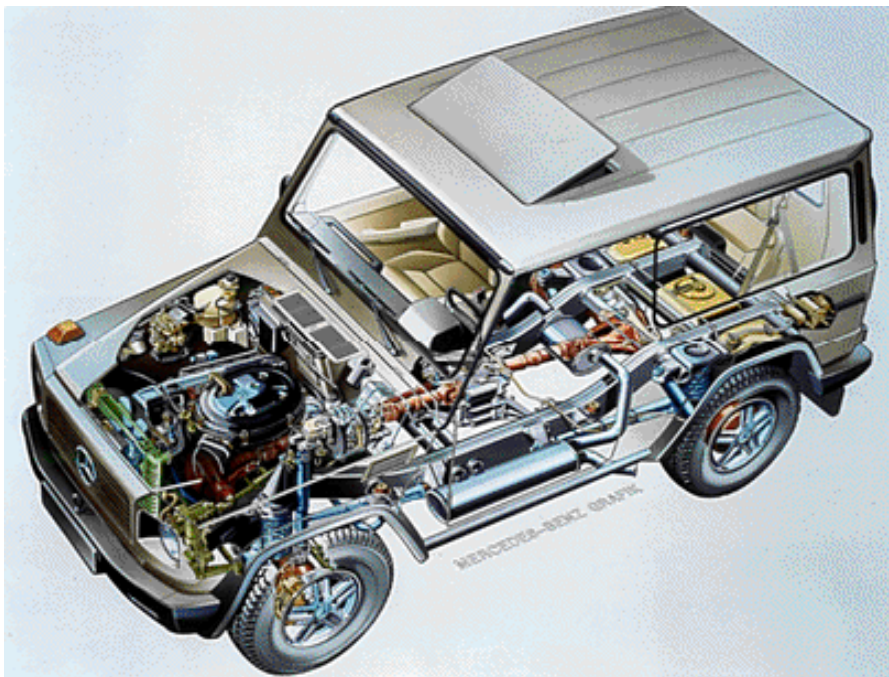
### W460 Short and Long Wheelbase

| Model           | Chassis           | Years   | Engine           | Power                 | Prodn             |
|-----------------|-------------------|---------|------------------|-----------------------|-------------------|
| 230G            | 460.210, 220, 230 | 1979-89 | M115.973/102.944 | 66/75/80kW, 167-174Nm | 4,138             |
| 230G (2850WB)   | 460.221, 231, 241 | 1979-89 | M115.973/102.944 | 66/75/80kW, 167-174Nm | <i>with above</i> |
| 230GE           | 460.218, 228, 238 | 1982-91 | M102.981/987     | 92kW, 192Nm           | 6,884             |
| 230GE (2850WB)  | 460.229, 239, 249 | 1982-91 | M102.981/987     | 92kW, 192Nm           | <i>with above</i> |
| 230GE (3120WB)  | 460.227           | 1982-91 | M102.981/987     | 92kW, 192Nm           | <i>with above</i> |
| 200GE           | 460.216, 236      | 1986-91 | M102.964         | 90kW, 178Nm           | 610               |
| 200GE (2850WB)  | 460.237           | 1986-91 | M102.964         | 90kW, 178Nm           | <i>with above</i> |
| 280GE           | 460.212, 222, 232 | 1979-91 | M110.994         | 115kW, 226Nm          | 9,945             |
| 280GE (2850WB)  | 460.223, 233, 243 | 1979-91 | M110.994         | 115kW, 226Nm          | <i>with above</i> |
| 280GE (3120 WB) | 460.224           | 1979-91 | M110.994         | 115kW, 226Nm          | <i>with above</i> |
| 240GD           | 460.310, 320, 330 | 1979-91 | OM616.936        | 53kW, 137Nm           | 7,645             |
| 240GD (2850WB)  | 460.321, 331, 341 | 1979-91 | OM616.936        | 53kW, 137Nm           | <i>with above</i> |
| 250GD           | 460.317, 337      | 1987-92 | OM602.930        | 62kW, 154Nm           | 2,051             |
| 250GD (2850WB)  | 460.328, 338      | 1987-92 | OM602.930        | 62kW, 154Nm           | <i>with above</i> |
| 250GD (3120WB)  | 460.329           | 1987-92 | OM602.930        | 62kW, 154Nm           | <i>with above</i> |
| 300GD           | 460.312, 322, 332 | 1979-91 | OM617.931        | 59/65kW, 172Nm        | 20,415            |
| 300GD (2850WB)  | 460.323, 333, 343 | 1979-91 | OM617.931        | 59/65kW, 172Nm        | <i>with above</i> |
| 300GD (3120WB)  | 460.325           | 1979-91 | OM617.931        | 59/65kW, 172Nm        | <i>with above</i> |

Chassis codes: 5<sup>th</sup> digit 1 = cabriolet 2 = van 3 = station wagon 4 = open vehicle

WB = Long Wheelbase in mm

Chassis 224, 227, 325, and 329 are cab chassis vehicles



### W463 Short and Long Wheelbase 1989-2000

| Model              | Chassis      | Engine   | Years   | kW  | Prodn |
|--------------------|--------------|----------|---------|-----|-------|
| 200GE / G200       | 463.200, 220 | M102.965 | 1990-94 | 87  | 376   |
| 200GE / G200 (LWB) | 463.221      | M102.965 | 1990-93 | 87  | ↑     |
| 230GE / G230       | 463.204, 224 | M102.989 | 1990-94 | 93  | 382   |
| 230GE / G230 (LWB) | 463.225      | M102.989 | 1990-94 | 93  | ↑     |
| 300GE / G300       | 463.207, 227 | M103.987 | 1990-94 | 125 | 2,132 |
| 300GE / G300 (LWB) | 463.228      | M103.987 | 1990-94 | 125 | ↑     |
| G320               | 463.208, 230 | M104.996 | 1994-97 | 155 |       |
| G320 (LWB)         | 463.231      | M104.996 | 1994-97 | 155 |       |



|                                     |              |               |         |     |       |
|-------------------------------------|--------------|---------------|---------|-----|-------|
| G3.6 AMG/G36 AMG                    | 463.208, 230 | M104.996      | 1995-97 | 206 |       |
| G3.6 AMG/G36 AMG (LWB)              | 463.231      | M104.996      | 1995-97 | 206 |       |
| G320                                | 463.209, 232 | M112.945 (V6) | 1997-00 | 158 |       |
| G320 (LWB)                          | 463.233      | M112.945 (V6) | 1997-00 | 158 |       |
| 500GE                               | 463.228      | M117.965      | 1993-94 | 177 | 446   |
| G500                                | 463.206, 240 | M113.962      | 1998-00 | 218 |       |
| G500 (LWB)                          | 463.241      | M113.962      | 1998-00 | 218 |       |
| G500 special protection B4, B6 & B7 | 463.241      | M113.962      | 1999-00 | 218 |       |
| G55 AMG                             | 463.206, 240 | M113.982      | 1991-01 | 260 |       |
| G55 AMG (LWB)                       | 463.241      | M113.982      | 1991-01 | 260 |       |
| 250GD                               | 463.304, 324 | OM 602.931    | 1990-92 | 69  | 241   |
| 250GD (LWB)                         | 463.325      | OM 602.931    | 1990-91 | 69  | ↑     |
| 300GD/G300 diesel                   | 463.307, 327 | OM 602.931    | 1990-94 | 83  | 2,547 |
| 300GD/G300 diesel (LWB)             | 463.328      | OM 602.931    | 1990-94 | 83  | ↑     |
| G300 turbodiesel                    | 463.308, 330 | OM 606.964    | 1996-00 | 130 |       |
| G300 turbodiesel (LWB)              | 463.331      | OM 606.964    | 1996-00 | 130 |       |
| 350GD turbo/G350 turbodiesel        | 463.300, 320 | OM 603.931    | 1992-96 | 100 | 1841  |
| 350GD turbo/G350 turbodiesel (LWB)  | 463.321      | OM 603.931    | 1992-96 | 100 | ↑     |

Chassis codes: 5<sup>th</sup> digit 0 = cabriolet, 2, 3 and 4 = station wagon (except where specified otherwise)

LWB = Long Wheelbase 2850mm (standard wheelbase is 2400 mm)

Years = Standard production (not including pre production)

M@RS

## W463 Short and Long Wheelbase 2000-

| Model                               | Chassis      | Engine        | Years   | kW      | Prodn |
|-------------------------------------|--------------|---------------|---------|---------|-------|
| G320                                | 463.250, 244 | M112.945 (V6) | 2001-06 | 158     |       |
| G320 (LWB)                          | 463.245      | M112.945 (V6) | 2001-06 | 158     |       |
| G500                                | 463.254, 247 | M113.962      | 2000-08 | 218     |       |
| G500 (LWB)                          | 463.248,249  | M113.962      | 2000-08 | 218     |       |
| G500 special protection B4, B6 & B7 | 463.248      | M113.962      | 2001-   | 218     |       |
| G500/G550                           | 463.202, 222 | M273.963/969  | 2008-15 | 285     |       |
| G500/G550 LWB                       | 463.236,237  | M273.963/969  | 2008-15 | 285     |       |
| G500 guard                          | 463.242      | M273.963      |         | 285     |       |
| G500 LWB                            | 463.234      | M176.980      | 2015-   | 340     |       |
| G550 LWB                            | 463.239      | M176.980      | 2015-   | 340     |       |
| G55 AMG                             | 463.254, 247 | M113.982      | 2001-04 | 260     |       |
| G55 AMG (LWB)                       | 463.248,     | M113.982      | 2001-04 | 260     |       |
| G55 AMG (LWB)                       | 463.243, 246 | M113.982      | 2001-04 | 260     |       |
| G55 AMG Kompressor (LWB)            | 463.270, 271 | M113.993      | 2004-07 | 350/368 |       |
| G63 AMG LWB                         | 463.272, 273 | M157.984      | 2012-   | 400     |       |
| G65 AMG LWB                         | 463.274, 275 | M279.982      | 2012-   | 450     |       |
| G270 CDI                            | 463.322      | OM 612.966    | 2001-06 | 115     |       |
| G270 CDI (LWB)                      | 463.323      | OM 612.966    | 2001-06 | 115     |       |
| G 320/350 CDI                       | 463.303, 340 | OM642.970     | 2006-10 | 165     |       |
| G 320/350 CDI (LWB)                 | 463.341      | OM642.970     | 2006-10 | 165     |       |
| G 320/350 CDI USA/CND (LWB)         | 463.343      | OM642.970     | 2006-10 | 165     |       |
| G350 BlueTEC                        | 463.306,336  | OM642.886     | 2010-15 | 155     |       |
| G350 BlueTEC (LWB)                  | 463.346      | OM642.886     | 2010-15 | 155     |       |
| G350 d (LWB)                        | 463.348      | OM642.887     | 2015-   | 180     |       |
| G350D Professional                  | 463.342      | OM642 887     | 2016-   | 180     |       |
| G400 CDI                            | 463.309, 332 | OM 628.962    | 2000-06 | 184     |       |
| G400 CDI (LWB)                      | 463.333s     | OM 628.962    | 2000-06 | 184     |       |

Chassis codes: 5<sup>th</sup> digit 0 and 5 = cabriolet, 2, 3, 4 and 7 = station wagon (except where specified otherwise)

LWB = Long Wheelbase 2850mm (standard wheelbase is 2400 mm)

Years = Standard production (not including pre production)

Pt ckd M@RS



## W461 All chassis including Military and Special Purpose

| Model                   | Chassis                | Years   | Engine            | Power        | Prodn |
|-------------------------|------------------------|---------|-------------------|--------------|-------|
| 230G                    | 461.210                | 1981-84 | M102.958/115.974  | 80kW         |       |
| 230G (2850WB)           | 461.211                | 1981-85 | M102.958/115.974  | 80kW         |       |
| 230GE (LWB Switzerland) | 461.217                | 1982-96 | M102.997          |              |       |
| 230GE                   | 461.218                | 1982-96 | M102.998          |              |       |
| 230GE (2850WB)          | 461.219                | 1982-96 | M102.981/998      |              |       |
| 230GE                   | 461.266                | 1985-96 | M102.996          |              |       |
| 230GE (2850WB)          | 461.267                | 1985-96 | M102.996          |              |       |
| 230GE                   | 461.238                | 1985-96 | M102.979/996      | 90kW, 188Nm  |       |
| 230GE (2850WB)          | 461.229, 239, 249      | 1991-96 | M102.979          | 90kW, 188Nm  |       |
| 230GE (3120WB)          | 461.227                | 1985-92 | M102.979/966      | 90kW, 188Nm  |       |
| 230GE (3400WB)          | 461.223                | 1991-96 | M102.979          | 90kW, 188Nm  |       |
| 280GE                   | 461.212                | 1982-86 | M110.994          | 110kW, 226Nm |       |
| 280GE (2850WB)          | 461.213                | 1982-88 | M110.994          | 110kW, 226Nm |       |
|                         |                        |         |                   |              |       |
| 240 GD                  | 461.310                | 1985-91 | OM616.338         | 53Kw         |       |
| 240 GD (2850WB)         | 461.311                | 1985-91 | OM616.338         | 53Kw         |       |
| 250GD                   | 461.317                | 1987-94 | OM 602.930        | 62Kw         |       |
| 250GD (2850WB)          | 461.318                | 1987-94 | OM 602.930        | 62Kw         |       |
| 250GD                   | 461.401                | 1987-94 | OM 602.939        | 66/69kW      |       |
| 250GD (2850WB)          | 461.402                | 1987-94 | OM 602.939        | 66/69kW      |       |
| 250GD (3120WB)          | 461.405                | 1987-94 | OM 602.939        | 66/69kW      |       |
| 250GD / 290GD           | 461.450                | 1987-94 | OM 602.938/946    |              |       |
| 250GD / 290GD (2850WB)  | 461.452, 456           | 1987-94 | OM 602.938/946    |              |       |
| 250GD / 290GD (3120WB)  | 461.458, 459           | 1987-94 | OM 602.938/946    |              |       |
| G270CDI                 | 461.345, 332, 342      | 2001-   | OM612.966         |              |       |
| G270CDI (2850WB)        | 461.302                | 2001-   | OM612.966         |              |       |
| G270CDI                 | 461.331                | 2001-   | OM612.963         |              |       |
| G280 CDI                | 461.344, 390           | 2009-   | OM642.975         | 135kW        |       |
| G280 CDI (2850WB)       | 461.304, 370           | 2009-   | OM642.975         | 135kW        |       |
| G280 CDI (3428WB)       | 461.346                | 2009-   | OM642.975         | 135kW        |       |
| G280 CDI (2850WB)       | 461.334,339,           | 2009-   | OM642.884/975     | 135kW        |       |
| 290GD (2850WB)          | 461.403, 455           | 1987-94 | OM602.946         | 70kW         |       |
| 290GD                   | 461.451                | 1991-00 | OM602.946         | 70kW         |       |
| 290GD (2850WB)          | 461.454                | 1991-00 | OM602.946         | 70kW         |       |
| 290GD                   | 461.337, 367           | 1991-00 | OM602.942/947     | 75kW, 192Nm  |       |
| 290GD (2850WB)          | 461.328, 338, 341, 368 | 1991-97 | OM602.942/947     | 75kW, 192Nm  |       |
| 290GD (3120WB)          | 461.329                | 1991-00 | OM602.942         | 75kW, 192Nm  |       |
| 290GD (3400WB)          | 461.323                | 1991-00 | OM602.942/947     | 75kW, 192Nm  |       |
| 290GDT                  | 461.335, 327, 365      | 1997-01 | OM602.983         | 88kW, 280 Nm |       |
| 290GDT (2850WB)         | 461.326, 336, 366      | 1997-01 | OM602.983         | 88kW, 280 Nm |       |
| 290GDT (3120WB)         | 461.327                | 1997-01 | OM602.983         | 88kW, 280 Nm |       |
| 290GDT (3400WB)         | 461.322, 321           | 1997-01 | OM602.983         | 88kW, 280 Nm |       |
| 300GD                   | 461.312                | 1985-91 | OM617.932         | 65kW         |       |
| 300GD (2850WB)          | 461.313                | 1985-91 | OM617.932         | 65kW         |       |
| 300GD (3120WB)          | 461.325                | 1985-91 | OM616.938/617.932 |              |       |
| 300GD (3120WB)          | 461.347, 348, 349      | 1985-91 | OM617.933         |              |       |
| G300 CDI                | 461.340, 371, 391, 392 | 2009-   | OM642.884/975     |              |       |
| G300 CDI (2850WB)       | 461.305, 330, 333, 343 | 2009-   | OM642.884/975     |              |       |

Chassis codes: the 5<sup>th</sup> digit indicates the type of body.

0 and 6 = open, pickup

1 and 5 = convertible

2 = variable

3 = station wagon

4 = variable: panel van, chassis cab, pickup

7 and 9 = chassis cab

WB = Long Wheelbase in mm (standard wheelbase is 2400 mm)